



Wyoming
Department
of Health



**PUBLIC
HEALTH
DIVISION**



**CHRONIC DISEASE &
MATERNAL CHILD
HEALTH EPIDEMIOLOGY**

Maternal Mortality in Wyoming, 2018-2023

Executive Summary

From 2018 to 2023, on average, five women died during their pregnancy or within 1 year of the end of their pregnancy per year in Wyoming. About half (46.7%, 14/30) of these deaths were determined to be pregnancy-related. Half (50.0%, 7/14) of the pregnancy-related deaths took place 43 days to 1 year after the end of the pregnancy, and over three-fourths (78.6%, 11/14) of the pregnancy-related deaths were determined to be preventable. Mental health conditions were found to be the leading causes of death for pregnancy-related deaths.

Background

In the United States, there were 676 pregnancy-related deaths in 2023 among women, meaning these women died during or within 1 year of the end of pregnancy from any cause related to or aggravated by the pregnancy. In addition, 8 in 10 of these deaths were determined to be preventable.¹ Maternal Mortality Review Committees (MMRCs) are multidisciplinary groups that meet at the local or state level and work to understand these deaths. They provide information that leads to the development of strategies with the promise to prevent pregnancy-related deaths and to help make sure that every family has the opportunity for health and well-being.

In 2019, the Utah Department of Health and the Wyoming Department of Health partnered on a successful cross-state application for Centers for Disease Control and Prevention (CDC) Enhancing Reviews and Surveillance to Eliminate Maternal Mortality (ERASE MM) funding. The funding established a cross-state MMRC in 2020. The first Wyoming maternal deaths were reviewed in 2021, starting with deaths that took place in 2018.

In 2025, the Wyoming Department of Health established an independent MMRC, which meets every two months to review maternal deaths in Wyoming. The committee reviews all pregnancy-associated deaths, regardless of the cause of death. A pregnancy-associated death is any death of a woman during her pregnancy or up to one year after the end of her pregnancy. To learn more about the WY MMRC, please visit the [WY Maternal Mortality Review Committee website](https://health.wyo.gov/publichealth/mch/womenandinfanthealth/maternal-mortality-review-committee/)*.

Due to the small number of deaths being examined, the following findings should be interpreted with caution.

*<<https://health.wyo.gov/publichealth/mch/womenandinfanthealth/maternal-mortality-review-committee/>>



Deaths per Year

5

Pregnancy-associated
deaths per year

In Wyoming, from 2018 to 2023, an average of 5 pregnancy-associated deaths took place each year.

Role of the WY MMRC

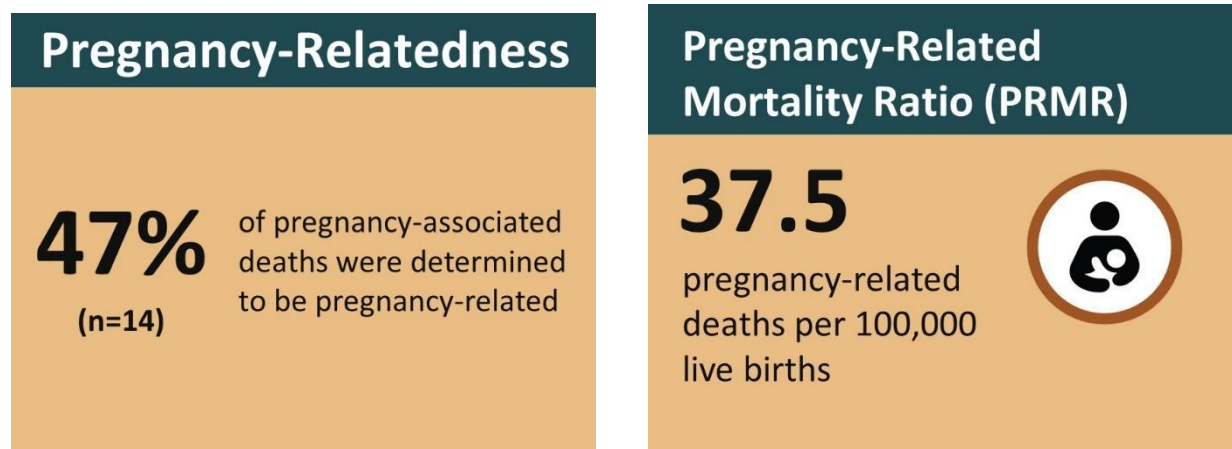
The committee makes and documents the following key decisions:

- Was the death pregnancy-related? i.e., “If this woman had not been pregnant, would she have died?”
- What was the underlying cause of death?
- Was the death preventable? And if so, what was the chance to alter the outcome? A death is considered preventable if the committee determines that there was at least some chance of the death being averted by one or more reasonable changes to patient, family, community, provider, facility, and/or systems factors.
- What were the factors that contributed to the death?
- If there was at least some chance that the death could have been averted, what were the specific and feasible actions that, if implemented or altered, might have changed the course of events?

Data presented in this factsheet examines pregnancy-associated deaths among Wyoming residents that occurred in 2018-2023 and were determined to be pregnancy-related by the committee.



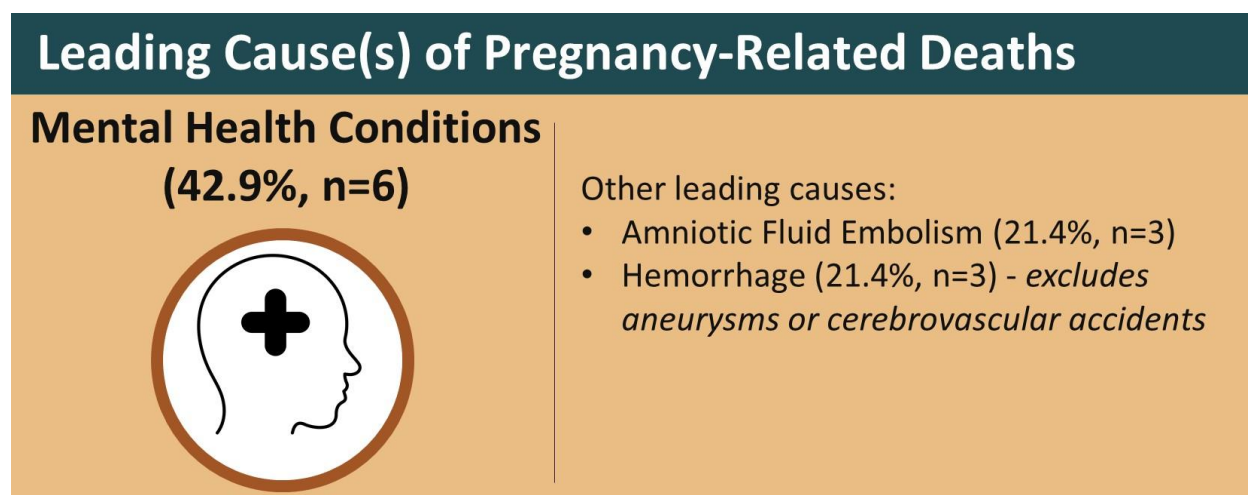
Pregnancy-Related Mortality in Wyoming



In Wyoming, from 2018 to 2023, 47% (14/30) of pregnancy-associated deaths were determined to be pregnancy-related, an average of 2 pregnancy-related deaths a year.

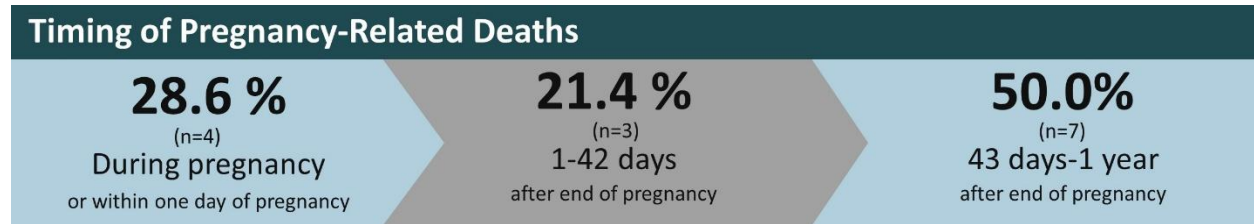
The 2018-2023 Wyoming pregnancy-related mortality ratio was 37.5 pregnancy-related deaths per 100,000 live births. For comparison, the 2023 US pregnancy-related mortality ratio was 18.7 pregnancy-related deaths per 100,000 live births.¹ It should be noted that the Wyoming rate is based on counts less than 20 and should be interpreted with caution.

Leading Causes of Death



Mental health conditions were found to be the leading causes of death among pregnancy-related deaths (6/14) in Wyoming from 2018 to 2023.

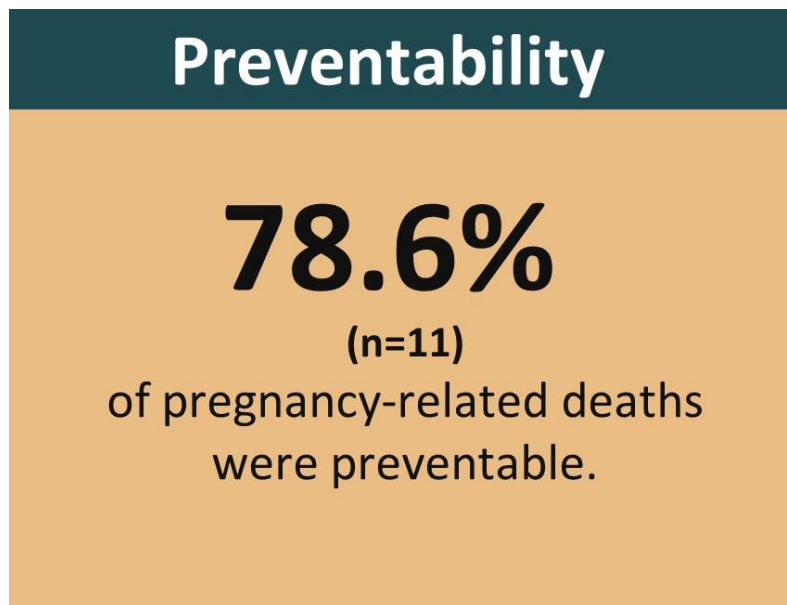
Timing of Deaths



Half of all pregnancy-related deaths in Wyoming from 2018 to 2023 (7/14) took place 43 days to 1 year after the end of pregnancy. Over a quarter (28.6%, 4/14) took place during pregnancy (including the day of delivery), and about one-fifth (21.4%, 3/14) took place 1-42 days after the end of the pregnancy.

Preventability

A death is determined to be **preventable** if there was at least some chance it could have been avoided with reasonable changes to patient, family, provider, facility, system, and/or community factors.

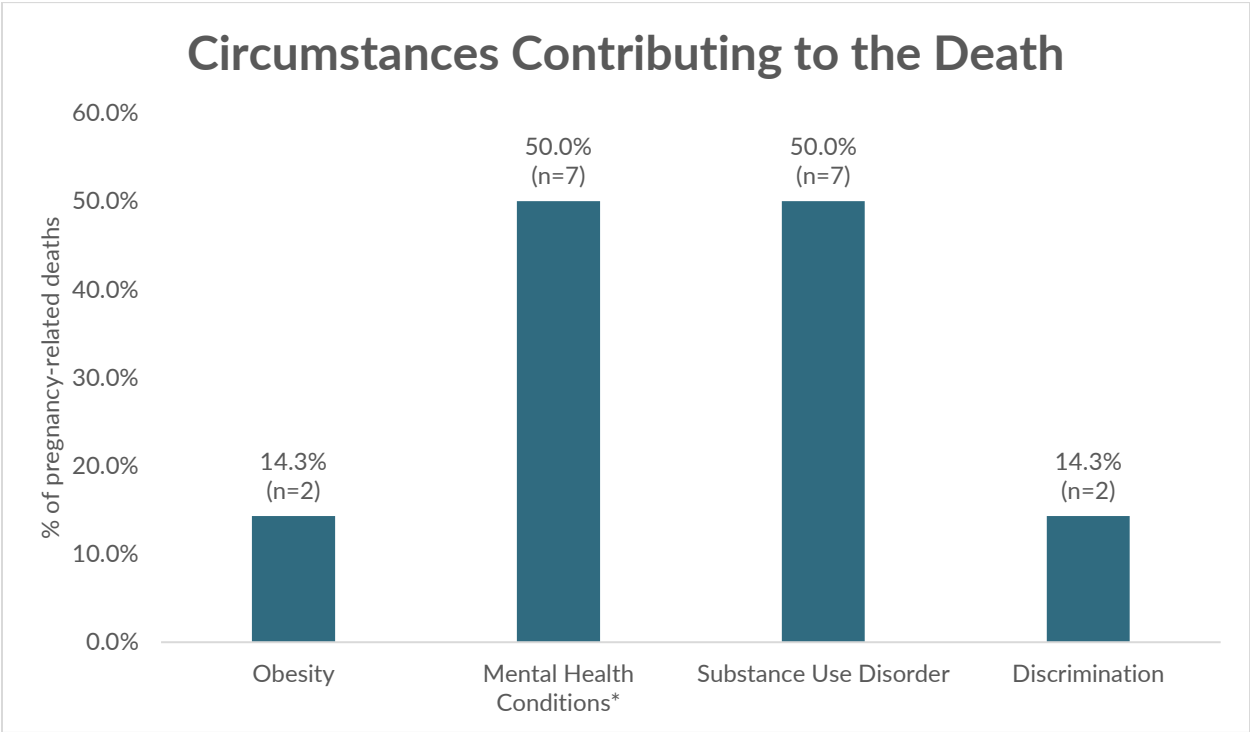


Over three-fourths (78.6%, 11/14) of the pregnancy-related deaths in Wyoming from 2018 to 2023 were determined to be preventable by the committee. It was determined that for two-thirds (63.6%, 7/11) of these preventable deaths, there was a good chance that the death could have been avoided with reasonable changes to patient, family, provider, facility, system, and/or community factors. For one-third (36.4%, 4/11), it was determined that there was some chance that the death could have been avoided with reasonable changes.



Circumstances Contributing to the Death

The MMRC makes a determination about whether four specific circumstances surrounding the death (obesity, discrimination, mental health, and substance use) contributed to the death. Multiple circumstances could contribute to a death. The graph below displays the percentage of pregnancy-related deaths for which the committee selected “Yes” or “Probably” that a circumstance contributed to a death.



*other than substance use disorder

The WY MMRC determined that both mental health conditions (other than substance use disorders) and substance use disorders contributed to half of all the pregnancy-related deaths from 2018 to 2023.

References

1. U.S. Centers for Disease Control and Prevention (CDC), National Center for Chronic Disease Prevention and Health Promotion (NCCDPHP); Division of Reproductive Health. January 30, 2025. *Data from the Pregnancy Mortality Surveillance System*. [Accessed 2025, October] <<https://www.cdc.gov/maternal-mortality/php/pregnancy-mortality-surveillance-data/index.html>>

