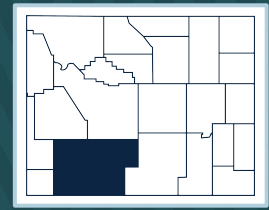




SWEETWATER COUNTY

2022 Wyoming Immunization Report Card



	County (W _Y IR)	Wyoming (W _Y IR)	County Ranking
Children (19-35 months)			
4:3:1:3:3:1:4 ¹	67%	62%	8
4 DTaP	69%	65%	10
3 Polio	89%	80%	4
1 MMR	84%	77%	5
3 Hib	87%	78%	4
3 Hep B	90%	81%	2
1 Varicella	84%	76%	5
4 PCV	78%	72%	9
2 Hep A	53%	44%	5
2 Rotavirus	90%	82%	4
Kindergarteners			
5 DTaP	96%	89%	2
2 MMR	96%	91%	2
2 Varicella	96%	90%	2
4 Polio	96%	90%	2
Adolescents			
1 MenACWY (13-17 years)	56%	60%	16
2 MenACWY (16-18 years)	17%	19%	16
2 HPV (13-17 years)	36%	36%	12
1 Tdap (13-17 years)	71%	79%	22
Adults (≥65 years)			
1 PPSV23	41%	48%	16
Zoster	25%	28%	15

Footnotes

Immunization coverage rates are obtained from the Wyoming Immunization Registry (WYIR), except for Kindergarten, which is obtained from the 2022 Immunization Status Report.

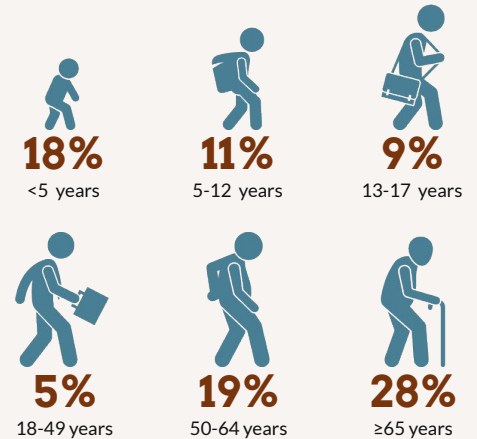
- 4:3:1:3:3:1:4 refers to 4 DTaP, 3 Polio, 1 MMR, 3 Hib, 3 HepB, 1 Varicella, 4 PCV.
- Program acronyms: Vaccines for Children (VFC), Wyoming Vaccinates Important People (WyVIP), and Adult Hepatitis Vaccine (AHV).
- Flu coverage is for the 2021-2022 season from the WYIR.
- Data based on the number of waivers approved in 2022 as recorded in the Immunization Waiver Database.

For more information on WYIR and Immunization Status Report data, reference the Immunization Data-Technical Notes found at health.wyo.gov/immunization.

Sweetwater County Immunization Sites

- 25** Facilities enrolled with the WYIR
- 7** Healthcare providers enrolled in VFC and WyVIP programs²
- 1** Healthcare providers are enrolled in the AHV program²

Sweetwater County Flu Vaccine Coverage³



Immunization Waivers⁴

	COUNTY	STATE
Children <5 years	19	321
Children ≥5 years	46	793
Religious	65	1096
Medical	0	18

