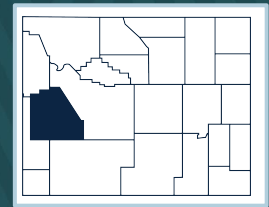




# SUBLETTE COUNTY

## 2022 Wyoming Immunization Report Card



	County (W <sub>Y</sub> IR)	Wyoming (W <sub>Y</sub> IR)	County Ranking
<b>Children (19-35 months)</b>			
4:3:1:3:3:1:4 <sup>1</sup>	53%	62%	18
4 DTaP	55%	65%	18
3 Polio	66%	80%	21
1 MMR	63%	77%	20
3 Hib	66%	78%	21
3 Hep B	67%	81%	20
1 Varicella	62%	76%	20
4 PCV	60%	72%	18
2 Hep A	22%	44%	21
2 Rotavirus	65%	82%	22
<b>Kindergarteners</b>			
5 DTaP	91%	89%	12
2 MMR	92%	91%	12
2 Varicella	91%	90%	12
4 Polio	92%	90%	11
<b>Adolescents</b>			
1 MenACWY (13-17 years)	66%	60%	10
2 MenACWY (16-18 years)	31%	19%	5
2 HPV (13-17 years)	24%	36%	21
1 Tdap (13-17 years)	74%	79%	19
<b>Adults (≥65 years)</b>			
1 PPSV23	35%	48%	20
Zoster	24%	28%	17

### Footnotes

Immunization coverage rates are obtained from the Wyoming Immunization Registry (WYIR), except for Kindergarten, which is obtained from the 2022 Immunization Status Report.

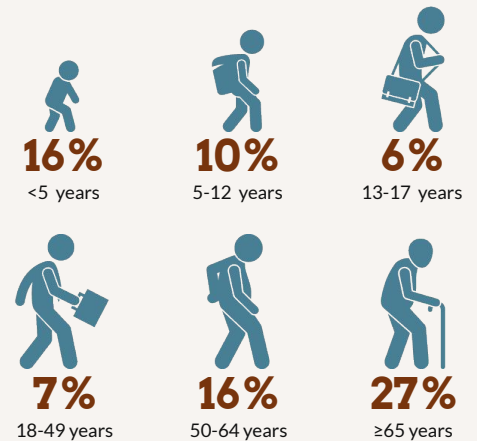
- 4:3:1:3:3:1:4 refers to 4 DTaP, 3 Polio, 1 MMR, 3 Hib, 3 HepB, 1 Varicella, 4 PCV.
- Program acronyms: Vaccines for Children (VFC), Wyoming Vaccinates Important People (WyVIP), and Adult Hepatitis Vaccine (AHV).
- Flu coverage is for the 2021-2022 season from the WYIR.
- Data based on the number of waivers approved in 2022 as recorded in the Immunization Waiver Database.

For more information on WYIR and Immunization Status Report data, reference the Immunization Data-Technical Notes found at [health.wyo.gov/immunization](http://health.wyo.gov/immunization).

### Sublette County Immunization Sites

- 3** Facilities enrolled with the WYIR
- 1** Healthcare providers enrolled in VFC and WyVIP programs<sup>2</sup>
- 1** Healthcare providers are enrolled in the AHV program<sup>2</sup>

### Sublette County Flu Vaccine Coverage<sup>3</sup>



### Immunization Waivers<sup>4</sup>

	COUNTY	STATE
Children <5 years	<b>6</b>	<b>321</b>
Children ≥5 years	<b>22</b>	<b>793</b>
Religious	<b>28</b>	<b>1096</b>
Medical	<b>0</b>	<b>18</b>