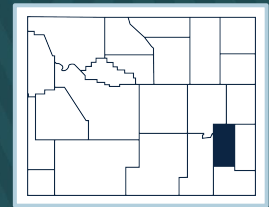




PLATTE COUNTY

2022 Wyoming Immunization Report Card



	County (W _Y IR)	Wyoming (W _Y IR)	County Ranking
Children (19-35 months)			
4:3:1:3:3:1:4 ¹	53%	62%	17
4 DTaP	55%	65%	17
3 Polio	81%	80%	11
1 MMR	79%	77%	11
3 Hib	75%	78%	16
3 Hep B	82%	81%	12
1 Varicella	79%	76%	11
4 PCV	71%	72%	13
2 Hep A	51%	44%	8
2 Rotavirus	76%	82%	16
Kindergarteners			
5 DTaP	78%	89%	20
2 MMR	80%	91%	21
2 Varicella	78%	90%	20
4 Polio	78%	90%	20
Adolescents			
1 MenACWY (13-17 years)	79%	60%	1
2 MenACWY (16-18 years)	34%	19%	3
2 HPV (13-17 years)	59%	36%	1
1 Tdap (13-17 years)	92%	79%	1
Adults (≥65 years)			
1 PPSV23	40%	48%	17
Zoster	30%	28%	8

Footnotes

Immunization coverage rates are obtained from the Wyoming Immunization Registry (WYIR), except for Kindergarten, which is obtained from the 2022 Immunization Status Report.

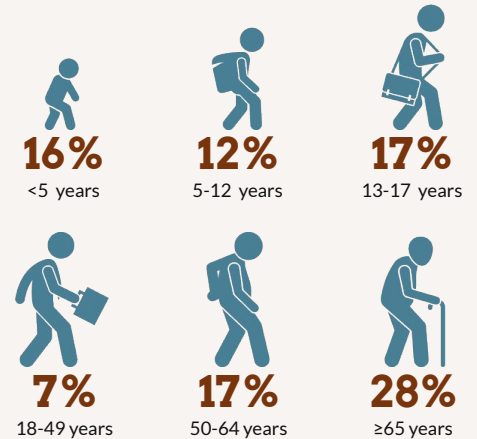
- 4:3:1:3:3:1:4 refers to 4 DTaP, 3 Polio, 1 MMR, 3 Hib, 3 HepB, 1 Varicella, 4 PCV.
- Program acronyms: Vaccines for Children (VFC), Wyoming Vaccinates Important People (WyVIP), and Adult Hepatitis Vaccine (AHV).
- Flu coverage is for the 2021-2022 season from the WYIR.
- Data based on the number of waivers approved in 2022 as recorded in the Immunization Waiver Database.

For more information on WYIR and Immunization Status Report data, reference the Immunization Data-Technical Notes found at health.wyo.gov/immunization.

Platte County Immunization Sites

- 7** Facilities enrolled with the WYIR
- 2** Healthcare providers enrolled in VFC and WyVIP programs²
- 1** Healthcare providers are enrolled in the AHV program²

Platte County Flu Vaccine Coverage³



Immunization Waivers⁴

	COUNTY	STATE
Children <5 years	12	321
Children ≥5 years	27	793
Religious	39	1096
Medical	0	18

