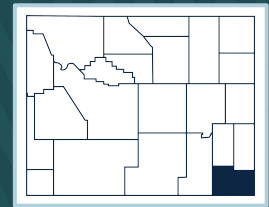




LARAMIE COUNTY

2022 Wyoming Immunization Report Card



	County (W _Y IR)	Wyoming (W _Y IR)	County Ranking
Children (19-35 months)			
4:3:1:3:3:1:4 ¹	60%	62%	12
4 DTaP	63%	65%	13
3 Polio	75%	80%	17
1 MMR	75%	77%	14
3 Hib	72%	78%	17
3 Hep B	79%	81%	15
1 Varicella	75%	76%	12
4 PCV	67%	72%	16
2 Hep A	52%	44%	7
2 Rotavirus	82%	82%	13
Kindergarteners			
5 DTaP	84%	89%	19
2 MMR	86%	91%	20
2 Varicella	84%	90%	19
4 Polio	85%	90%	19
Adolescents			
1 MenACWY (13-17 years)	49%	60%	21
2 MenACWY (16-18 years)	11%	19%	19
2 HPV (13-17 years)	29%	36%	18
1 Tdap (13-17 years)	64%	79%	23
Adults (≥65 years)			
1 PPSV23	51%	48%	9
Zoster	29%	28%	9

Footnotes

Immunization coverage rates are obtained from the Wyoming Immunization Registry (WYIR), except for Kindergarten, which is obtained from the 2022 Immunization Status Report.

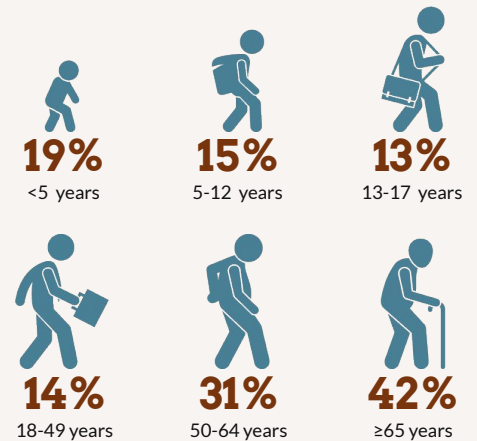
- 4:3:1:3:3:1:4 refers to 4 DTaP, 3 Polio, 1 MMR, 3 Hib, 3 HepB, 1 Varicella, 4 PCV.
- Program acronyms: Vaccines for Children (VFC), Wyoming Vaccinates Important People (WyVIP), and Adult Hepatitis Vaccine (AHV).
- Flu coverage is for the 2021-2022 season from the WYIR.
- Data based on the number of waivers approved in 2022 as recorded in the Immunization Waiver Database.

For more information on WYIR and Immunization Status Report data, reference the Immunization Data-Technical Notes found at health.wyo.gov/immunization.

Laramie County Immunization Sites

- 31** Facilities enrolled with the WYIR
- 11** Healthcare providers enrolled in VFC and WyVIP programs²
- 1** Healthcare providers are enrolled in the AHV program²

Laramie County Flu Vaccine Coverage³



Immunization Waivers⁴

	COUNTY	STATE
Children <5 years	39	321
Children ≥5 years	101	793
Religious	137	1096
Medical	3	18

