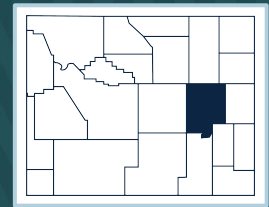




# CONVERSE COUNTY

## 2022 Wyoming Immunization Report Card



	County (W <sub>Y</sub> IR)	Wyoming (W <sub>Y</sub> IR)	County Ranking
<b>Children (19-35 months)</b>			
4:3:1:3:3:1:4 <sup>1</sup>	60%	62%	11
4 DTaP	69%	65%	9
3 Polio	79%	80%	15
1 MMR	76%	77%	13
3 Hib	82%	78%	9
3 Hep B	74%	81%	17
1 Varicella	74%	76%	13
4 PCV	73%	72%	11
2 Hep A	45%	44%	12
2 Rotavirus	84%	82%	8
<b>Kindergarteners</b>			
5 DTaP	92%	89%	9
2 MMR	93%	91%	9
2 Varicella	93%	90%	7
4 Polio	92%	90%	9
<b>Adolescents</b>			
1 MenACWY (13-17 years)	75%	60%	2
2 MenACWY (16-18 years)	29%	19%	8
2 HPV (13-17 years)	53%	36%	3
1 Tdap (13-17 years)	87%	79%	4
<b>Adults (≥65 years)</b>			
1 PPSV23	51%	48%	7
Zoster	28%	28%	12

### Footnotes

Immunization coverage rates are obtained from the Wyoming Immunization Registry (WYIR), except for Kindergarten, which is obtained from the 2022 Immunization Status Report.

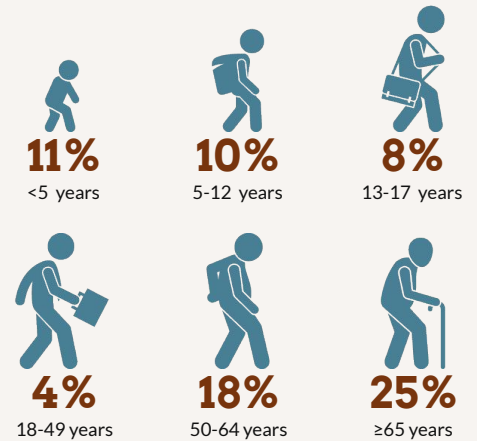
- 4:3:1:3:3:1:4 refers to 4 DTaP, 3 Polio, 1 MMR, 3 Hib, 3 HepB, 1 Varicella, 4 PCV.
- Program acronyms: Vaccines for Children (VFC), Wyoming Vaccinates Important People (WyVIP), and Adult Hepatitis Vaccine (AHV).
- Flu coverage is for the 2021-2022 season from the WYIR.
- Data based on the number of waivers approved in 2022 as recorded in the Immunization Waiver Database.

For more information on WYIR and Immunization Status Report data, reference the Immunization Data-Technical Notes found at [health.wyo.gov/immunization](http://health.wyo.gov/immunization).

### Converse County Immunization Sites

- 7** Facilities enrolled with the WYIR
- 4** Healthcare providers enrolled in VFC and WyVIP programs<sup>2</sup>
- 2** Healthcare providers are enrolled in the AHV program<sup>2</sup>

### Converse County Flu Vaccine Coverage<sup>3</sup>



### Immunization Waivers<sup>4</sup>

	COUNTY	STATE
Children <5 years	<b>5</b>	<b>321</b>
Children ≥5 years	<b>21</b>	<b>793</b>
Religious	<b>25</b>	<b>1096</b>
Medical	<b>1</b>	<b>18</b>

