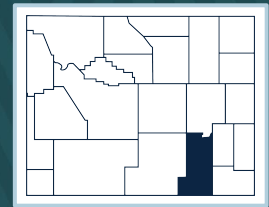




# ALBANY COUNTY

## 2022 Wyoming Immunization Report Card



	County (W <sub>Y</sub> IR)	Wyoming (W <sub>Y</sub> IR)	County Ranking
<b>Children (19-35 months)</b>			
4:3:1:3:3:1:4 <sup>1</sup>	59%	62%	14
4 DTaP	62%	65%	14
3 Polio	79%	80%	14
1 MMR	73%	77%	16
3 Hib	78%	78%	15
3 Hep B	81%	81%	13
1 Varicella	72%	76%	17
4 PCV	69%	72%	14
2 Hep A	53%	44%	4
2 Rotavirus	82%	82%	12
<b>Kindergarteners</b>			
5 DTaP	94%	89%	4
2 MMR	94%	91%	5
2 Varicella	93%	90%	6
4 Polio	94%	90%	5
<b>Adolescents</b>			
1 MenACWY (13-17 years)	74%	60%	3
2 MenACWY (16-18 years)	30%	19%	6
2 HPV (13-17 years)	56%	36%	2
1 Tdap (13-17 years)	79%	79%	12
<b>Adults (≥65 years)</b>			
1 PPSV23	57%	48%	1
Zoster	39%	28%	2

### Footnotes

Immunization coverage rates are obtained from the Wyoming Immunization Registry (WYIR), except for Kindergarten, which is obtained from the 2022 Immunization Status Report.

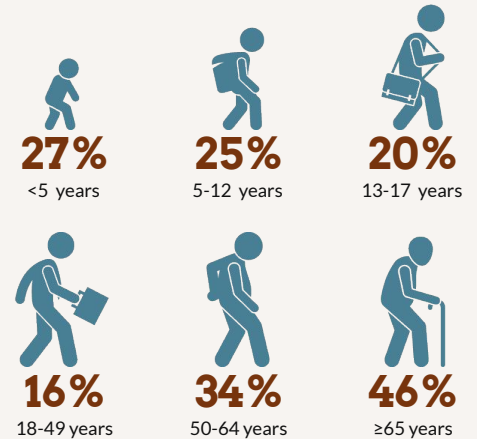
- 4:3:1:3:3:1:4 refers to 4 DTaP, 3 Polio, 1 MMR, 3 Hib, 3 HepB, 1 Varicella, 4 PCV.
- Program acronyms: Vaccines for Children (VFC), Wyoming Vaccinates Important People (WyVIP), and Adult Hepatitis Vaccine (AHV).
- Flu coverage is for the 2021-2022 season from the WYIR.
- Data based on the number of waivers approved in 2022 as recorded in the Immunization Waiver Database.

For more information on WYIR and Immunization Status Report data, reference the Immunization Data-Technical Notes found at [health.wyo.gov/immunization](http://health.wyo.gov/immunization).

### Albany County Immunization Sites

- 19** Facilities enrolled with the WYIR
- 7** Healthcare providers enrolled in VFC and WyVIP programs<sup>2</sup>
- 1** Healthcare providers are enrolled in the AHV program<sup>2</sup>

### Albany County Flu Vaccine Coverage<sup>3</sup>



### Immunization Waivers<sup>4</sup>

	COUNTY	STATE
Children <5 years	<b>14</b>	<b>321</b>
Children ≥5 years	<b>33</b>	<b>793</b>
Religious	<b>46</b>	<b>1096</b>
Medical	<b>1</b>	<b>18</b>

