

WYOMING FRONTIER

INFORMATION



WYO MEDICAID
DIVISION OF
HEALTHCARE FINANCING

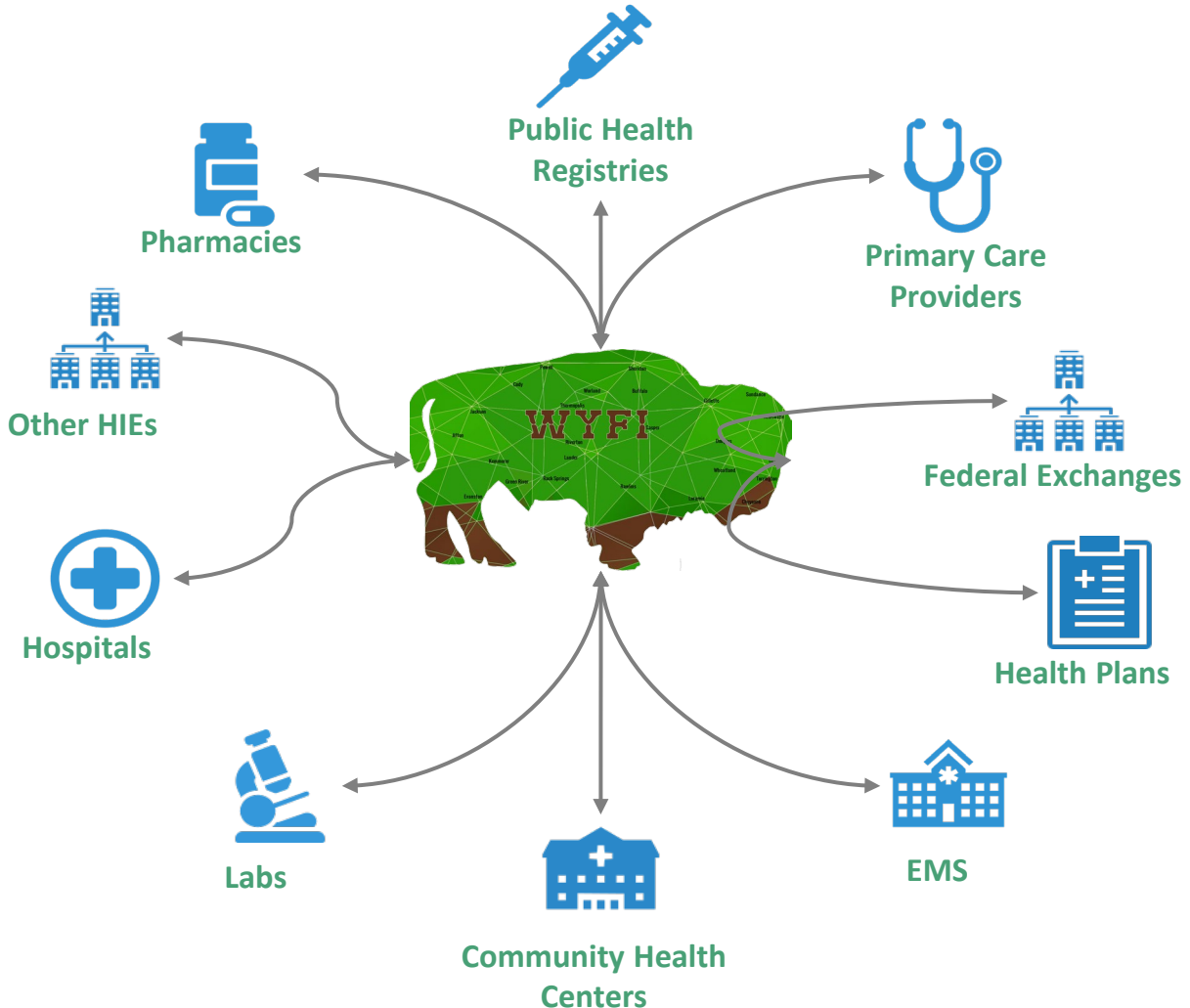
It's Not Just About the Data

The mission of WYFI is to promote a healthier Wyoming by developing a secure, connected, and coordinated statewide health IT system that supports effective and efficient healthcare. Our primary goal is to share patient healthcare information in a secure environment to improve patient care and to reduce system inefficiencies.

We believe WYFI is an influential tool that will improve the efficiency of healthcare information among healthcare facilities across the state. The electronic reorganization of information will lead to improved coverage and management in our facilities, resulting in better care for our neighbors, friends and residents across Wyoming.

Overview of the WYFI Solution

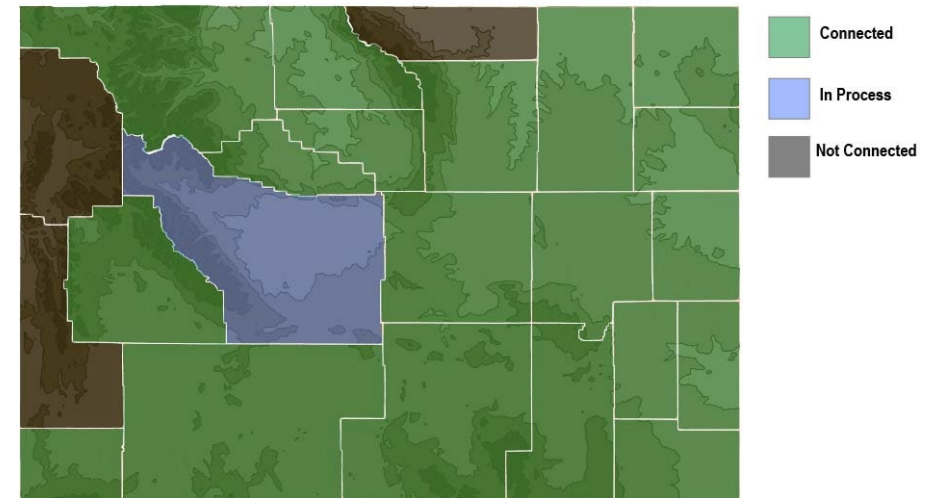
Patient Records
being shared



Hospital Data Contributors

- Aspen Mountain Medical Center
- Campbell County Memorial Hospital
- Cheyenne Regional Medical Center
- Cody Regional Health
- Crook County Medical Services District
- Evanston Regional Hospital
- Hot Springs County Memorial Hospital
- Ivinson Memorial Hospital
- Johnson County Healthcare
- Memorial Hospital of Carbon County
- Memorial Hospital of Converse County
- Memorial Hospital of Sweetwater County
- Niobrara Community Hospital
- North Big Horn Hospital
- North Platte Valley Medical Center
- Platte County Memorial Hospital
- Powell Valley Healthcare
- Star Valley Medical Center
- Summit Medical Center
- Three Rivers Health
- Torrington Community Hospital
- Washakie Medical Center
- Weston County Health Services
- Wyoming Medical Center

WYFI Hospital Connections by County



Quick WYFI Facts

637,505

WY Covered Lives

10,483,177

Patient Encounters

269

Data Contributors

1,653

CHR Users

1,284,469

ADTs Received last Month

157,546

Charts Accessed Last Month

Vaccine Status

- **Organizations**

- Primary Care Provider (PCP)

- **Goals**

- The PCP is treating a patient that doesn't have their vaccination records.
 - PCP accesses vaccination records in the HIE to ensure the patient is up to date.
 - Vaccinations are administered for patients if needed.
 - Recommendations can be made for elderly patients that may be missing vaccinations
 - Increases capacity to prevent vaccine-preventable diseases
 - Expedited monitoring of any potential side-effects.



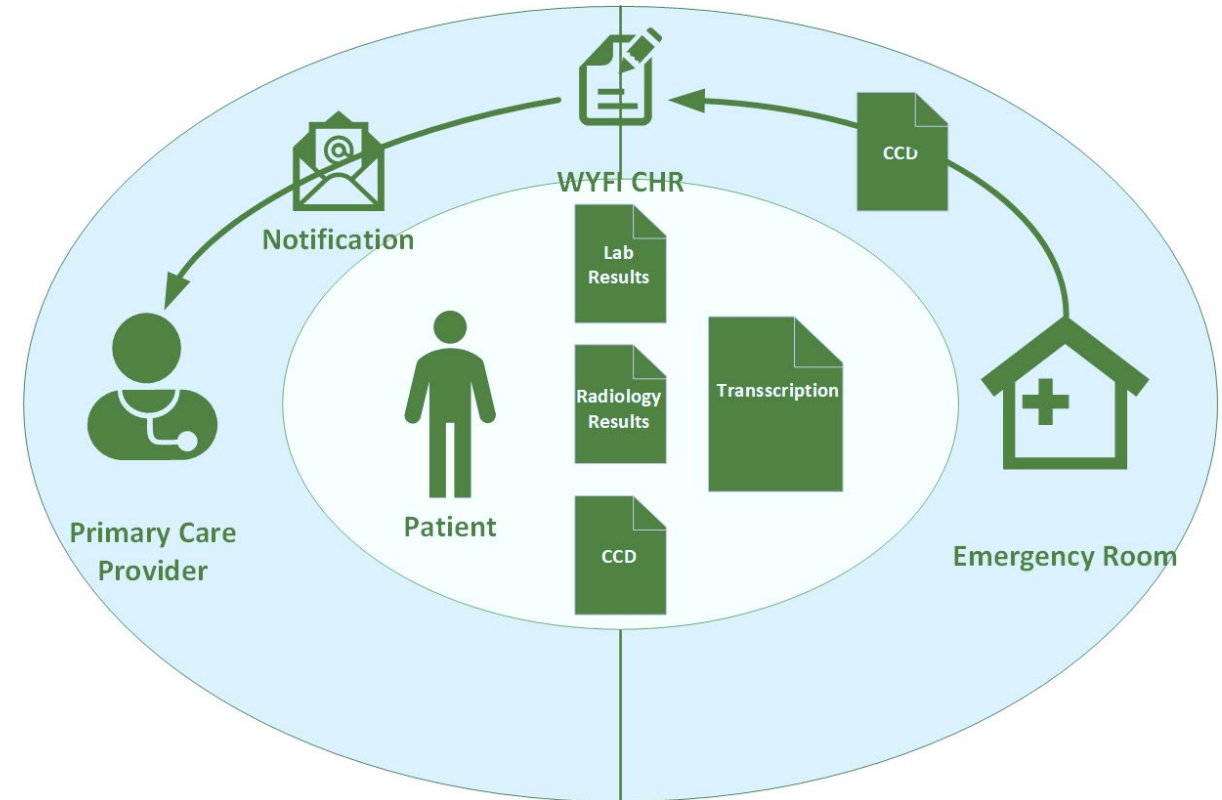
Care Coordination

- **Organization**

Emergency Departments & Primary Care Provider (PCP)

- **Goals**

- CHR access allows for immediate and expanded access to community clinical data to assist with accurately capturing medical history information
- Timely intervention and medical decision making
- Reduced phone calls and faxing
- Improved patient safety
- The PCP receives notification of inpatient admittance to emergency department.
- PCP schedules a follow-up appointment for aftercare upon discharge to manage care and prevent readmission.
- Patient admittance, labs, and radiology are all available for PCP to review prior to the scheduled after care visit.



Demonstration: Community Health Record

WYFI Community Health Record Wyoming Frontier Information



- **Community Health Record (CHR) provides fast, simple access to longitudinal patient records across the community**
- **Improves care coordination by delivering key details necessary for care transitions all in one place**
- **Encounter information is incorporated across the community; hospitals, labs, PCPs, specialists, LTC, and other care settings**

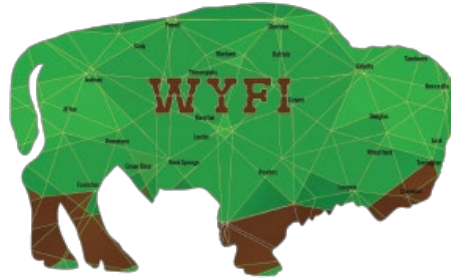


WYFI Notify

Notify makes it simple by alerting providers when patients are involved in a care event, such as a hospital admission, discharge or transfer, enabling proactive responses that support improved outcomes.

- Patient registry based subscriptions
- Alert notification customization
- Link to patient records within the notification

The screenshot shows the 'NOTIFY' application interface. At the top, there is a navigation bar with 'NOTIFY' on the left, 'Help' and 'VITLAdmin' on the right, and 'User Notifications', 'User Subscriptions', and 'Admin' in the center. Below this is a breadcrumb trail: 'Notify Home > User Subscriptions > New Subscription'. The main content area is titled 'New Subscription' and features a five-step progress indicator: 1. What to be notified on (active), 2. Where to receive from, 3. Where/when to send to, 4. Criteria, and 5. Summary. Under the 'What to be notified on' step, there is a section for 'Notifiable Events' with the instruction 'Select the events you would like to be notified about.' Below this are four checkboxes: 'Inpatient Discharge Event' (unchecked), 'Emergency Discharge Event' (checked), 'Emergency Admit Event' (checked), and 'Inpatient Admit Event' (unchecked). A legend indicates '* = required fields'. At the bottom of the form are 'Previous', 'Next', and 'Save' buttons. The footer of the application reads 'Notify Version: 1.2.0.253 - Powered by Medicity'.



WYOMING FRONTIER INFORMATION

Thank you!

Please contact the WYFI team with any questions at wdh-wyfi-hie@wyo.gov

Or visit our website at <https://wyfi.solutions/>

