



INFLUENZA REPORT

2023-2024 Influenza Season

MMWR Week 52 (12/24/23-12/30/23)

Weekly Report of Influenza and Influenza-like Illness (ILI) Activity



Influenza and Influenza-like Illness Activity

Spread

Regional
Transmission continues to increase across the state

Flu Activity

Very High
Activity levels continue to increase

ILI Activity

Very High
Increasing reports of outpatient respiratory illnesses

Co-circulating

Other Viruses:
SARS-CoV-2
RSV

Seasonal Data

Types of Flu
Influenza A and B viruses are circulating

Subtypes

Primary: A/H1N1
Predominately H1N1 viruses reported across the country this week

Outbreaks

0
No new LTCF or school associated outbreaks reported this week

Severity

Inpatients
The number of hospital admissions continues to increase across the country

Deaths

0
No locally reported pediatric deaths; 27 pediatric deaths reported in the US so far this season

Syndromic

4
Syndromic anomalies reported this week

EMS

53
Suspected ILI reports this week

Hot Spots

Tracking Trends
Significant increase in case counts within Campbell and Park counties



Geographic Activity by Regions

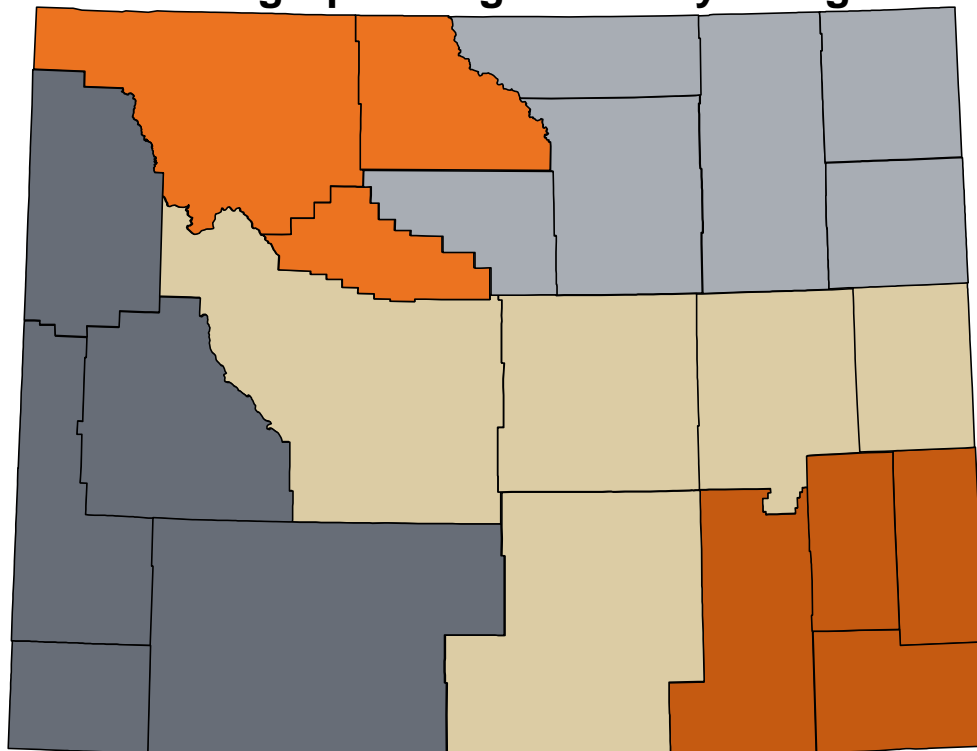
Wyoming as a whole had **very high** activity this week (MMWR Week 52). Transmission levels continue to increase across the state.

Healthcare providers in **19** counties reported ILI activity.

The electronically reported influenza cases represent **all five** Infectious Disease Epidemiology (IDE) Geographic Regions.

Healthcare providers across the state electronically reported **406 cases** of influenza (rapid influenza diagnostic tests and PCR confirmed tests) this week.

IDE Geographic Regions of Wyoming



- Southeastern (**widespread**, with cases reported in every county)
- Central (**regional**, with cases reported in Carbon, Fremont and Natrona counties)
- Western (**regional**, with cases reported in every county besides Lincoln)
- Big Horn (**regional**, with cases reported in Big Horn and Park counties)
- Northeastern (**widespread**, with cases reported in every county)



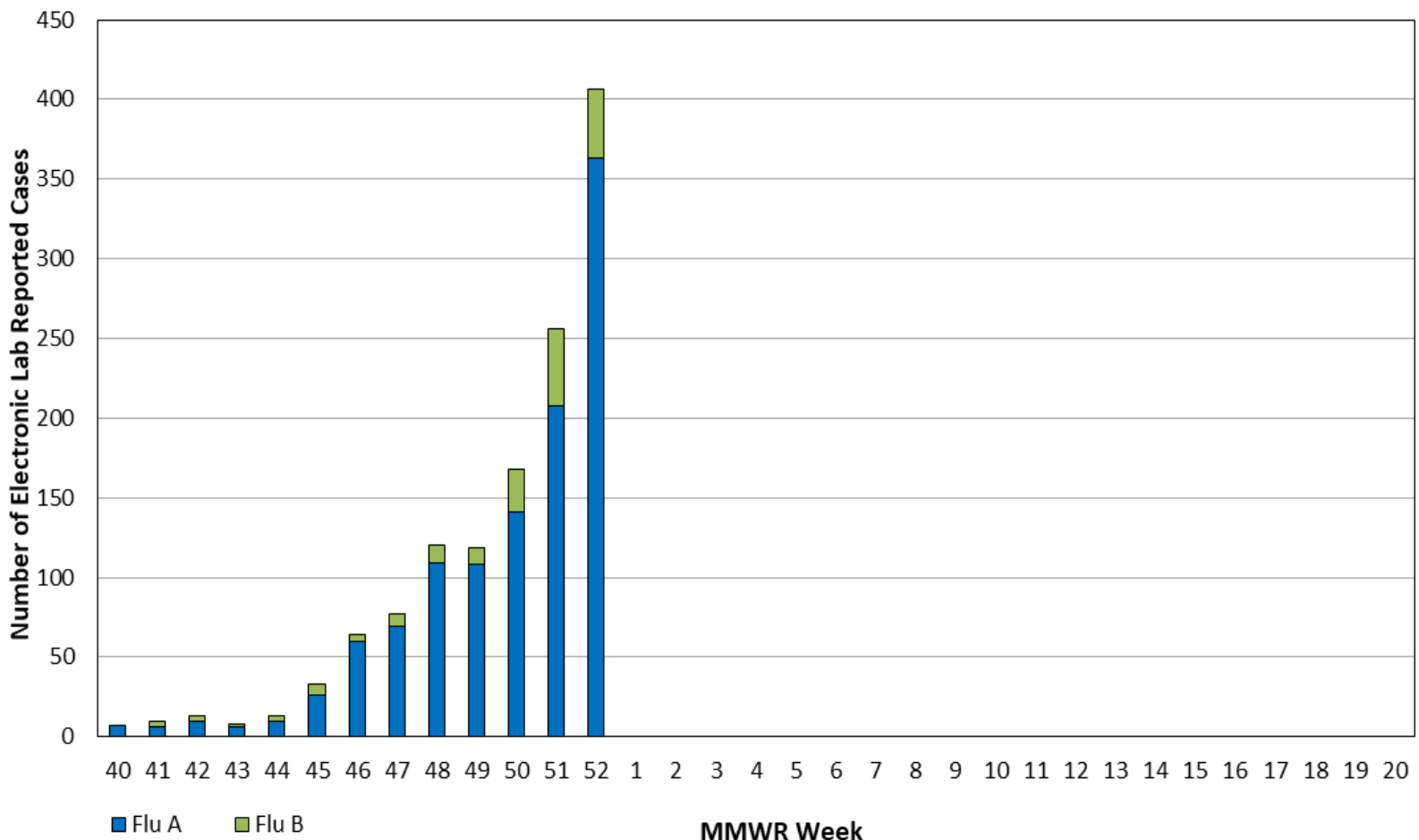
Public Health Laboratory

The overall volume of samples tested for influenza at the Wyoming Public Health Laboratory has increased since the introduction of the CDC Influenza SARS-CoV-2 Multiplex Assay. Wyoming saw another **substantial increase** in the number of positive influenza specimens reported this week compared to the past few weeks of the 2023-2024 season.

Healthcare and Clinical Laboratories

Clinical laboratories most frequently reported **influenza A/H1N1 viruses** during MMWR Week 52, with some influenza A/H3N2 and B viruses.

Electronic Lab Reports of Influenza Cases



* This graph is not representative of all influenza cases across the state



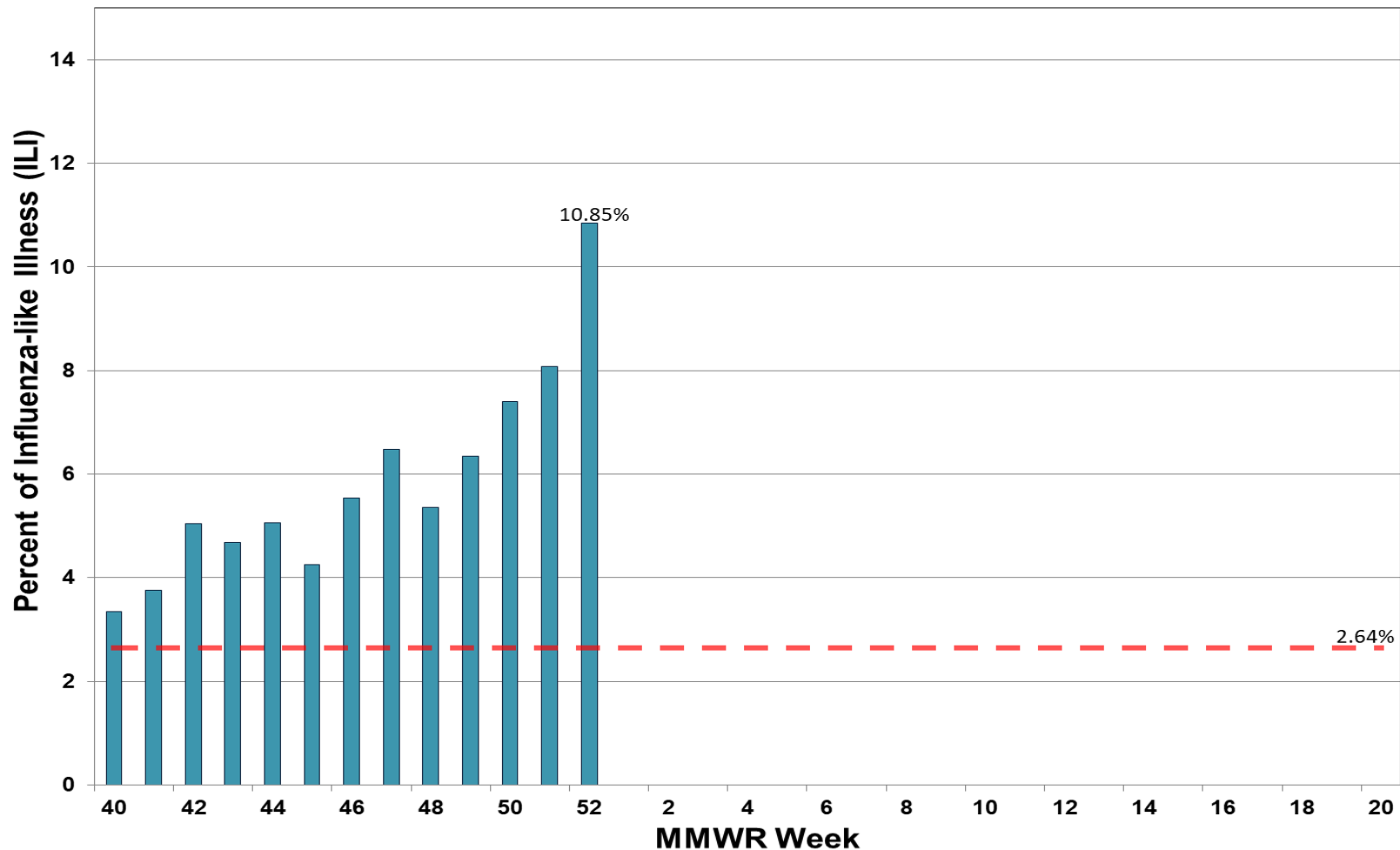
ILINet Providers

The percent of patient visits to ILINet Sentinel Providers for an influenza-like illness was **10.85%**, which is **above** Wyoming's baseline (**2.64%**), and a **significant increase** from week 51.

The Wyoming Department of Health received reports from **less than 50%** of the ILINet providers across the state. Therefore, weekly percentages could change as additional values are submitted.

Key Updates: Outpatient respiratory illness has been above baseline nationally since November and is above baseline in all 10 HHS Regions. Based on CDC calculations, transmission within Wyoming was **very high** this week. Seasonal influenza activity is elevated and continues to increase in most parts of the country.

Weekly Percent of ILI Visits





Mortality Data

Tracking death certificates is the best surveillance system to capture and identify pneumonia and influenza-associated deaths in Wyoming. According to the CDC, influenza is infrequently listed on death certificates. Also, testing for seasonal influenza infections is not frequently performed, particularly among the elderly, who are at greatest risk for seasonal influenza complications and death. Therefore, public health officials may not identify influenza-associated deaths in many instances; consequently, this surveillance system may underestimate the true impact of influenza-associated deaths across the state.

There have been **15** pneumonia and influenza (P&I) mortality reports certified since the beginning of the 2023-2024 Influenza Season.

Monthly P&I Mortality Reports (2019-2024)

