



INFLUENZA REPORT

2022-2023 Influenza Season

MMWR Week 52 (12/25-12/31)

Weekly Report of Influenza and Influenza-like Illness (ILI) Activity



Influenza and Influenza-like Illness Activity

Spread

Regional/Local

Transmission has stabilized in most counties, while others have seen a slight increase

Flu Activity

Moderate

Activity remains elevated, although many counties have stabilized

ILI Activity

Moderate

Reports of outpatient respiratory illnesses have stabilized

Co-circulating

Other Viruses

SARS-CoV-2
RSV

Seasonal Data

Types of Flu

Influenza A and B viruses are circulating

Subtypes

Primary: A/H3

Predominately H3N2 viruses reported across the country

Outbreaks

0

No school associated or LTCF outbreaks reported

Severity

Inpatients

Continued reports of hospitalizations across the country with highest rates in those 65+

Deaths

0

No locally reported pediatric deaths; 74 total pediatric deaths across the country this season

Syndromic

1

Syndromic anomalously reported

EMS

34

Suspected ILI reports this week

Hot Spots

Tracking Trends

localized hot spots

Geographic Spread



Geographic Activity by Regions

Wyoming as a whole continues to have **regional activity** this week (MMWR Week 52) with several counties reporting **local activity** levels.

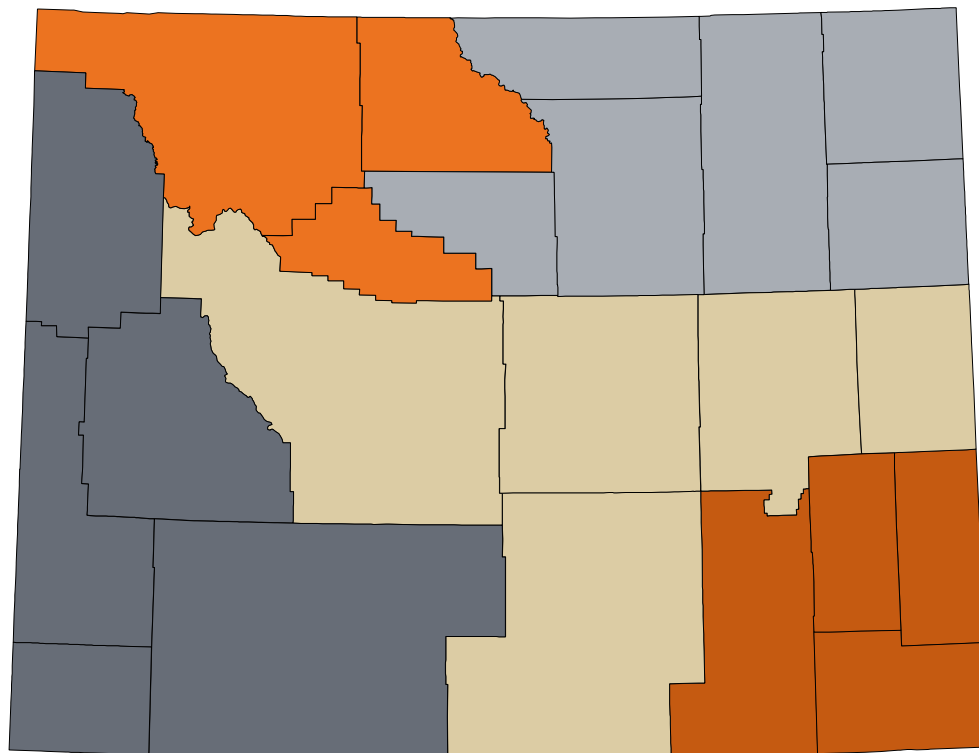
Healthcare providers in **18** counties reported ILI activity.

The electronically reported influenza cases represent **all five** Infectious Disease Epidemiology (IDE) Geographic Regions.

Three of the five IDE Geographic Regions indicated continued trends of **regional activity** this week with several counties seeing a **decrease** in reported case counts.

Healthcare providers across the state electronically reported **311** influenza cases (rapid influenza diagnostic tests and PCR confirmed tests).

IDE Geographic Regions of Wyoming



- Southeastern (**regional**, with increased cases in Goshen and Laramie counties)
- Central (**regional**, increased cases in Natrona and Converse counties)
- Western (**local**, increased cases in Lincoln County)
- Big Horn (**local**, increased cases in Big Horn County)
- Northeastern (**regional**, increased cases in Johnson, Sheridan, and Crook counties)



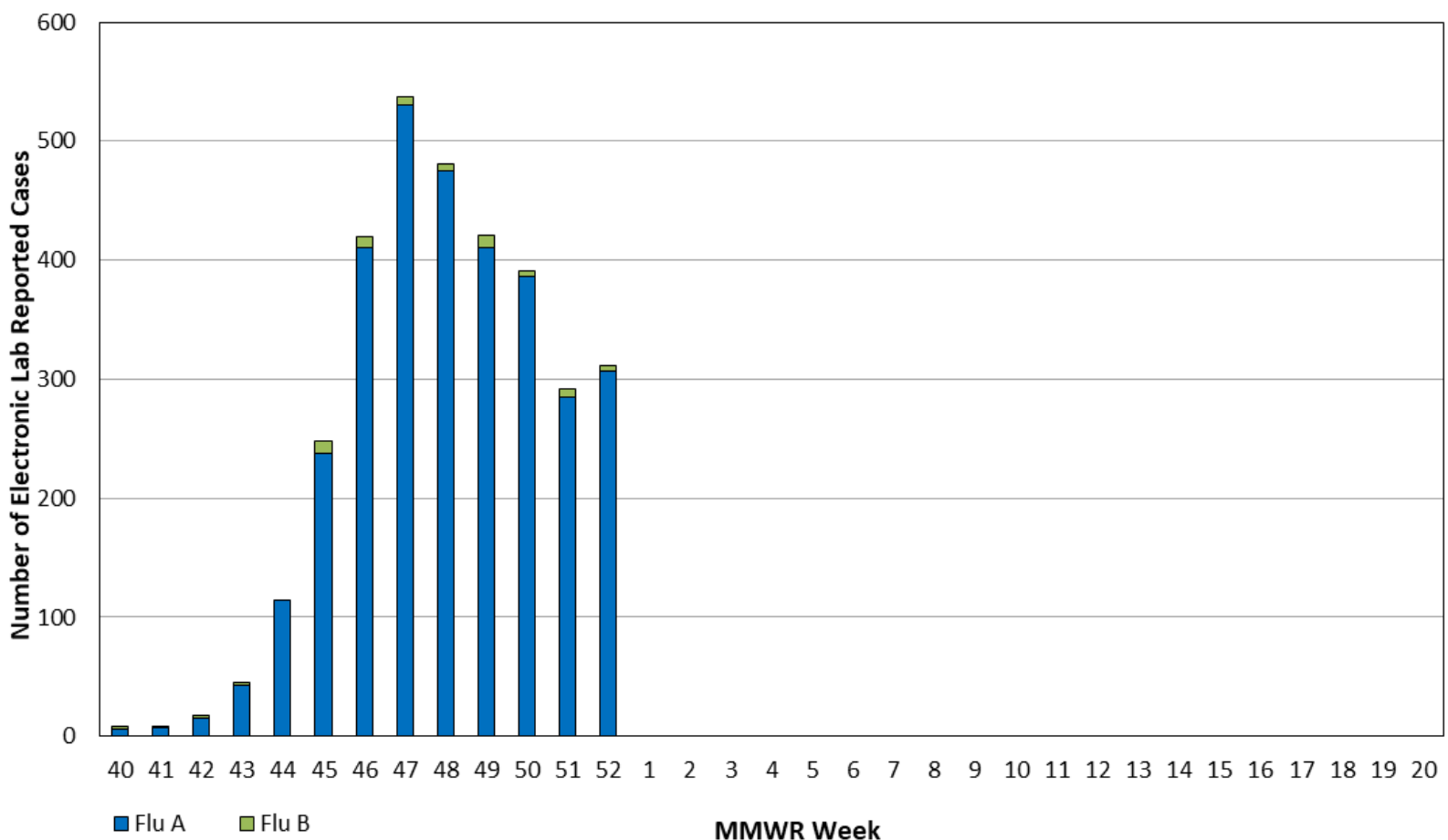
Public Health Laboratory

The overall volume of samples tested for influenza at the Wyoming Public Health Laboratory has increased since the introduction of the CDC Influenza SARS-CoV-2 Multiplex Assay. Wyoming saw a slight **increase** in the number of positive influenza specimens reported this week compared to week 51.

Healthcare and Clinical Laboratories

Clinical laboratories most frequently reported **Influenza A/H3N2 viruses** during MMWR Week 52, with a handful of H1N1 and Influenza B viruses.

Electronic Lab Reports of Influenza Cases



* This graph is not representative of all influenza cases across the state



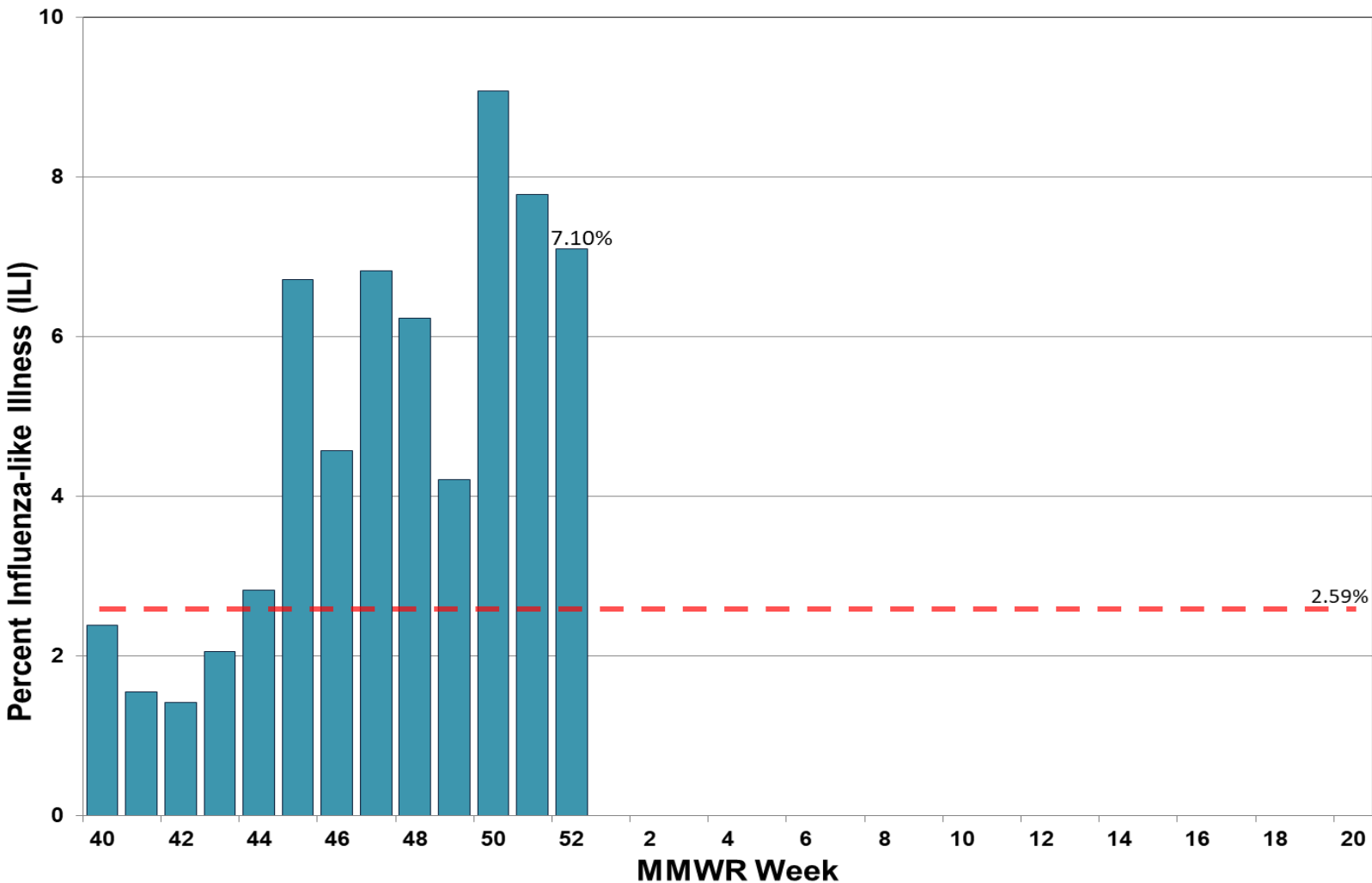
ILINet Providers

The percent of patient visits to ILINet Sentinel Providers for influenza-like illness was **7.10%**, which is **above** Wyoming's baseline (**2.59%**), and a **slight decrease** from week 51.

The Wyoming Department of Health received reports from **more than 50%** of the ILINet providers across the state.

Key Updates: All U.S. regions remain above their regional baseline for week 52. Based on CDC calculations, transmission within Wyoming remains **moderate** this week. Seasonal influenza activity remains high but is declining in most areas.

Weekly Percent of ILI Visits





Mortality Data

Tracking death certificates is the best surveillance system to capture and identify pneumonia and influenza-associated deaths in Wyoming. According to the CDC, influenza is infrequently listed on death certificates. Also, testing for seasonal influenza infections is not frequently performed, particularly among the elderly, who are at greatest risk for seasonal influenza complications and death. Therefore, public health officials may not identify influenza-associated deaths in many instances; consequently, this surveillance system may underestimate the true impact of influenza-associated deaths in the state.

There have been **27 pneumonia and influenza (P&I) mortality reports** certified since the beginning of the 2022-2023 Influenza Season.

Monthly P&I Mortality Reports (2017-2023)

