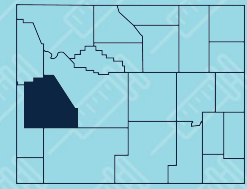


# SUBLETTE COUNTY

## 2021 Wyoming Immunization Report Card



	County (WyIR)	Wyoming (WyIR)	County Ranking
<b>Children (19-35 months)</b>			
4:3:1:3:3:1:4 <sup>1</sup>	52%	64%	20
4 DTaP	53%	66%	22
3 Polio	69%	81%	21
1 MMR	66%	78%	21
3 Hib	72%	79%	19
3 Hep B	68%	82%	22
1 VAR	63%	78%	23
4 PCV	65%	74%	19
2 Hep A	27%	46%	21
2 Rotavirus	70%	83%	22
<b>Children (7-years-old)</b>			
5:4:2:3:3:2:4 <sup>2</sup>	79%	72%	10
5 DTaP	82%	76%	10
2 MMR	82%	76%	10
2 VAR	81%	76%	10
<b>Adolescents</b>			
1 MenACWY (13-17 years)	68%	60%	9
2 MenACWY (16-18 years)	33%	19%	4
2 HPV (13-17 years)	25%	36%	21
1 Tdap (13-17 years)	75%	76%	20
<b>Adults (≥65 years)</b>			
1 PPSV23	35%	47%	21
Zoster	23%	26%	15

### Footnotes

Immunization coverage rates are obtained from the Wyoming Immunization Registry (WyIR).

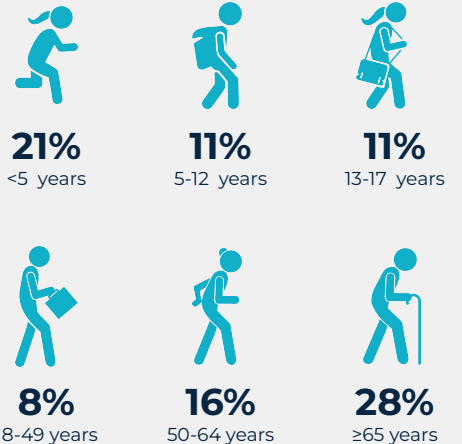
- 4:3:1:3:3:1:4 refers to 4 DTaP, 3 Polio, 1 MMR, 3 Hib, 3 HepB, 1 Varicella, 4 PCV.
- 5:4:2:3:3:2:4 refers to 4 Polio, 2 MMR, 3 Hib, 3 HepB, 2 VAR, 4 PCV.
- Program acronyms: Vaccines for Children (VFC), Wyoming Vaccinates Important People (WyVIP), Adult Hepatitis Vaccine (AHV).
- Data based on the number of waivers approved in 2021 as recorded in the Immunization Waiver Database.

For more information on WyIR data, reference the Immunization Data-Technical Notes found at [www.immunizewyoming.com](http://www.immunizewyoming.com).

### SUBLETTE COUNTY IMMUNIZATION SITES

- 3** Healthcare providers reporting to the WyIR
- 1** Healthcare providers enrolled in VFC and WyVIP programs<sup>3</sup>
- 1** Healthcare providers are enrolled in the AHV program<sup>3</sup>

### SUBLETTE COUNTY FLU VACCINE COVERAGE



### IMMUNIZATION WAIVERS<sup>4</sup>

	COUNTY	STATE
Children <5 years	3	285
Children ≥5 years	13	699
Religious	16	971
Medical	0	13

