



# INFLUENZA REPORT

## 2021-2022 Influenza Season

MMWR Week 13

**Weekly Report of Influenza and Influenza-like Illness (ILI) Activity**



## Influenza and Influenza-like Illness Activity

### Spread

**Sporadic**  
Geographic Spread

### Flu Activity

**Decreased**  
Activity decreased  
this week

### ILI Activity

**Minimal**  
Low outpatient  
respiratory illness  
activity

### Co-circulating

**Other Viruses**  
SARS-CoV-2  
RSV

### Seasonal Data

**Types of Flu**  
Influenza A and B  
viruses are  
circulating

### Subtypes

**Flu A (H3N2)**  
Predominant  
circulating subtype

### Outbreaks

**0**  
No reported  
outbreaks

### Severity

**Inpatients**  
Reports of  
hospitalizations

### Deaths

**0**  
No reported  
pediatric deaths

### Syndromic

**0**  
No syndromic  
anomalies were  
reported

### EMS

**Suspected ILI**  
The reports  
decreased this  
week

### Hot Spots

**Tracking Trends**  
No hot spots



## Geographic Activity by Regions

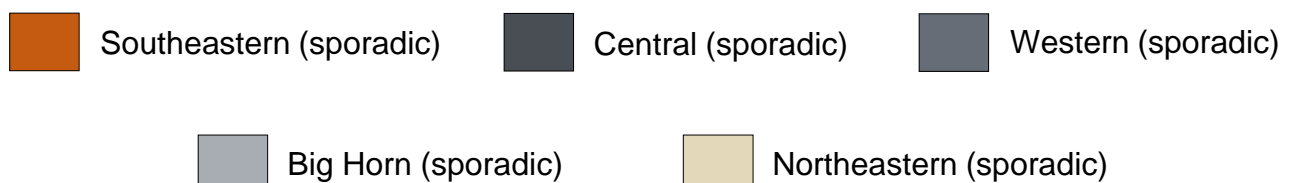
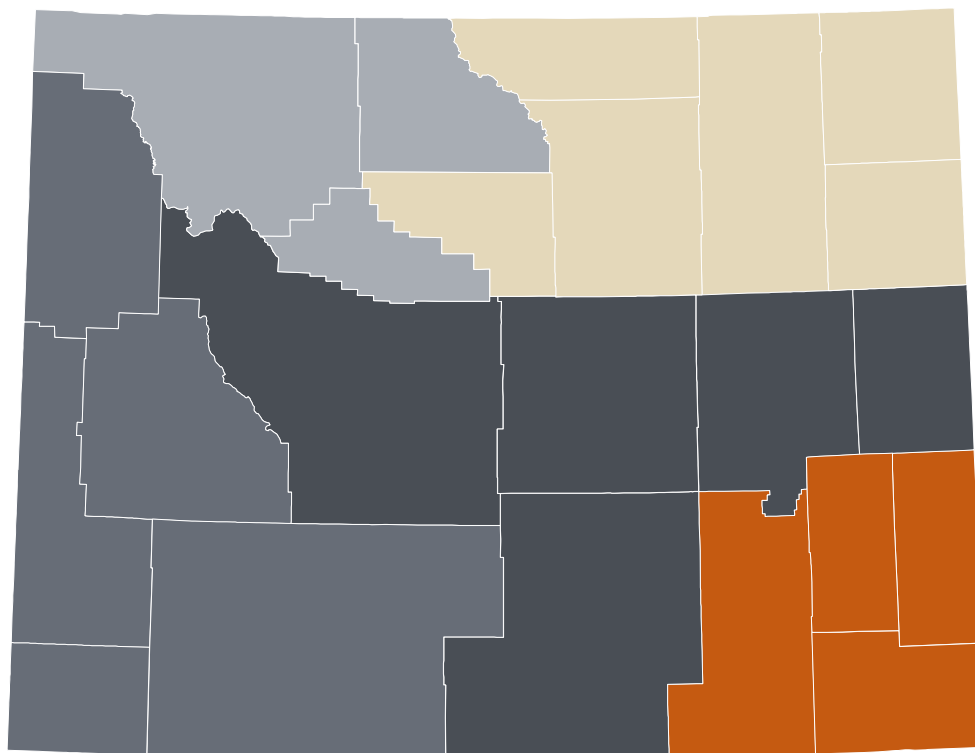
Wyoming observed **sporadic activity** this week (MMWR Week 13).

Healthcare providers in **several** counties reported ILI activity.

The influenza cases represent **all** Infectious Disease Epidemiology (IDE) Geographic Regions.

All of the IDE Geographic Regions had **sporadic activity**.

### IDE Geographic Regions of Wyoming





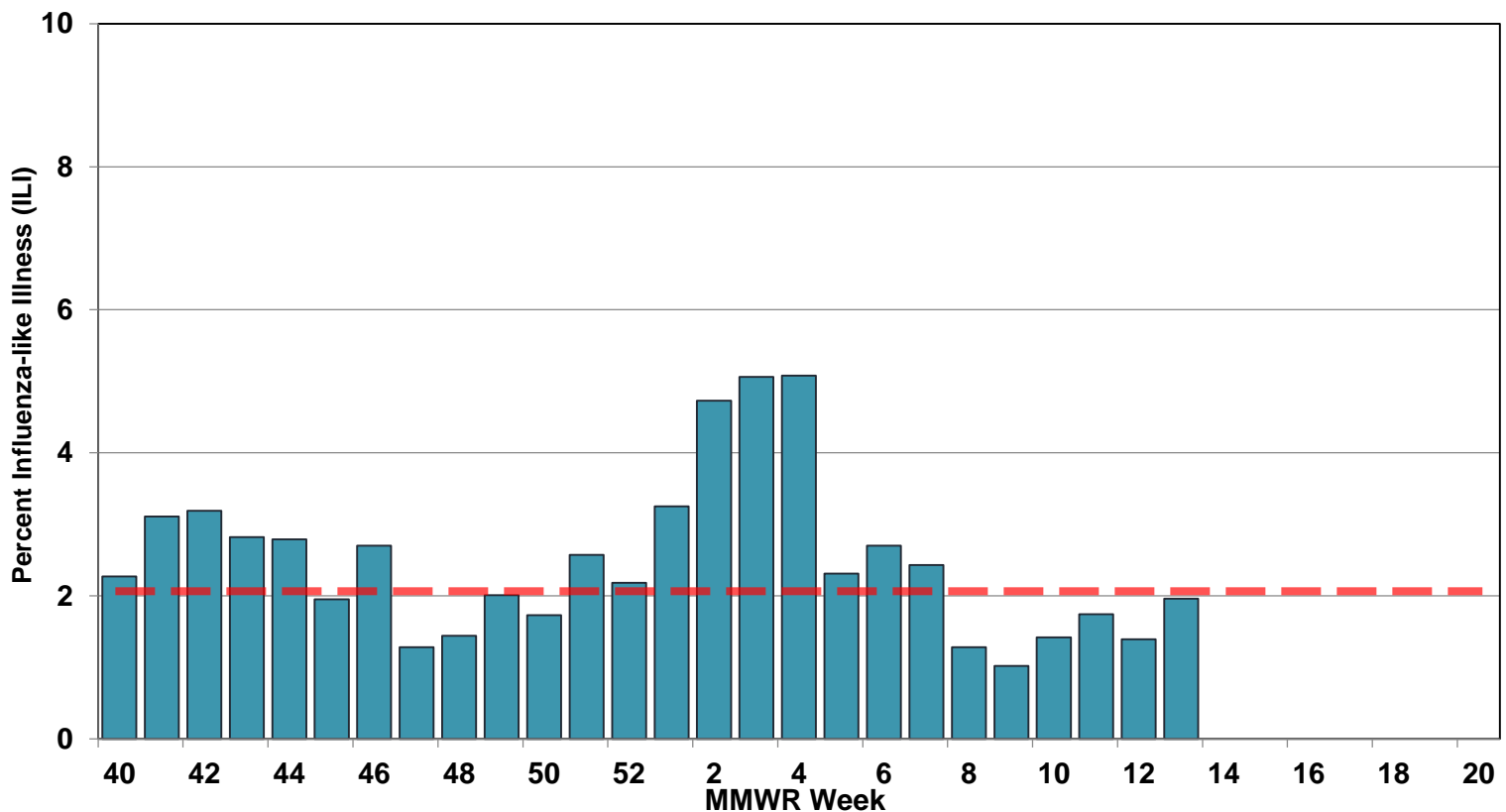
## ILINet Providers

The percent of patient visits to ILINet Sentinel Providers for influenza-like illness was **1.96%**, which is **below** Wyoming's baseline (**2.06%**).

The Wyoming Department of Health received reports from less than **50%** of the ILINet providers in Wyoming.

This season, healthcare providers in **22 of 23** counties reported influenza or influenza-like illness activity.

## Weekly Percent of ILI Visits





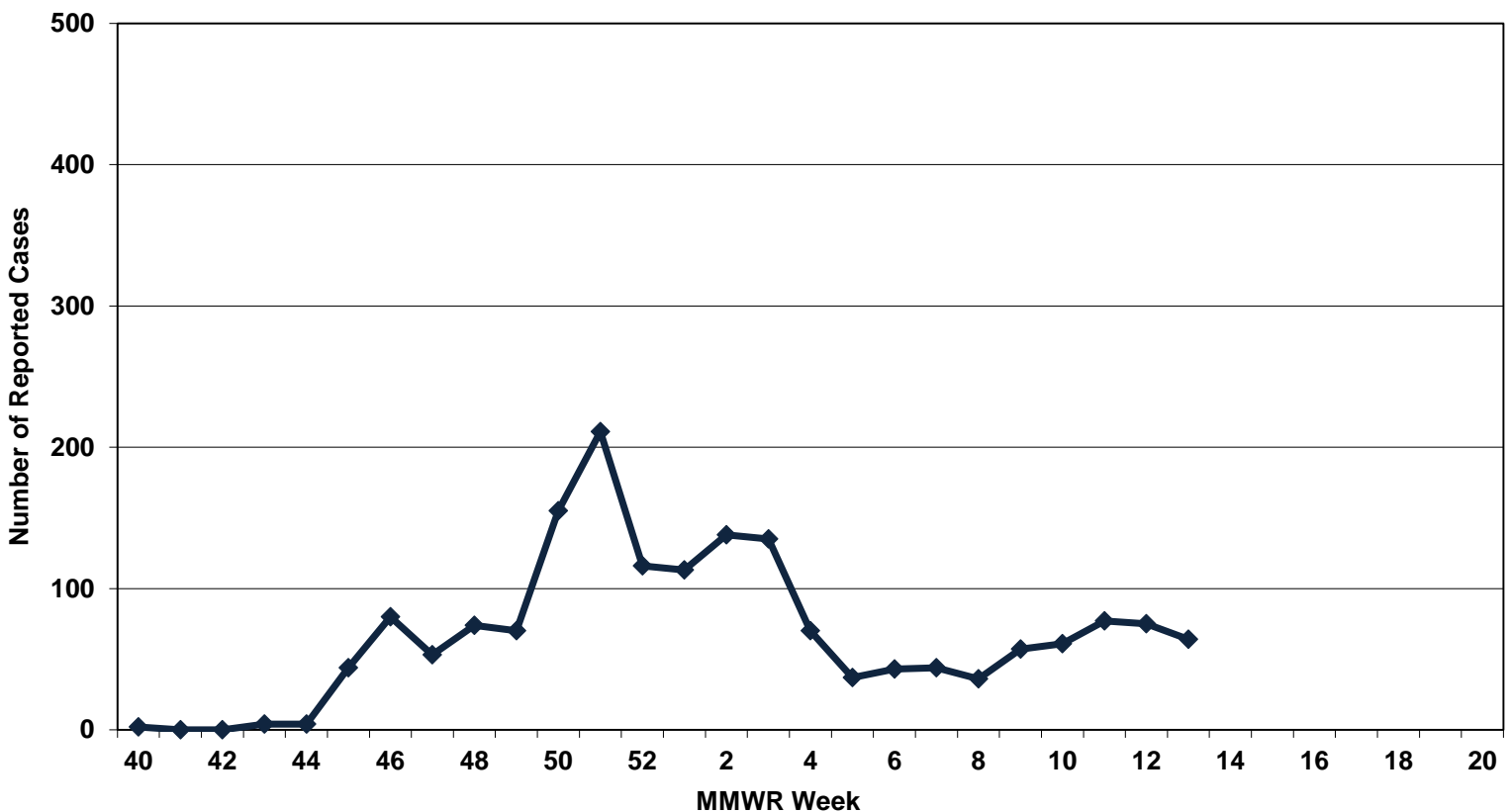
## Public Health Laboratory

The overall volume of samples tested for influenza at the Wyoming Public Health Laboratory has increased since the introduction of the CDC Influenza SARS-CoV-2 Multiplex Assay. The state lab reported **influenza A (H3N2) viruses** during MMWR Week 13. Influenza A (**H3N2**) viruses are the predominant viruses circulating in Wyoming.

## Healthcare and Clinical Laboratories

Clinical laboratories most frequently reported **influenza A viruses** during MMWR Week 13, but influenza B viruses co-circulated with influenza A viruses. The subtyped samples were reported as influenza A (**H3N2**) viruses. The overall number of reports increased this week.

### Electronic Reports of Influenza Cases



\* The trend is not representative of all reported influenza cases.



## Mortality Data

Tracking death certificates is the best surveillance system to capture and identify pneumonia and influenza-associated deaths in Wyoming. According to the CDC, influenza is infrequently listed on death certificates. Also, testing for seasonal influenza infections is not frequently performed, particularly among the elderly, who are at greatest risk for seasonal influenza complications and death. Therefore, public health officials may not identify influenza-associated deaths in many instances; consequently, this surveillance system may underestimate the true impact of influenza-associated deaths in the state.

There were **41** pneumonia and influenza (P&I) mortality reports certified since the beginning of the 2021-2022 Influenza Season.

## Monthly P&I Mortality Reports

