

Investigations: K-12 Settings

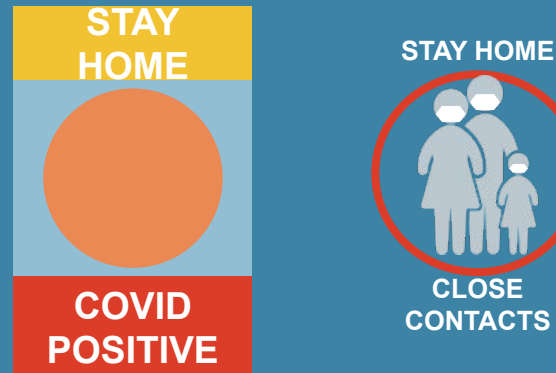
- In all scenarios below, a student or staff is considered a close contact when they are within **6 feet of the COVID-19 positive individual for 15 minutes or more**.
- Contacts asked to self-monitor should monitor themselves closely for COVID-19 symptoms during the two weeks after exposure. If they develop symptoms, they should stay home and contact a healthcare provider about testing for COVID-19. If contacts who are self-monitoring develop symptoms but do not get tested, they should remain home until at least 10 days after symptom onset.
- In all scenarios below, **individuals who are fully vaccinated and identified as close contacts do not need to stay home from school**. However, if they have an exposure, it is recommended that they be tested 3-5 days after the exposure.
- K-12 students or staff who are **close contacts due to exposure to a household member and are not fully vaccinated are required to stay home from school**.

When a masked student/staff tests positive and close contacts were wearing masks.



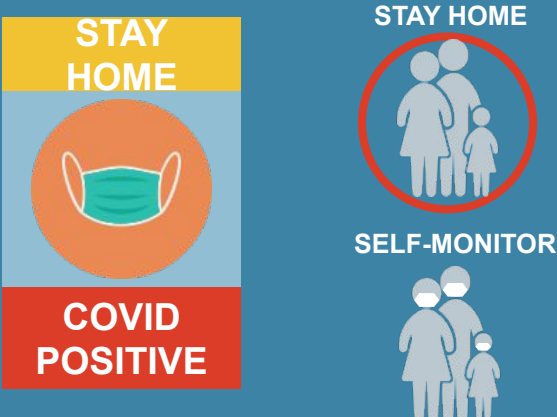
Everyone Masked

When an unmasked student/staff tests positive and close contacts were wearing masks.



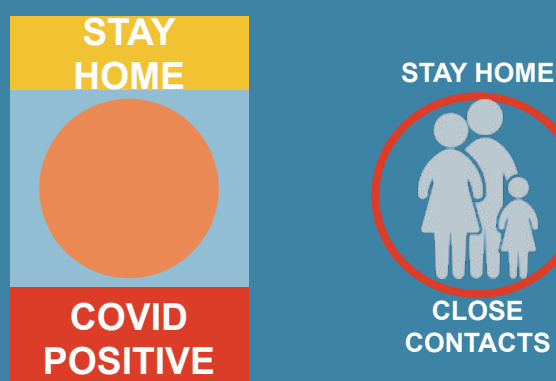
Close Contacts Masked

When an masked student/staff tests positive and SOME close contacts were wearing masks.



Some Close Contacts Masked

When an unmasked student/staff tests positive and close contacts were NOT wearing masks.



No One Masked