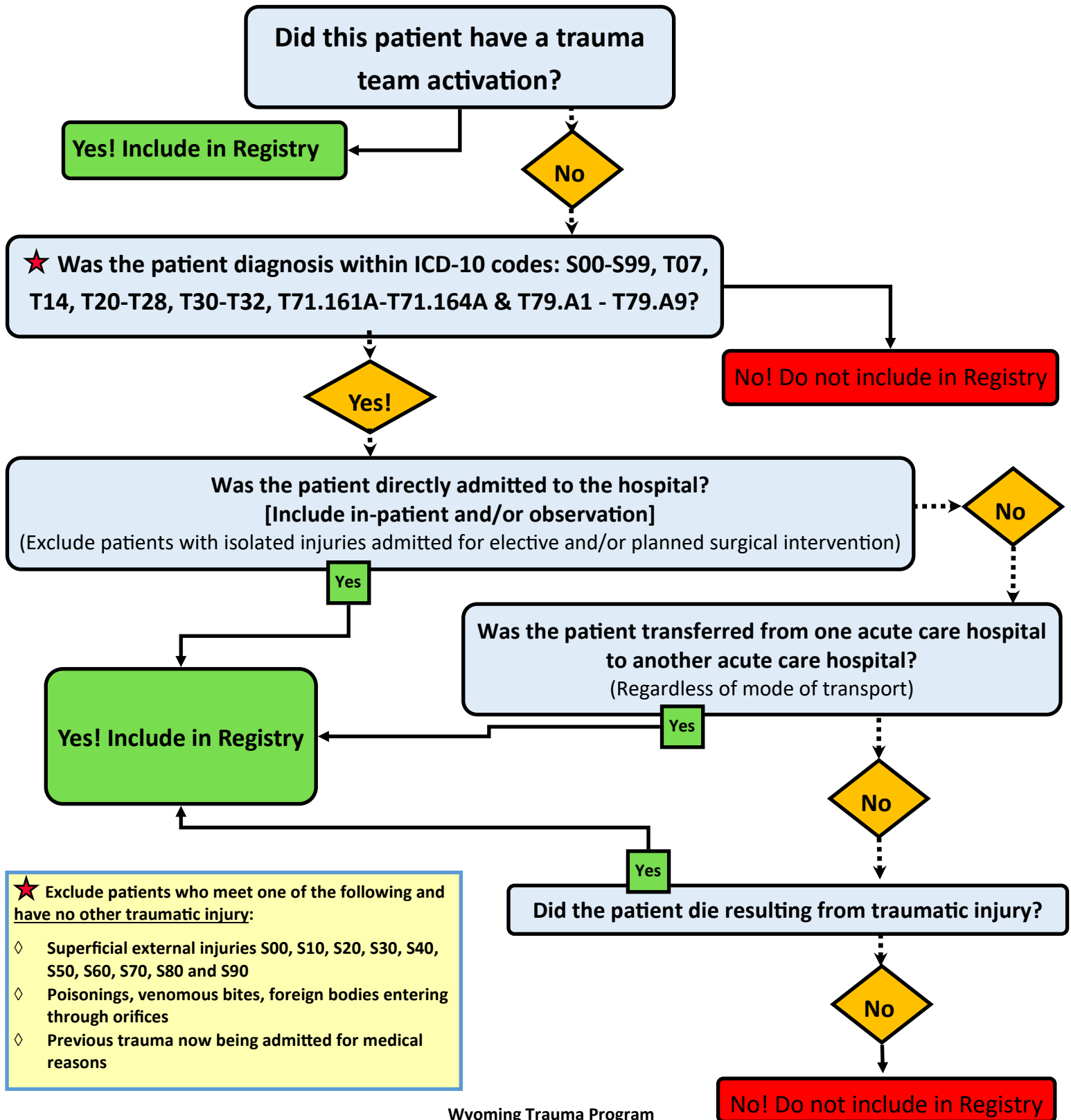


Wyoming Trauma Registry Inclusion Criteria



★ Exclude patients who meet one of the following and have no other traumatic injury:

- ◇ Superficial external injuries S00, S10, S20, S30, S40, S50, S60, S70, S80 and S90
- ◇ Poisonings, venomous bites, foreign bodies entering through orifices
- ◇ Previous trauma now being admitted for medical reasons