

FAMILY PROMISE OF CHEYENNE

HISTORY

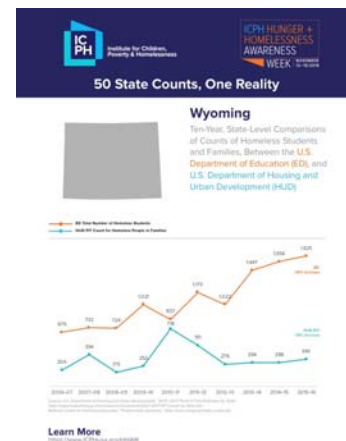
*Family Promise of Cheyenne was established in 2001

*Serves children and their families experiencing homelessness with emergency shelter and supportive services-program has expanded to include formal aftercare and supportive services for families outside the shelter

*Utilizes partnerships with faith communities to provide shelter, volunteers, and meals. Currently 15 faith communities and over 400 volunteers

FAMILY HOMELESSNESS IN OUR COMMUNITY

- Families as defined by them-must include at least one child under the age of 18 in their custody
 - Composition of families in the program:
 - Past Year: 25% are two-parent families, 69% are single mom families, 6% kin raising children
 - Past 5 years: 22% are two-parent families, 56% are single mom families, 2% are single dad families, 11% kin raising children, 9% are other family composition
- 51% of the children in our shelter program are under the age of 5 years-old
- Definition of homelessness-HUD vs. Dept. of Education
- Wyoming-2015-16 school year HUD 340 homeless youth, ED 1,625 homeless youth-141% increase in the last 10 years in the State
- LDCS#1 2017-18 over 300 homeless youth-this only includes school age children and only the children identified
- Where are our families living-"doubled up", "couch surfing", motels, substandard housing, cars
- 56 families applied for shelter last year-23 families applied the year before-150% increase
- Sheltering 25-30% of the families applying for shelter.

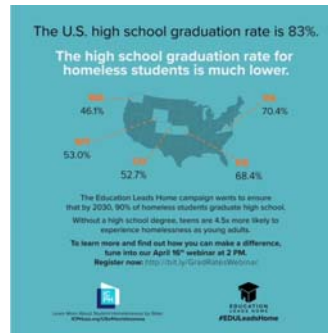


IMPACT OF HOMELESSNESS ON YOUTH

Impact of Homelessness:

- *82% said being homeless had big impact on life overall
 - *72% on their ability to feel safe and secure
 - *71% on their mental and emotional health
 - *62% on physical health
- *60% said it was hard to stay in school and 68% said it was hard to do well in school
- *42% said they dropped out of high school at least once
- *50% said they had to change school at least once and many did so multiple times

Source "Hidden in Plain Sight"



THE PROGRAMS AND PROCESS EMERGENCY SHELTER

- Apply for services-reach us through partnerships (Comea, faith communities, 21 I, Peak, DFS, CRMC, school district)
- Application includes history and current circumstances, needs, background check (safety of the children are our top priority) (Application Attachment A)
- Needs assessed at intake to determine immediate basic needs (Attachment B)
- Immediate referrals and basic needs met-regardless of next step
- Once application is complete-place on waiting list or process for entrance if an opening
- Weekly case management meeting-often times meeting multiple times a week with the family as they spend time at the Day Center. Incentives with the weekly meetings.
- Life skills classes-in addition to individual work-parenting and relationship group, yoga and mindfulness for the youth (parents if they choose), tenant education, financial literacy group for youth (to start in early 2019)
- Housing applications-CHA/Income based housing/Fair market housing
- Average stay is 2 ½ months in the shelter-can range from 2 weeks to 6 months



THE PROGRAMS AND PROCESS SHELTER EXIT AND BEYOND THE WALLS-AFTERCARE

- Average stay is 2 ½ months in the shelter-can range from 2 weeks to 6 months
- Beyond the Walls-Aftercare upon exit
 - 62% of families chose to participate in the last year
 - Ongoing case management
 - Monthly incentives
 - 100% of families still employed and stably housed



FAMILY PROMISE OF CHEYENNE IMPACT CURRENT PERFORMANCE MEASUREMENTS

- Percentage of families securing income prior to exiting the shelter-85%
- Percentage of families securing stable housing prior to exiting the shelter-74%
- Percentage of children obtaining medical insurance while in the program-92%
- Percentage of parents reporting a significant increase in their family satisfaction and a stronger parent-child relationship- 90%
- Percent of school age children enrolled and attending school- 100%
- Percentage of children reporting an increased ability to cope with difficult emotions because of the yoga and mindfulness group- 100%

WHAT'S NEXT

Beyond Shelter (Pilot Program)-Providing financial assistance for 3 months while the family works on stabilizing foundation-case management every 2 weeks. Homeless prevention, rapid rehousing, diversion.

- Large percentage of families are not receiving immediate shelter-left without anywhere to go
- Limited Homeless prevention/rapid rehousing services in our community
- Ability to serve larger number of families with fewer dollars

Static Site Family Only Shelter With Resource Center-Shelter with the ability to immediately house a larger number of families. Still operate the rotation for those appropriate.

- Lower barrier (still unable to accept registered sex offenders/current substance use)
- Keeping families together in individual rooms
- Safety for children (ACE's)

IT TAKES A VILLAGE...

Community Partners:

- Shelter-Comea, USI, Safe House
- Mental Health and Medical Resources-Peak Wellness Center, Crossroads Healthcare Clinic, UWFP, CRMC, Healthworks
- Education/Training-Climb Wyoming, Dad's Making a Difference, DVR, LCCC, Trade Schools
- Child Services-LCSD#1, Head Start, Stride
- Housing-CHA, Landlord Association, Income Based Housing Complexes, My Front Door, Habitat for Humanity
- Additional Resources-Community Action of Laramie County, DFS, Multiple Faith Communities/Faith Based Organizations,

FAMILY PROMISE OF CHEYENNE
BECAUSE EVERY CHILD DESERVES A HOME



Unaccompanied Students Initiative History



- Strong Families Action Team with Laramie County Community Partnership
- Point in Time
- Youth Retreat
- Became its own non-profit in February 2019

USI Mission – Provide a safe, stable home and to develop support systems for high school students experiencing homelessness



- 21 students graduated
- 2 students completed HISET
- 3 recently graduated students transitionally supported



Natalie House

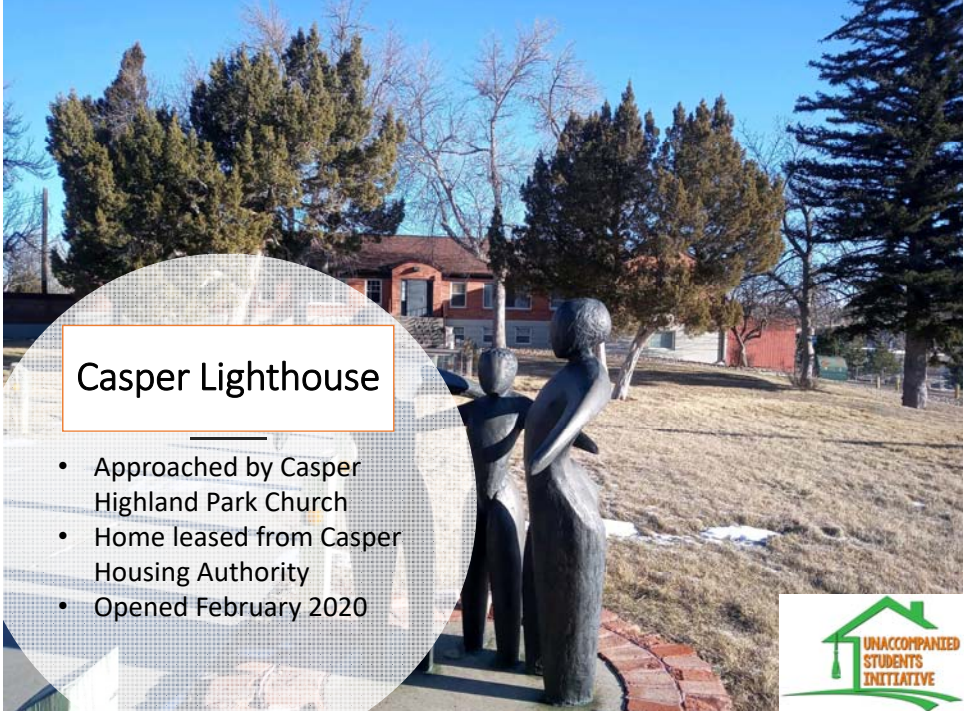
- House donated in December 2018
- Home to four girls



Twinhomes


- Opened in April 2019
- \$270,000 left to pay on mortgage
- Home to six boys





Casper Lighthouse

- Approached by Casper Highland Park Church
- Home leased from Casper Housing Authority
- Opened February 2020



Unaccompanied Students Initiative Challenges



- Mental health
- Physical health
- Substance abuse