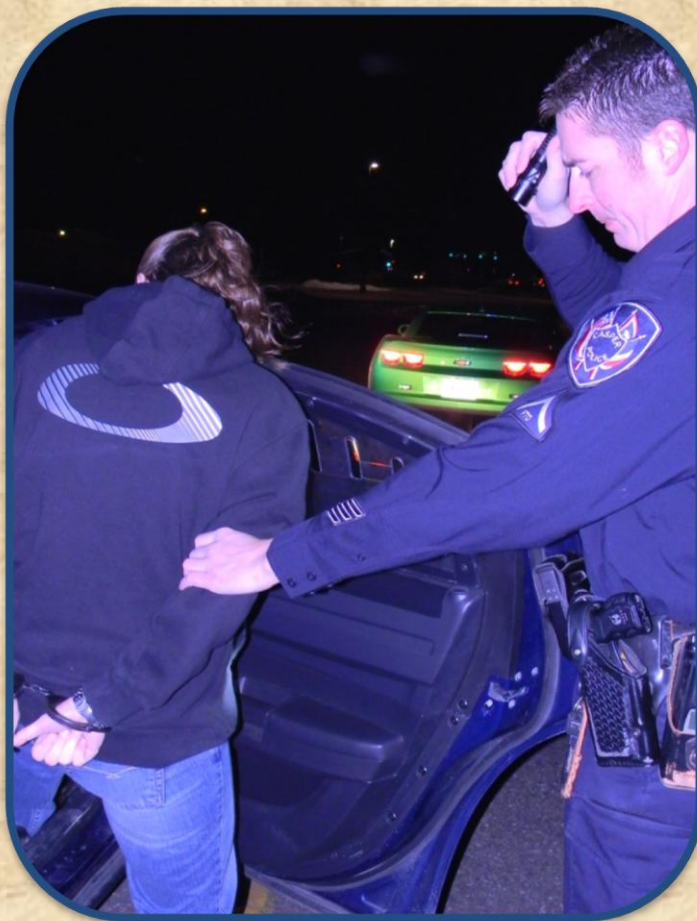


2010

# ALCOHOL and CRIME in WYOMING



**Wyoming Association of Sheriffs  
and Chiefs of Police**

WYOMING DEPARTMENT OF  
TRANSPORTATION – Highway Safety Program

ALCOHOL AND CRIME IN WYOMING:  
2010

April 2011

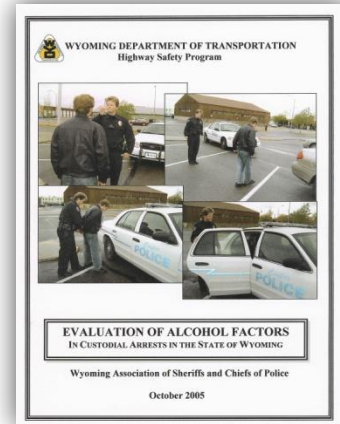
The analysis of the data collected by the Wyoming Association of Sheriffs and Chiefs of Police and the printing of this report was made possible through the assistance of Federal 402 Highway Safety funds received from the Wyoming Department of Transportation – Highway Safety Program. The Project was managed by Johnson and Associates of Douglas, Wyoming. The report was authored by Ernest L. Johnson, Director of Services.

TABLE OF CONTENTS

1. INTRODUCTION.....	2 - 3
2. EXECUTIVE SUMMARY.....	4 - 7
3. SIGNIFICANT STATISTICS AND FINDINGS .....	8 - 10
4. PROJECT DESIGN and IMPLEMENTATION.....	11
5. DATA COLLECTION .....	11
6. DATA/STATISTICS .....	12 - 38
Table – Number of Arrests and Percentages	13
Table – Statewide arrests – Demographics	14
Tables – Alcohol and Drug Involvement by Offense	15
Table – Meth, Drugs and Public Intoxication	16
Pie Chart – Methamphetamine, Alcohol and Other Drugs	17
Bar Graph – Alcohol Arrests Percentages	18
Bar Graph – Public Intoxication arrests by County	19
Bar Graph – DUI arrests by County	20
Line Graph – Arrests by Month	21
Table – Location of Alcohol Consumption/Sale	22
Tables – DUI Arrests; Traffic Crashes	23
Bar and Pie Graphs – DUI statistics	24-27
Tables and Bar Graphs – Juvenile Statistics	28-37
Pie Graph – Where Minors Obtain Alcohol	38
Table – Natrona County Statistics (Sample County Statistics)	39-42
7. ACKNOWLEDGEMENTS .....	43
8. ATTACHMENTS .....	44 - 48
A - Sample Reporting Form	
B - BAC Educational Guide – Males	
C – BAC Educational Guide - Females	
D - Project Manager Vita	

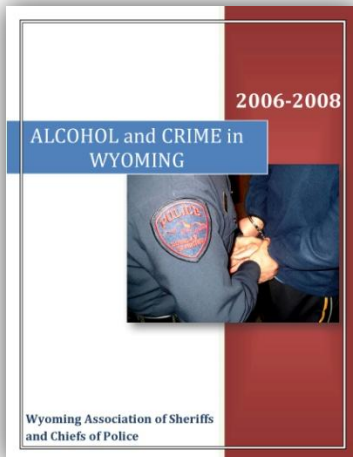
### INTRODUCTION

In spring of 2005, the Wyoming Association of Sheriffs and Chiefs of Police received grant funding from the Wyoming Department of Transportation – Highway Safety Program to collect and evaluate alcohol-related arrest data in ten counties in Wyoming for a period of six months. Although it had long been suspected that alcohol was a factor in a large number of custodial arrests in Wyoming, reliable data had not been available previously to more accurately determine the scope and impact of alcohol on crime in this state.



This pilot project was initiated with the expressed purpose of formulating effective enforcement strategies aimed at reducing the number of alcohol related crimes and traffic crashes in Wyoming. The data collection process has continued since 2005, has been refined and was expanded to include data collection in all twenty-three counties in 2006. The collection of data was then extended to a full twelve-month period in 2008.

A sufficient amount of alcohol-related arrest data has now been collected which can be analyzed for the purpose of identifying trends in alcohol involvement in crime in Wyoming. Consistent patterns of alcohol involvement for certain crimes are now more evident and the times when these crimes are occurring more predictable.



***To date, information has been collected from a total of 80,869 persons who were arrested and subsequently detained in a detention facility in Wyoming. Specific information that has been collected during the book-in process includes the following:***

- Type of offense
- Whether alcohol or drugs were involved
- Location of last consumption and point of sale
- Known blood alcohol content levels for alcohol related arrests; and
- Demographic information

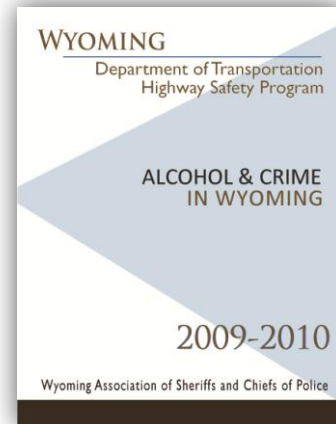
Although the data fields and the process for collection have been standardized and relatively consistent for the past five years, the time periods for collection and reporting have not. This was due mainly to the timing and availability of grant funding. This inconsistency in reporting periods have made it difficult to compare statistics from year-to-year, as well as with state traffic crash data. Beginning this year, the collection period has now been standardized and the analysis and report will be issued on a calendar year basis – January through December.

---

## Alcohol and Crime in Wyoming - 2010

---

The Wyoming Association of Sheriffs and Chiefs of Police has published the results and analysis of the data collection efforts each year for the last five years in two separate reports. The main report provides statewide statistics and averages, along with comparisons of county statistics in specific categories. The accompanying supplemental report provides county, community and local law enforcement agency specific statistics. These reports can be accessed online on the following websites <http://wascop.com> and <http://jandaconsulting.com>



*The information collected from a total of 18,946 persons who were arrested and subsequently detained in a county detention facility in Wyoming during this twelve-month period (January 1 through December 31, 2010) confirms what law enforcement officers who patrol the highways and who respond to calls for service in Wyoming already know from experience – alcohol is the major contributing factor in situations that result in someone going to jail.*





### EXECUTIVE SUMMARY



This Executive Summary highlights a few of the significant findings contained in this report. It focuses on issues that are of obvious concern or which may be of greater interest to the general public; however, a careful review of other relevant findings and statistics contained in the main body of this report is essential in order to gain a more complete perspective of the impact of alcohol on crime in Wyoming.

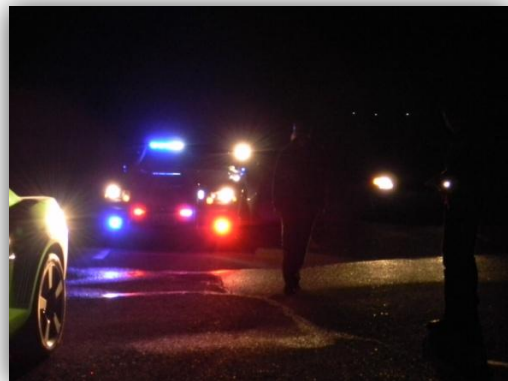
This report contains an analysis of alcohol-related arrest information collected in all twenty-three counties in Wyoming during a twelve-month time period (January 1, through December 31, 2010) by the Wyoming Association of Sheriffs and Chiefs of Police. *Information was collected from a total of*

*18,946 persons who were arrested and subsequently detained in a county detention facility.* The alcohol-related arrest data contained in this report provides a detailed, statistical picture of the impact of alcohol abuse on crime in Wyoming.

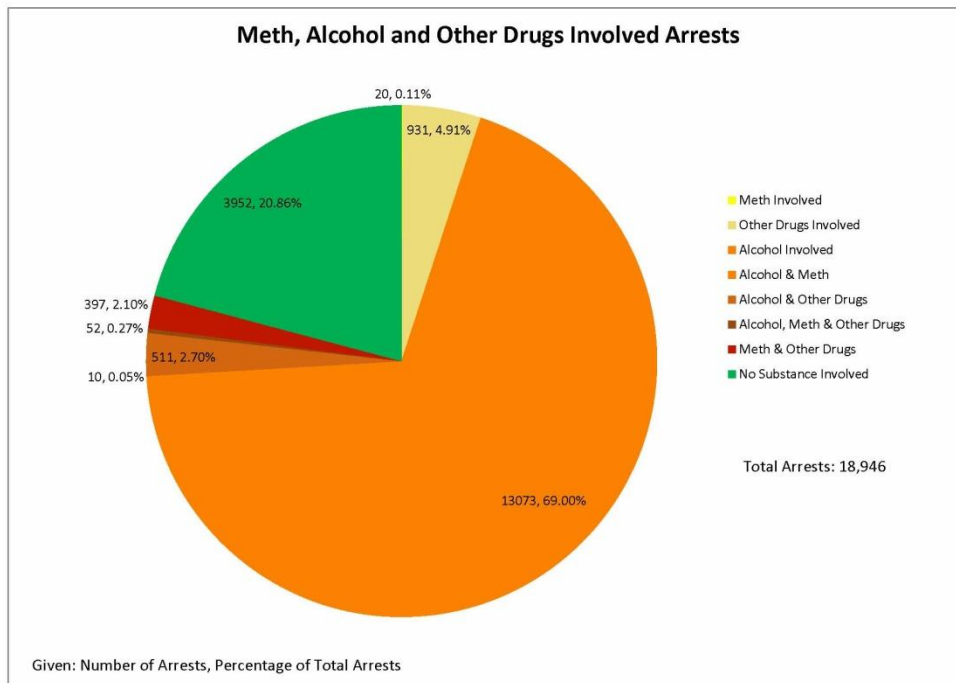
The profile of the average person taken to jail in Wyoming continues to be relatively consistent with previous years. Eight out of ten times it was a male – average age 34. Ten percent of the time it was an out-of-state visitor and 5.7% of the time it was an in-state visitor. Juvenile arrests that resulted in detention in a county detention facility accounted for less than 2% of the total custodial arrests.

A review of the data collected from persons arrested and subsequently taken to jail indicates that Wyoming continues to be relatively safe from what is generally considered to be “serious” crime. The number of persons who are arrested for felonies are relatively low when compared to the number of persons arrested for minor crimes (misdemeanors). Felony arrests accounted for less than 7% of the total arrests statewide.

*Although Wyoming is relatively “safe” from what is generally considered to be serious crime, the high percentage of alcohol-involved arrests, the inordinate number of arrests for public intoxication and driving under the influence, and the high levels of blood alcohol content for drivers arrested represent a real and significant threat to public safety.*



A total of 18,964 persons were arrested statewide and taken to jail in 2010 - and more than three out of four times the arrest involved alcohol and/or other drugs. *The level of alcohol involvement reported in the 80,869 reported arrests over the last five years indicates that alcohol is, and continues to be, the drug that has the greatest influence on crime in Wyoming.*



- Alcohol was involved in 72.03% of all custodial arrests.
- Alcohol was involved in 75.22% of all misdemeanor arrests.
- Methamphetamine was involved in 2.53% of the 18,946 reported arrests.
- “Other drugs” were involved in 9.98% of the reported arrests.

***79.14% of the 18,946 arrests statewide involved alcohol and/or other drugs.***



The high percentage of alcohol-involved arrests, the inordinate number of arrests for public intoxication and driving under the influence and the high levels of blood alcohol content (BAC) recorded for this twelve-month reporting period equals or surpasses the statistics that have been recorded during each of the previous four years<sup>1</sup>.

***The statistics for alcohol involved arrests, public intoxication and DUI arrests have continued to show an upward trend during the last five years.***

- Arrests for public intoxication accounted for 16.99% of all arrests.
- The average blood alcohol content for persons arrested for public intoxication was 0.2317.
- Driving under the influence arrests accounted for 35.83% of all arrests.
- The average reported blood alcohol content for DUI arrests statewide was 0.1525.<sup>2</sup>
- 46% of persons arrested for DUI had a reported BAC level above 0.16 and 8% had a BAC of 0.24 or greater.
- The average reported BAC for 564 persons who were arrested for DUI after being involved in a traffic crash was 0.1659.
- The age group (in 5-year increments) with the highest percentage of DUI arrests was age 21-25 (19%), followed by age 26-30 (16%) and 31-35 (11%).



---

<sup>1</sup> Alcohol and Crime in Wyoming 2006-2008 - May 2009; and Alcohol and Crime in Wyoming 2009-2010 – September 2010, Wyoming Association of Sheriffs and Chiefs of Police

<sup>2</sup> In Wyoming, a person driving with a blood alcohol content of 0.08 is legally presumed to be impaired.



***In order to grasp the significance of these blood alcohol content statistics, it should be noted that a physically fit male who weighs 180 pounds would have to consume at least seven drinks in one hour in order to achieve a BAC of 0.15 – a female weighing 120 pounds would have to consume five drinks in one hour.***

Please refer to the Alcohol Impairment Educational Guides for males and females in the Attachments Section of this report for information about the level of impairment for other body weights and drinks consumed.

**CONCLUSION:** The statistics in this report provide evidence of the high level of alcohol abuse statewide. The high percentage of alcohol involved arrests (72.03%), the inordinate number of arrests for public intoxication (4,398) and DUI (5,862) and the high levels of BAC recorded for these individuals (average BAC: 0.2317 for public intoxication and 0.1525 for DUI) appear to validate the concerns about alcohol abuse expressed by Wyoming residents in the most recent statewide public opinion survey<sup>3</sup>. Some excerpts from the survey that involved 4,699 Wyoming residents:

- 77.8% view alcohol abuse by Wyoming adults as a serious or somewhat serious problem
- When Wyoming residents were asked whether they would support a state law that would prohibit selling or serving alcohol to someone who is obviously intoxicated:
  - 76.8% strongly supported such a law
  - 13.6% somewhat supported such a law
- 86.8% of Wyoming residents believe that drinking and driving in their community is a serious or somewhat serious problem.



This report includes statewide statistics and averages, along with comparisons of county statistics in specific categories. In addition, there are approximately one hundred pages of data in a supplemental report that provides county, community and local law enforcement agency specific statistics.

***The statistics contained in this report identify significant public safety issues which merit prompt further discussion, analysis and action by local law enforcement, citizens and state/community leaders.***

---

<sup>3</sup> Wyoming Alcohol Use Issues Survey, Wyoming Survey & Analysis Center, October 2006

## SIGNIFICANT STATISTICS AND FINDINGS

The high percentage of alcohol-involved arrests in Wyoming, the inordinate number of arrests for public intoxication and driving under the influence - and the reported high level of blood alcohol content equaled or surpassed the statistics recorded during each of the previous three years. The statistics contained in this report identify serious public safety concerns which hopefully will prompt further discussion and analysis by local law enforcement, citizens and state/community leaders.

Detailed charts and graphs of this data are provided in the Data/Statistics section of this report. The number and percentage of arrests are provided for every listed category of concern on a statewide basis, as well as by county and by law enforcement agency for more in-depth comparison purposes. Listed below are a few of the noteworthy alcohol-related statistics and findings in this report.

\*\*\*\*\*

- **Alcohol was a factor in 72.03% of the custodial arrests in Wyoming.**
  - Counties with significantly higher statistics:
    - Teton – 80.00%
    - Albany – 83.69%
    - Crook – 95.18%
- **Alcohol was involved in 75.22% of the misdemeanor arrests.**
- **Methamphetamine was involved in 2.53% of the arrests statewide.**
  - Counties with significantly higher statistics:
    - Sweetwater – 6.45%
    - Johnson – 7.86%
    - Washakie – 7.98%
- **“Other” drugs were involved in 9.98% of the reported arrests statewide.**
  - Counties with significantly higher statistics:
    - Sweetwater – 19.88%
    - Johnson – 21.40%
    - Platte – 22.77%
    - Carbon – 23.99%
- **Arrests for Public Intoxication accounted for 16.99% of all arrests statewide.**  
*(The statewide average does not include 1,620 persons who were admitted into the Fremont County Alcohol Crisis Center for public intoxication)*
  - Counties with significantly higher statistics:
    - Natrona – 19.69%
    - Teton – 26.80%
    - Fremont – 34.66%

### Significant Statistics and Findings (continued)

- **The average blood alcohol content for all persons arrested for public intoxication was 0.2317.**
  - Counties with significantly higher statistics:
    - Washakie – 0.2676
    - Fremont – 0.2427
    - Sublette – 0.2425
- **Driving under the influence (DUI) arrests accounted for 35.83% of all arrests statewide.**
  - Counties with significantly higher statistics:
    - Crook – 77.11%
    - Weston – 56.72%
    - Albany, Big Horn, Campbell, Goshen and Sublette - 50% or above
- **2.6% of the arrests for DUI involved drugs;**
  - Counties with significantly higher statistics:
    - Platte – 11.88%
    - Big Horn – 8.33
    - Lincoln – 6.12%
- **12.97% of traffic crashes resulting in arrests involved drugs.**
  - Counties with significantly higher statistics:
    - Carbon – 31.82%
    - Big Horn – 30%
    - Crook, Hot Springs and Park – 20%
- **The average BAC reported for 564 traffic crashes that involved alcohol was 0.1659.**
- **The average blood alcohol content (BAC) reported for 5,862 persons arrested for driving under the influence statewide was 0.1525.**
  - Counties with significantly higher statistics:
    - Goshen - 0.1679
    - Hot Springs - 0.1718
    - Big Horn - 0.1803
- **46% of the persons arrested for driving under the influence had average blood alcohol content above 0.16.**
  - 8% had a BAC of 0.24 or greater
  - 12% had a BAC between 0.20 and 0.239
  - 26% had a BAC between 0.16 and 0.199

### Significant Statistics and Findings (continued)

- **6.93% of all persons arrested for driving under the influence (DUI) were under the age of 21.**
- **Juveniles accounted for 1.8% of the arrests statewide.**
  - It should be noted that the data in this report does not represent a complete accounting of juvenile arrests as these arrests often do not result in detention in a county facility.
- **48.42% of the juvenile arrests involved alcohol.**
- **1.15% of the juvenile arrests involved methamphetamine.**
- **15.19% of the juvenile arrests involved “other” drugs.**
- **389 minors arrested for alcohol-related offenses reported obtaining alcohol at:**
  - Party – 37.28%
  - Home – 28.28%
  - Bar – 19.79%
  - Liquor Store – 14.40%
  - Drive-up – <1%

### PROJECT DESIGN AND IMPLEMENTATION

The Wyoming Association of Sheriffs and Chiefs of Police contracted with Johnson and Associates, a Wyoming based management consulting firm, to manage and staff this project – to create the master database, to collect and input data, to make presentations to select groups and to author the final report. The Association had previously contracted with Johnson and Associates to manage and staff the previous projects in 2005, 2006, 2007, 2008 and to conduct a three-year trends analysis in 2009.

A task force comprised of administrators and detention facility personnel from each of the county law enforcement agencies involved in the initial data collection efforts in 2005 determined the scope and intent of the project and provided specific direction for its implementation. In the following years, all law enforcement and detention facility administrators in the state were involved in deciding the appropriate fields for collection of data, selecting the subject areas that would be targeted for analysis and refining the process and procedures for collecting the information.

A supply of reporting forms and self-addressed stamped envelopes were provided to all detention facilities in the state - along with an instruction sheet for processing the completed reporting forms. In addition, all detention facility personnel who were assigned the responsibility to oversee their agencies' data collection were provided individual orientations. All completed reporting forms were submitted to Johnson and Associates for data entry on a weekly basis.

The master database for this project was created using Microsoft Access in a manner that will allow “harvesting” of additional information in the future should a need or particular area of interest arise. The data in this report is presented by “county” and by “department,” by actual numbers and percentages, and by various categories of interest. The information was assembled in this manner in order to assist law enforcement administrators, as well as community leaders, to better analyze the information and to facilitate follow-up inquiries of notable concerns.

### DATA COLLECTION

A one-page reporting form consisting of fill-in or checked boxes was constructed and refined during the course of this project. It is estimated that the form requires the booking and/or arresting officer two-to-three minutes to fill out during the book-in process. Specific information that was collected during the book-in process include: type of offense, whether alcohol was involved; whether drugs were involved; location of last consumption and point of sale; known blood alcohol content levels for arrests involving public intoxication, driving under the influence and minors in possession; and demographic information. (Please refer to page 44 for a sample of the reporting form)



### Data Collection (continued)

A total of 18,946 reporting forms were submitted by the twenty-three county detention facilities and the Fremont County Alcohol Crisis Center during the twelve-month data collection period January 1 through December 31, 2010. Although officers were instructed to complete a form for every person booked into the detention facility, they did not always do so. Only “field” arrests resulting in a person being booked into a detention facility have been tabulated – these reported “field” arrests totaled 15,914.

### DATA /STATISTICS

All information contained in the reporting forms that were submitted by the participating counties was entered into a master data base by week and by month. This information was subsequently assembled by category, by county, and by department in order to facilitate appropriate comparisons and further analysis.

A detailed breakdown of information for each county is available in a separate Supplemental Report.<sup>4</sup> A sample of the county statistics is included in this report. Natrona County was selected as the sample to be included as this county generated the greatest number of arrest statistics.

The alcohol-related arrest data in this report is presented in a series of tables and graphs:

- ❖ Tables – Number of Arrests and Percentages
- ❖ Pie Chart – Methamphetamine, Alcohol and Other Drugs
- ❖ Tables – Felony/Misdemeanor Arrests Involving Alcohol
  - Alcohol Involvement by Category of Arrest
- ❖ Bar Graphs – Alcohol Arrests Percentages, BAC
- ❖ Pie Graphs – DUI, BAC, Traffic Crash Statistics
- ❖ Tables and Bar Graphs – Juvenile Statistics
- ❖ Pie Graph – Juvenile Demographics, Where Minors Obtain Alcohol
- ❖ Table – Natrona County Statistics (Sample County Statistics)
- ❖ Table – Total reports compared to Actual Custodial Arrests

---

<sup>4</sup> A PDF of this Supplemental Report can be downloaded from the following websites: <http://wascop.com> and <http://jandaconsulting.com>

# **Statewide Arrests** **January 1, 2010 - December 31, 2010**

## **Numbers by Department**

County	Total Offenses	Misde- meanor	Felony	Domestic Violence	Resist Arrest	Assault	Public Intox**	Alcohol Involved	Drugs Involved
Statewide	18,946	15,332	1,376	1,082	384	629	4,398	13,646	1,891
Albany	877	805	39	46	40	15	138	734	82
Big Horn	132	122	10	17	10	17	12	103	19
Campbell	1,659	1,443	128	137	21	65	219	1,307	160
Carbon	567	462	98	18	11	68	13	292	136
Converse	491	388	51	32	18	29	20	322	95
Crook	83	74	3	9	7	6	3	79	5
FCACC	2,593	1,592	1	5		1	1,620	2,453	8
Fremont	2,294	1,806	92	74	101	81	795	1,881	97
Goshen	249	218	25	14	12	18	37	176	15
Hot Springs	64	49	7	8	1	4	6	44	8
Johnson	229	181	32	21	4	12	23	112	49
Laramie	1,851	1,467	197	232	48	59	244	1,222	169
Lincoln	278	242	22	23	2	24	15	188	48
Natrona	2,641	2,183	215	120	40	59	520	1,602	272
Niobrara	52	37	4	8	4	5	3	34	6
Park	648	450	94	45	14	22	47	369	66
Platte	101	90	4	11	2	5	3	73	23
Sheridan	603	499	56	41	14	18	70	452	74
Sublette	258	228	11	15	3	5	33	181	33
Sweetwater	2,062	1,921	200	126	14	71	373	1,165	410
Teton	515	464	28	16	4	6	138	412	27
Uinta	444	398	32	43	9	19	44	260	46
Washakie	188	155	22	15	5	16	20	134	37
Weston	67	58	5	6		4	2	51	6

## **Percents by Department \***

County	Total Offenses	Misde- meanor	Felony	Domestic Violence	Resist Arrest	Assault	Public Intox**	Alcohol Involved	Drugs Involved
Statewide	18,946	80.92%	7.26%	5.71%	2.03%	3.32%	16.99%	72.03%	9.98%
Albany	877	91.79%	4.45%	5.25%	4.56%	1.71%	15.74%	83.69%	9.35%
Big Horn	132	92.42%	7.58%	12.88%	7.58%	12.88%	9.09%	78.03%	14.39%
Campbell	1,659	86.98%	7.72%	8.26%	1.27%	3.92%	13.20%	78.78%	9.64%
Carbon	567	81.48%	17.28%	3.17%	1.94%	11.99%	2.29%	51.50%	23.99%
Converse	491	79.02%	10.39%	6.52%	3.67%	5.91%	4.07%	65.58%	19.35%
Crook	83	89.16%	3.61%	10.84%	8.43%	7.23%	3.61%	95.18%	6.02%
FCACC	2,593	61.40%	0.04%	0.19%	0.00%	0.04%	62.48%	94.60%	0.31%
Fremont	2,294	78.73%	4.01%	3.23%	4.40%	3.53%	34.66%	82.00%	4.23%
Goshen	249	87.55%	10.04%	5.62%	4.82%	7.23%	14.86%	70.68%	6.02%
Hot Springs	64	76.56%	10.94%	12.50%	1.56%	6.25%	9.38%	68.75%	12.50%
Johnson	229	79.04%	13.97%	9.17%	1.75%	5.24%	10.04%	48.91%	21.40%
Laramie	1,851	79.25%	10.64%	12.53%	2.59%	3.19%	13.18%	66.02%	9.13%
Lincoln	278	87.05%	7.91%	8.27%	0.72%	8.63%	5.40%	67.63%	17.27%
Natrona	2,641	82.66%	8.14%	4.54%	1.51%	2.23%	19.69%	60.66%	10.30%
Niobrara	52	71.15%	7.69%	15.38%	7.69%	9.62%	5.77%	65.38%	11.54%
Park	648	69.44%	14.51%	6.94%	2.16%	3.40%	7.25%	56.94%	10.19%
Platte	101	89.11%	3.96%	10.89%	1.98%	4.95%	2.97%	72.28%	22.77%
Sheridan	603	82.75%	9.29%	6.80%	2.32%	2.99%	11.61%	74.96%	12.27%
Sublette	258	88.37%	4.26%	5.81%	1.16%	1.94%	12.79%	70.16%	12.79%
Sweetwater	2,062	93.16%	9.70%	6.11%	0.68%	3.44%	18.09%	56.50%	19.88%
Teton	515	90.10%	5.44%	3.11%	0.78%	1.17%	26.80%	80.00%	5.24%
Uinta	444	89.64%	7.21%	9.68%	2.03%	4.28%	9.91%	58.56%	10.36%
Washakie	188	82.45%	11.70%	7.98%	2.66%	8.51%	10.64%	71.28%	19.68%
Weston	67	86.57%	7.46%	8.96%	0.00%	5.97%	2.99%	76.12%	8.96%

\* Total percents may not equal 100 due to lack of information, or a single arrest involving multiple crimes.

\*\* Total percent of Public Intox arrests do not include FCACC.

# **Statewide Arrests - Demographics** **January 1, 2010 - December 31, 2010**

## **Numbers by Department**

County	Total Offenses	Misdemeanor	Felony	Residency			Female	Male	Unknown Gender	Average Age
				In County	In-State Visitor	Out of State				
Statewide	18,946	15,332	1,376	14,734	1,079	1,923	3,956	14,569	421	34.10
Albany	877	805	39	599	126	130	142	712	23	28.34
Big Horn	132	122	10	97	10	17	24	103	5	35.55
Campbell	1,659	1,443	128	1,284	87	203	365	1,241	53	33.50
Carbon	567	462	98	328	68	159	126	418	23	33.13
Converse	491	388	51	303	69	81	112	369	10	30.97
Crook	83	74	3	36	34	7	7	75	1	37.99
FCACC	2,593	1,592	1	2,468	38	49	456	2,084	53	40.44
Fremont	2,294	1,806	92	1,939	42	55	557	1,669	68	34.14
Goshen	249	218	25	174	13	51	54	194	1	32.53
Hot Springs	64	49	7	43	14	4	12	52	0	37.61
Johnson	229	181	32	128	41	48	62	166	1	33.81
Laramie	1,851	1,467	197	1,479	56	178	313	1,512	26	34.30
Lincoln	278	242	22	158	36	75	51	220	7	34.81
Natrona	2,641	2,183	215	2,105	130	174	593	1,950	98	32.97
Niobrara	52	37	4	29	3	10	12	37	3	33.15
Park	648	450	94	506	45	49	155	481	12	31.58
Platte	101	90	4	63	7	26	23	77	1	33.83
Sheridan	603	499	56	432	42	75	138	454	11	34.31
Sublette	258	228	11	89	21	35	44	207	7	32.81
Sweetwater	2,062	1,921	200	1,719	89	253	488	1,574	0	31.51
Teton	515	464	28	282	38	114	89	414	12	33.23
Uinta	444	398	32	291	39	104	90	350	4	32.88
Washakie	188	155	22	133	24	18	33	154	1	33.57
Weston	67	58	5	49	7	8	10	56	1	34.49

## **Percents by Department \***

County	Total Offenses	Misdemeanor	Felony	Residency			Female	Male	Unkown Gender
				In County	In-State Visitor	Out of State			
Statewide	18,946	80.92%	7.26%	77.77%	5.70%	10.15%	20.88%	76.90%	2.22%
Albany	877	91.79%	4.45%	68.30%	14.37%	14.82%	16.19%	81.19%	2.62%
Big Horn	132	92.42%	7.58%	73.48%	7.58%	12.88%	18.18%	78.03%	3.79%
Campbell	1,659	86.98%	7.72%	77.40%	5.24%	12.24%	22.00%	74.80%	3.19%
Carbon	567	81.48%	17.28%	57.85%	11.99%	28.04%	22.22%	73.72%	4.06%
Converse	491	79.02%	10.39%	61.71%	14.05%	16.50%	22.81%	75.15%	2.04%
Crook	83	89.16%	3.61%	43.37%	40.96%	8.43%	8.43%	90.36%	1.20%
FCACC	2,593	61.40%	0.04%	95.18%	1.47%	1.89%	17.59%	80.37%	2.04%
Fremont	2,294	78.73%	4.01%	84.52%	1.83%	2.40%	24.28%	72.76%	2.96%
Goshen	249	87.55%	10.04%	69.88%	5.22%	20.48%	21.69%	77.91%	0.40%
Hot Springs	64	76.56%	10.94%	67.19%	21.88%	6.25%	18.75%	81.25%	0.00%
Johnson	229	79.04%	13.97%	55.90%	17.90%	20.96%	27.07%	72.49%	0.44%
Laramie	1,851	79.25%	10.64%	79.90%	3.03%	9.62%	16.91%	81.69%	1.40%
Lincoln	278	87.05%	7.91%	56.83%	12.95%	26.98%	18.35%	79.14%	2.52%
Natrona	2,641	82.66%	8.14%	79.70%	4.92%	6.59%	22.45%	73.84%	3.71%
Niobrara	52	71.15%	7.69%	55.77%	5.77%	19.23%	23.08%	71.15%	5.77%
Park	648	69.44%	14.51%	78.09%	6.94%	7.56%	23.92%	74.23%	1.85%
Platte	101	89.11%	3.96%	62.38%	6.93%	25.74%	22.77%	76.24%	0.99%
Sheridan	603	82.75%	9.29%	71.64%	6.97%	12.44%	22.89%	75.29%	1.82%
Sublette	258	88.37%	4.26%	34.50%	8.14%	13.57%	17.05%	80.23%	2.71%
Sweetwater	2,062	93.16%	9.70%	83.37%	4.32%	12.27%	23.67%	76.33%	0.00%
Teton	515	90.10%	5.44%	54.76%	7.38%	22.14%	17.28%	80.39%	2.33%
Uinta	444	89.64%	7.21%	65.54%	8.78%	23.42%	20.27%	78.83%	0.90%
Washakie	188	82.45%	11.70%	70.74%	12.77%	9.57%	17.55%	81.91%	0.53%
Weston	67	86.57%	7.46%	73.13%	10.45%	11.94%	14.93%	83.58%	1.49%

\* Total percents may not equal 100 due to lack of information, or a single arrest involving multiple crimes.

## Alcohol and Drug Involvement

### Total Offenses

County	Total	Number Involving	Percent Involving	Number Involving	Percent Involving
Department	Offenses	Alcohol	Alcohol	Drugs	Drugs
Statewide	18,946	13,646	72.03%	1,891	9.50%
Albany	877	734	83.69%	82	8.00%
Big Horn	132	103	78.03%	19	9.60%
Campbell	1,659	1,307	78.78%	160	8.56%
Carbon	567	292	51.50%	136	21.35%
Converse	491	322	65.58%	95	18.70%
Crook	83	79	95.18%	5	6.80%
FCACC	2,593	2,453	94.60%	8	0.39%
Fremont	2,294	1,881	82.00%	97	4.48%
Goshen	249	176	70.68%	15	10.50%
Hot Springs	64	44	68.75%	8	6.00%
Johnson	229	112	48.91%	49	11.67%
Laramie	1,851	1,222	66.02%	169	10.64%
Lincoln	278	188	67.63%	48	16.67%
Natrona	2,641	1,602	60.66%	272	9.80%
Niobrara	52	34	65.38%	6	4.41%
Park	648	369	56.94%	66	9.76%
Platte	101	73	72.28%	23	17.91%
Sheridan	603	452	74.96%	74	9.08%
Sublette	258	181	70.16%	33	10.16%
Sweetwater	2,062	1,165	56.50%	410	17.91%
Teton	515	412	80.00%	27	6.81%
Uinta	444	260	58.56%	46	11.03%
Washakie	188	134	71.28%	37	18.34%
Weston	67	51	76.12%	6	6.58%

### Felony Offenses

County	Felony	Number Involving	Percent Involving	Number Involving	Percent Involving
Department	Offenses	Alcohol	Alcohol	Drugs	Drugs
Statewide	1,376	342	24.85%	385	27.98%
Albany	39	9	23.08%	5	12.82%
Big Horn	10	6	60.00%	4	40.00%
Campbell	128	41	32.03%	29	22.66%
Carbon	98	17	17.35%	51	52.04%
Converse	51	9	17.65%	18	35.29%
Crook	3	2	66.67%		
FCACC	1	1	100.00%		
Fremont	92	35	38.04%	12	13.04%
Goshen	25	3	12.00%	5	20.00%
Hot Springs	7	3	42.86%	1	14.29%
Johnson	32	5	15.63%	16	50.00%
Laramie	197	40	20.30%	44	22.34%
Lincoln	22	6	27.27%	9	40.91%
Natrona	215	58	26.98%	64	29.77%
Niobrara	4	1	25.00%	3	75.00%
Park	94	19	20.21%	14	14.89%
Platte	4	2	50.00%		
Sheridan	56	14	25.00%	19	33.93%
Sublette	11	4	36.36%	1	9.09%
Sweetwater	200	45	22.50%	72	36.00%
Teton	28	7	25.00%	2	7.14%
Uinta	32	7	21.88%	8	25.00%
Washakie	22	7	31.82%	7	31.82%
Weston	5	1	20.00%	1	20.00%

### Misdemeanor Offenses

County	Misdemeanor	Number Involving	Percent Involving	Number Involving	Percent Involving
Department	Offenses	Alcohol	Alcohol	Drugs	Drugs
Statewide	15,332	11,533	75.22%	1,466	9.56%
Albany	805	700	86.96%	70	8.70%
Big Horn	122	97	79.51%	17	13.93%
Campbell	1,443	1,198	83.02%	128	8.87%
Carbon	462	263	56.93%	90	19.48%
Converse	388	279	71.91%	68	17.53%
Crook	74	71	95.95%	5	6.76%
FCACC	1,592	1,587	99.69%	3	0.19%
Fremont	1,806	1,532	84.83%	79	4.37%
Goshen	218	165	75.69%	11	5.05%
Hot Springs	49	34	69.39%	8	16.33%
Johnson	181	97	53.59%	33	18.23%
Laramie	1,467	1,053	71.78%	106	7.23%
Lincoln	242	172	71.07%	38	15.70%
Natrona	2,183	1,415	64.82%	185	8.47%
Niobrara	37	26	70.27%	3	8.11%
Park	450	295	65.56%	43	9.56%
Platte	90	68	75.56%	23	25.56%
Sheridan	499	395	79.16%	48	9.62%
Sublette	228	165	72.37%	28	12.28%
Sweetwater	1,921	1,124	58.51%	384	19.99%
Teton	464	386	83.19%	26	5.60%
Uinta	398	244	61.31%	38	9.55%
Washakie	155	119	76.77%	29	18.71%
Weston	58	48	82.76%	3	5.17%

### Domestic Violence

County	Domestic Violence	Number Involving	Percent Involving	Number Involving	Percent Involving
Department	Offenses	Alcohol	Alcohol	Drugs	Drugs
Statewide	1,082	597	55.18%	36	3.33%
Albany	46	32	69.57%		
Big Horn	17	8	47.06%	1	5.88%
Campbell	137	74	54.01%	2	1.46%
Carbon	18	13	72.22%	3	16.67%
Converse	32	22	68.75%	1	3.13%
Crook	9	7	77.78%		
FCACC	5	5	100.00%		
Fremont	74	56	75.68%	5	6.76%
Goshen	14	6	42.86%		
Hot Springs	8	3	37.50%		
Johnson	21	11	52.38%	2	9.52%
Laramie	232	111	47.84%	7	3.02%
Lincoln	23	13	56.52%	1	4.35%
Natrona	120	61	50.83%	7	5.83%
Niobrara	8	6	75.00%		
Park	45	27	60.00%	1	2.22%
Platte	11	7	63.64%		
Sheridan	41	24	58.54%	3	7.32%
Sublette	15	4	26.67%		
Sweetwater	126	60	47.62%	2	1.59%
Teton	16	8	50.00%	1	6.25%
Uinta	43	25	58.14%		
Washakie	15	11	73.33%		
Weston	6	3	50.00%		

### Resisting Arrest

County	Resisting Arrest	Number Involving	Percent Involving	Number Involving	Percent Involving
Department	Offenses	Alcohol	Alcohol	Drugs	Drugs
Statewide	384	309	80.47%	31	8.07%
Albany	40	30	75.00%	4	10.00%
Big Horn	10	5	50.00%	1	10.00%
Campbell	21	19	90.48%	1	4.76%
Carbon	11	9	81.82%	3	27.27%
Converse	18	14	77.78%		
Crook	7	7	100.00%		
FCACC					
Fremont	101	99	98.02%	8	7.92%
Goshen	12	5	41.67%		
Hot Springs	1	1	100.00%		
Johnson	4	4	100.00%		
Laramie	48	31	64.58%	2	4.17%
Lincoln	2	1	50.00%		
Natrona	40	28	70.00%	7	17.50%
Niobrara	4	2	50.00%		
Park	14	12	85.71%	1	7.14%
Platte	2	1	50.00%		
Sheridan	14	14	100.00%		
Sublette	3	1	33.33%		
Sweetwater	14	14	100.00%		
Teton	4	1	25.00%	1	25.00%
Uinta	9	8	88.89%		
Washakie	5	3	60.00%	3	60.00%
Weston					

### Assault

County	Assault	Number Involving	Percent Involving	Number Involving	Percent Involving
Department	Offenses	Alcohol	Alcohol	Drugs	Drugs
Statewide	629	361	57.39%	25	3.97%
Albany	15	10	66.67%		
Big Horn	17	12	70.59%	1	5.88%
Campbell	65	49	75.38%	3	4.62%
Carbon	68	28	41.18%	1	1.47%
Converse	29	20	68.97%		
Crook	6	4	66.67%		
FCACC	1	1	100.00%		
Fremont	81	65	80.25%	5	6.17%
Goshen	18	6	33.33%		
Hot Springs	4	1	25.00%		
Johnson	12	6	50.00%	1	8.33%
Laramie	59	21	35.59%	1	1.69%
Lincoln	24	12	50.00%	4	16.67%
Natrona	59	32	54.24%	5	8.47%
Niobrara	5	3	60.00%		
Park	22	11	50.00%	2	9.09%
Platte	5	2	40.00%		
Sheridan	18	11	61.11%	1	5.56%
Sublette	5	3	60.00%		
Sweetwater	71	34	47.89%	1	1.41%
Teton	6	2	33.33%		
Uinta	19	16	84.21%		
Washakie	16	11	68.75%		
Weston	4	1	25.00%		

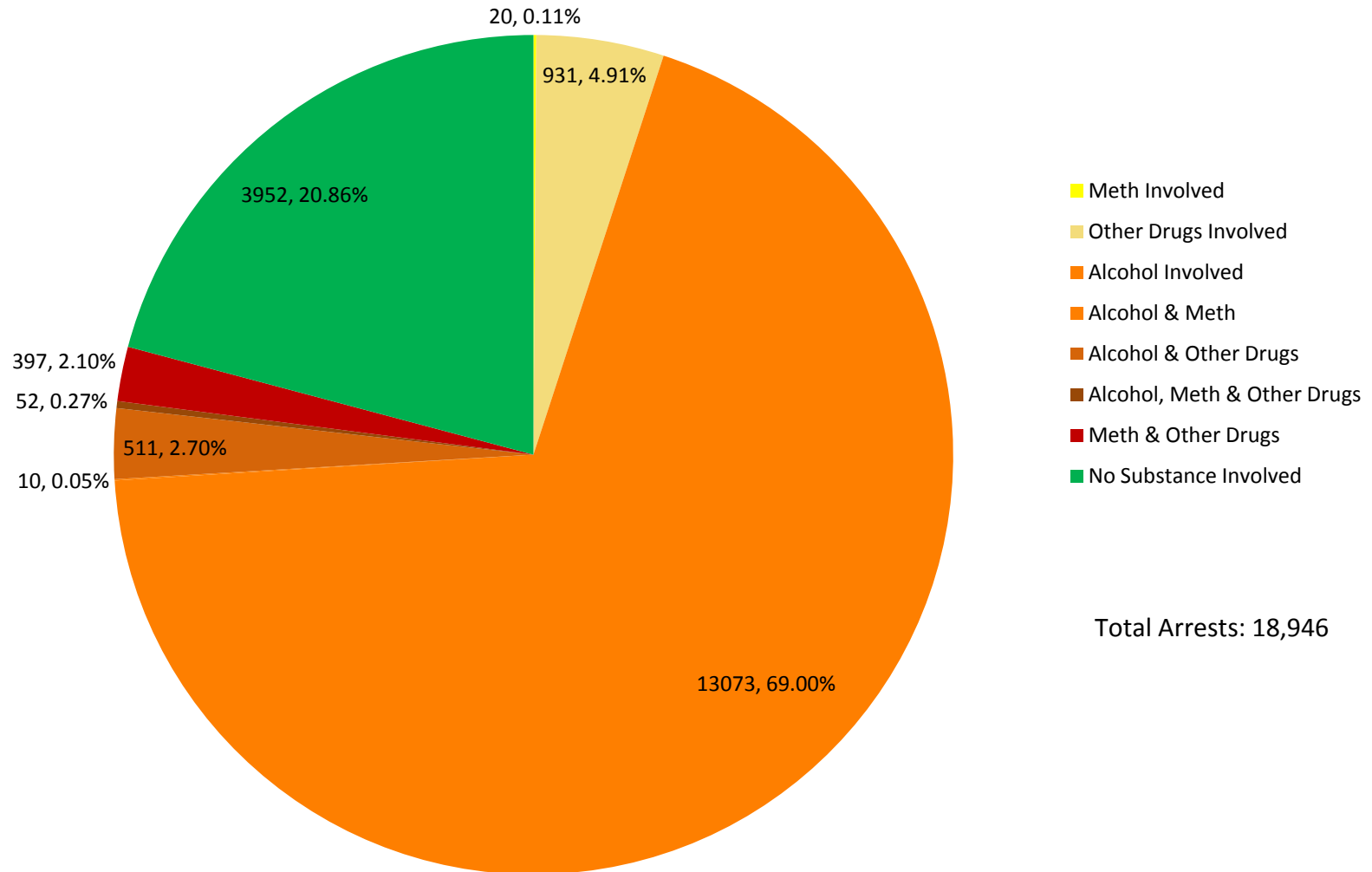
### ***Meth, Drugs & Public Intoxication***

County Department	Total Offenses	Meth Involved	% Meth of Total	Drugs Involved	% Drugs of Total	Public Intox.	% PI of Total**	Pub. Intox. Ave. BAC
Statewide	18,946	479	2.53%	1,891	9.98%	4,398	15.77%	0.2317
Albany	877	4	0.46%	82	9.35%	138	15.74%	0.2224
Big Horn	132	2	1.52%	19	14.39%	12	9.09%	0.2357
Campbell	1,659	42	2.53%	160	9.64%	219	13.20%	0.2280
Carbon	567	15	2.65%	136	23.99%	13	2.29%	0.2772
Converse	491	18	3.67%	95	19.35%	20	4.07%	0.1972
Crook	83			5	6.02%	3	3.61%	
FCACC	2,593	1	0.04%	8	0.31%	1,620	62.48%	0.2357
Fremont	2,294	14	0.61%	97	4.23%	795	34.66%	0.2427
Goshen	249		0.00%	15	6.02%	37	14.86%	0.2511
Hot Springs	64	1	1.56%	8	12.50%	6	9.38%	0.2255
Johnson	229	18	7.86%	49	21.40%	23	10.04%	0.1997
Laramie	1,851	55	2.97%	169	9.13%	244	13.18%	0.2190
Lincoln	278	15	5.40%	48	17.27%	15	5.40%	0.2018
Natrona	2,641	93	3.52%	272	10.30%	520	19.69%	0.2187
Niobrara	52		0.00%	6	11.54%	3	5.77%	
Park	648	9	1.39%	66	10.19%	47	7.25%	0.2265
Platte	101	3	2.97%	23	22.77%	3	2.97%	0.1300
Sheridan	603	17	2.82%	74	12.27%	70	11.61%	0.2001
Sublette	258	2	0.78%	33	12.79%	33	12.79%	0.2425
Sweetwater	2,062	133	6.45%	410	19.88%	373	18.09%	0.1870
Teton	515	2	0.39%	27	5.24%	138	26.80%	0.2296
Uinta	444	20	4.50%	46	10.36%	44	9.91%	0.2232
Washakie	188	15	7.98%	37	19.68%	20	10.64%	0.2676
Weston	67			6	8.96%	2		0.2100

\*\* FCACC not included in statewide PI percent.



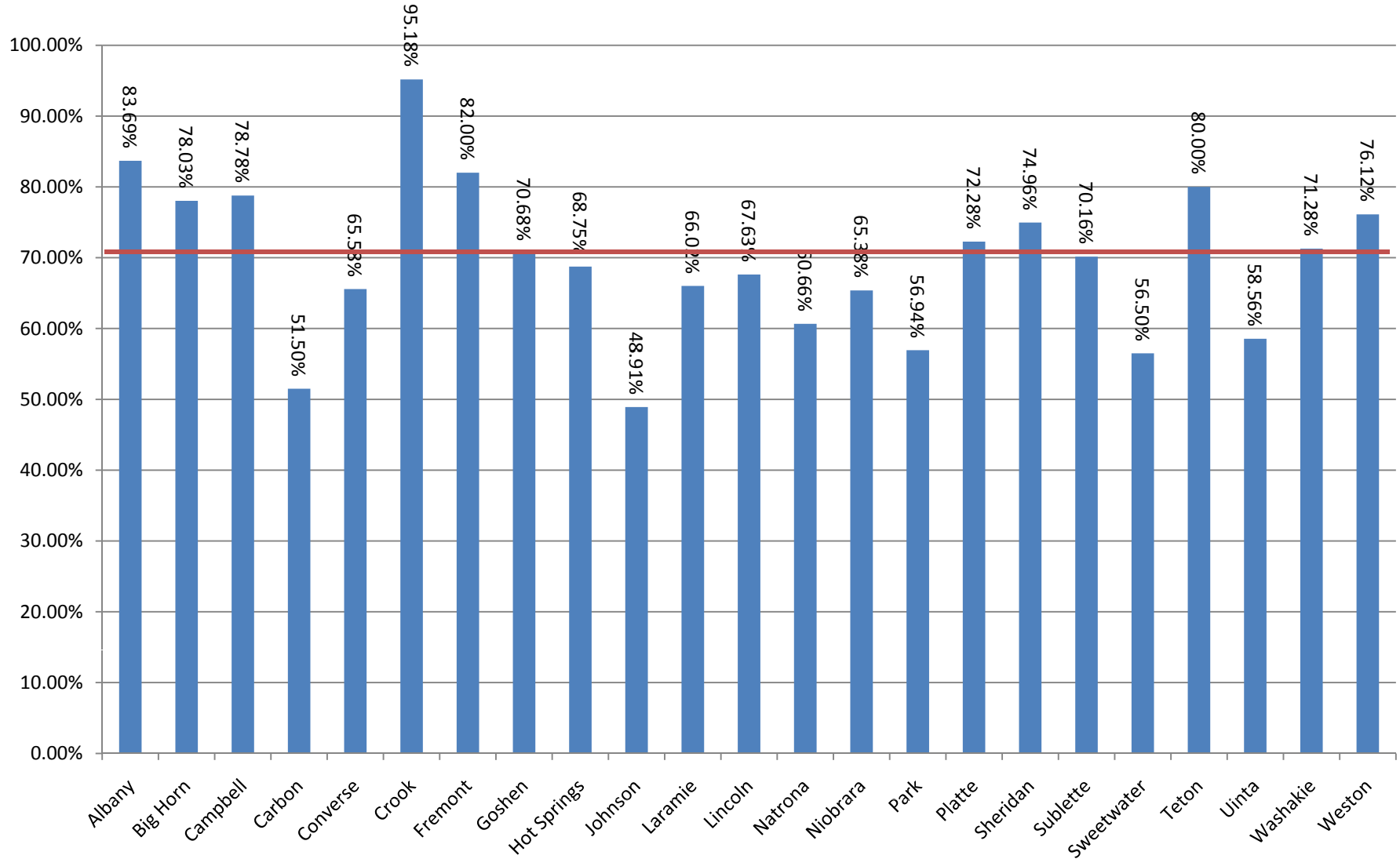
## Meth, Alcohol and Other Drugs Involved Arrests



Given: Number of Arrests, Percentage of Total Arrests

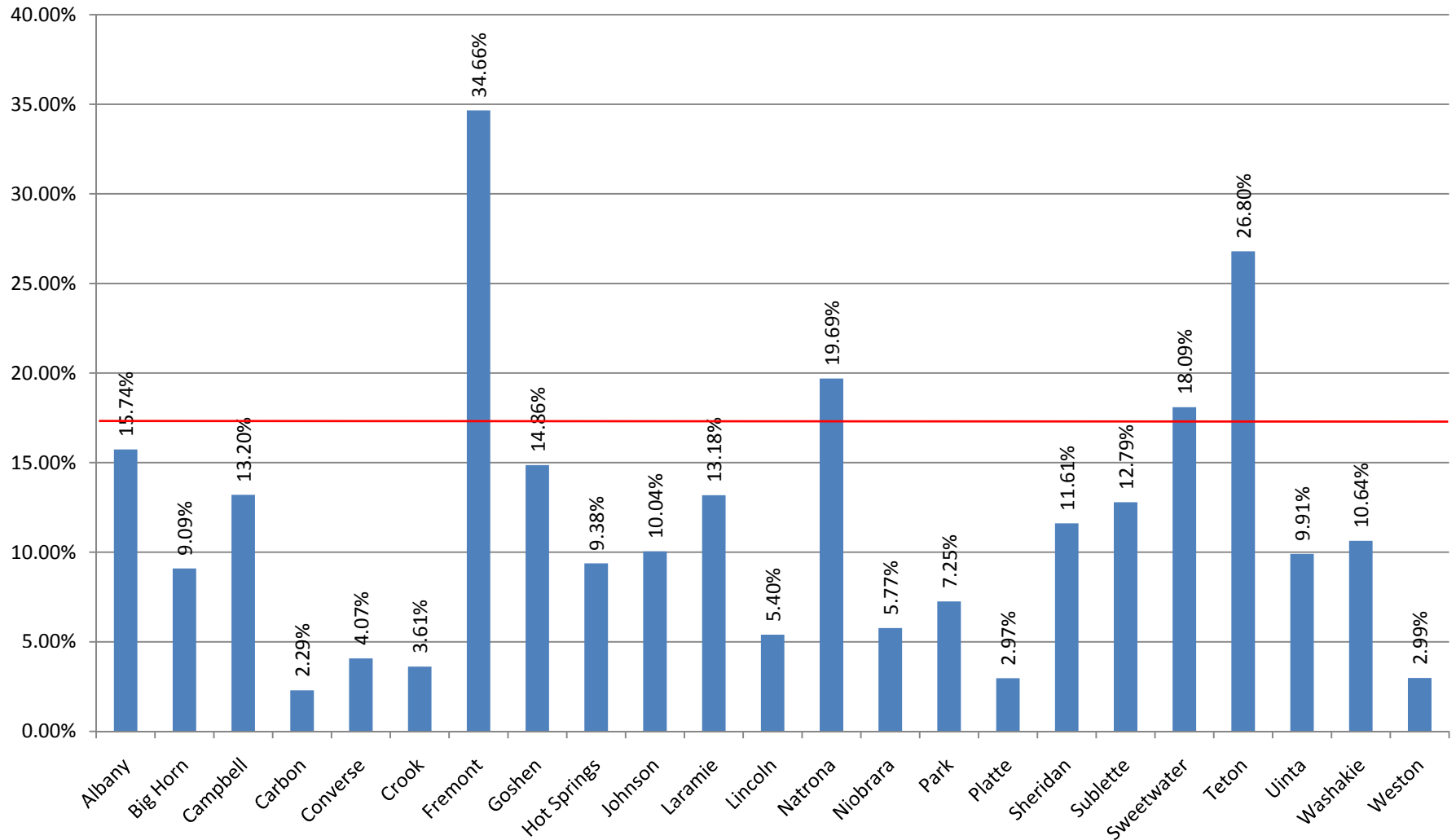
## Alcohol Involved Arrests as a Percentage of All Arrests by County

(Red line indicates statewide percent - 72.03%)



## Public Intoxication Arrests as a Percentage of All Arrests by County

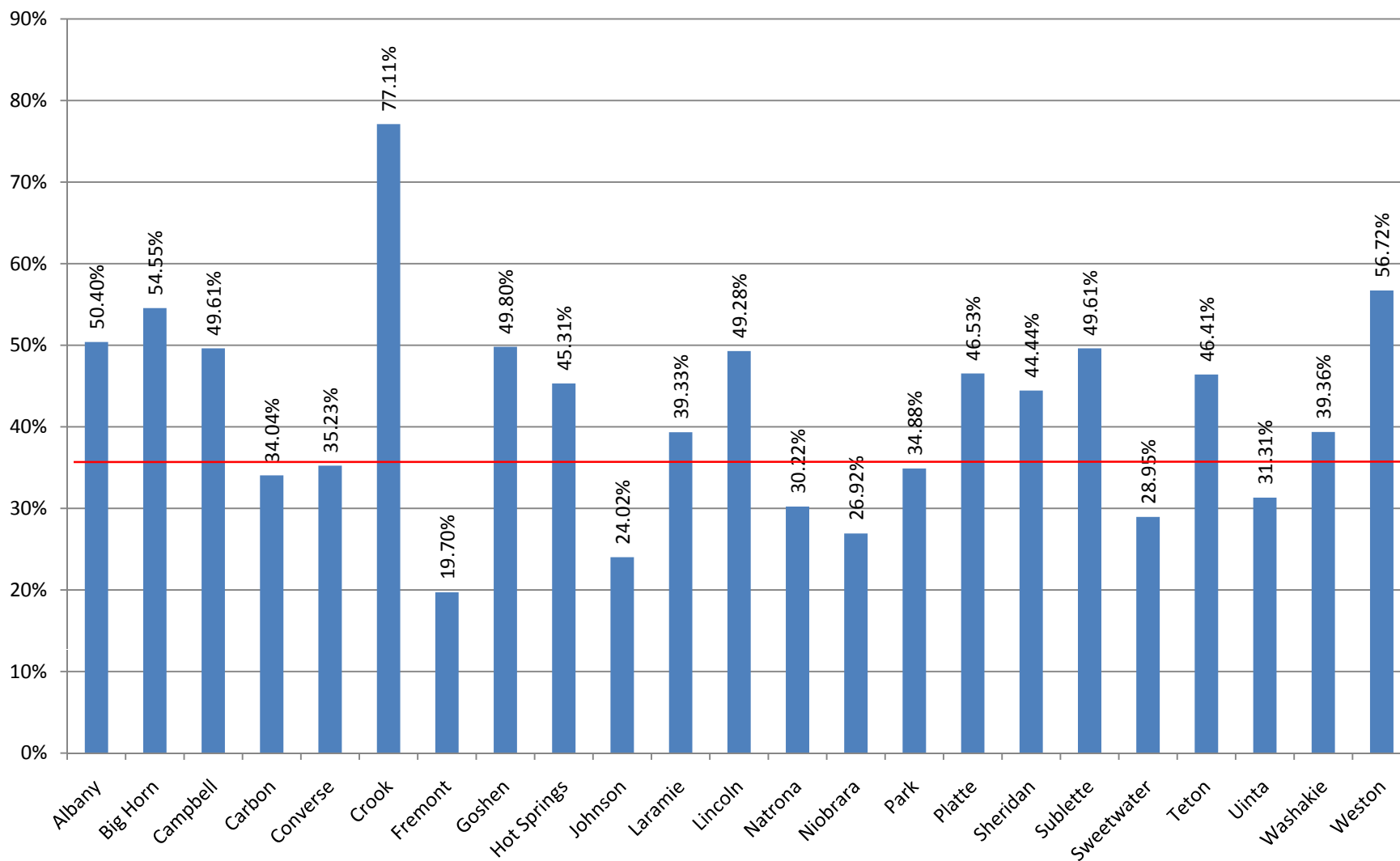
(Red line indicates statewide percent - 16.99%)



\* Excluding Fremont Alcohol Crisis Center.

## DUI Arrests as a Percentage of All Arrests by County

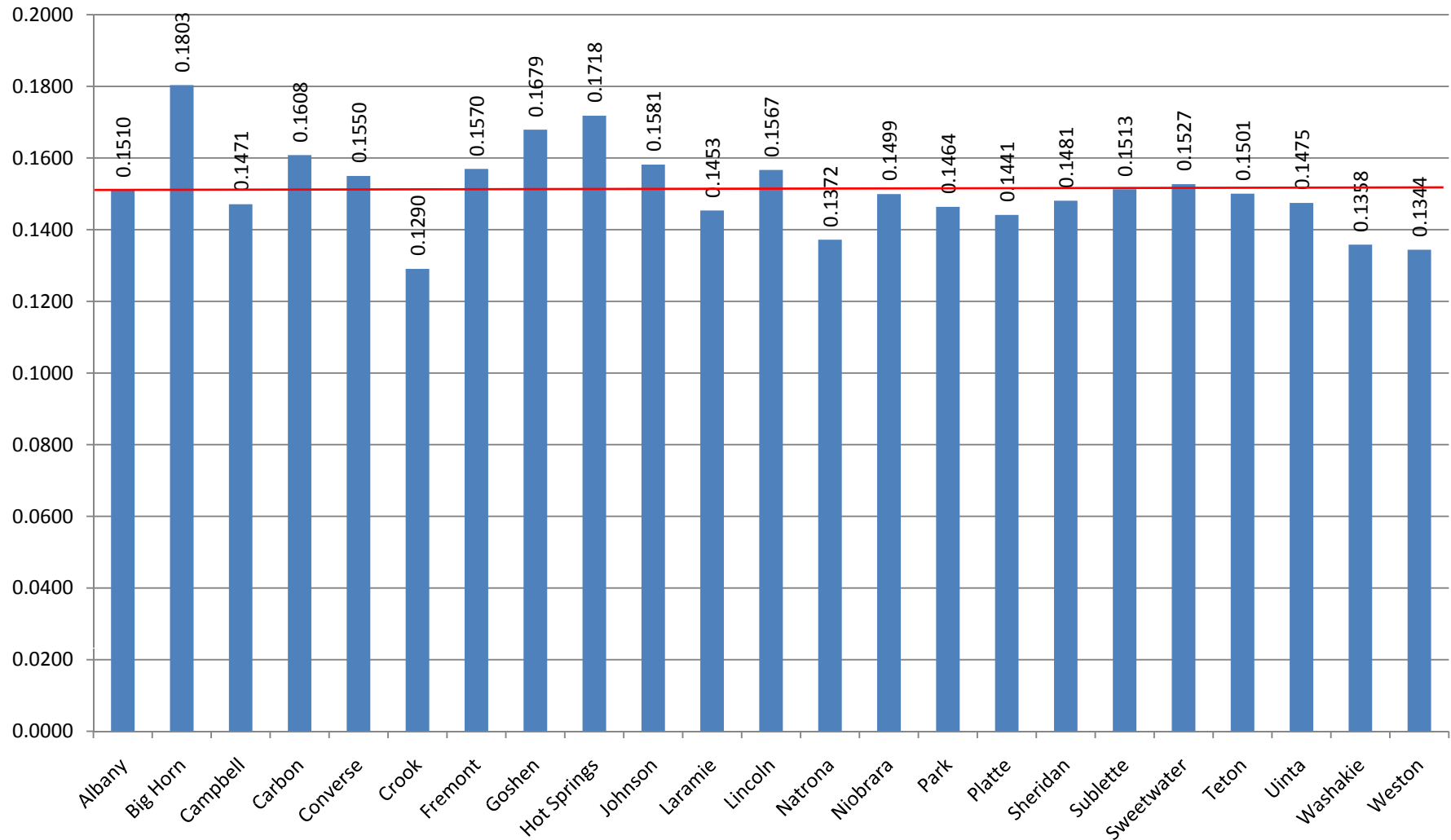
(Red line indicates statewide percent - 35.83%)



\* Excludes Fremont Alcohol Crisis Center.

## Average DUI BAC

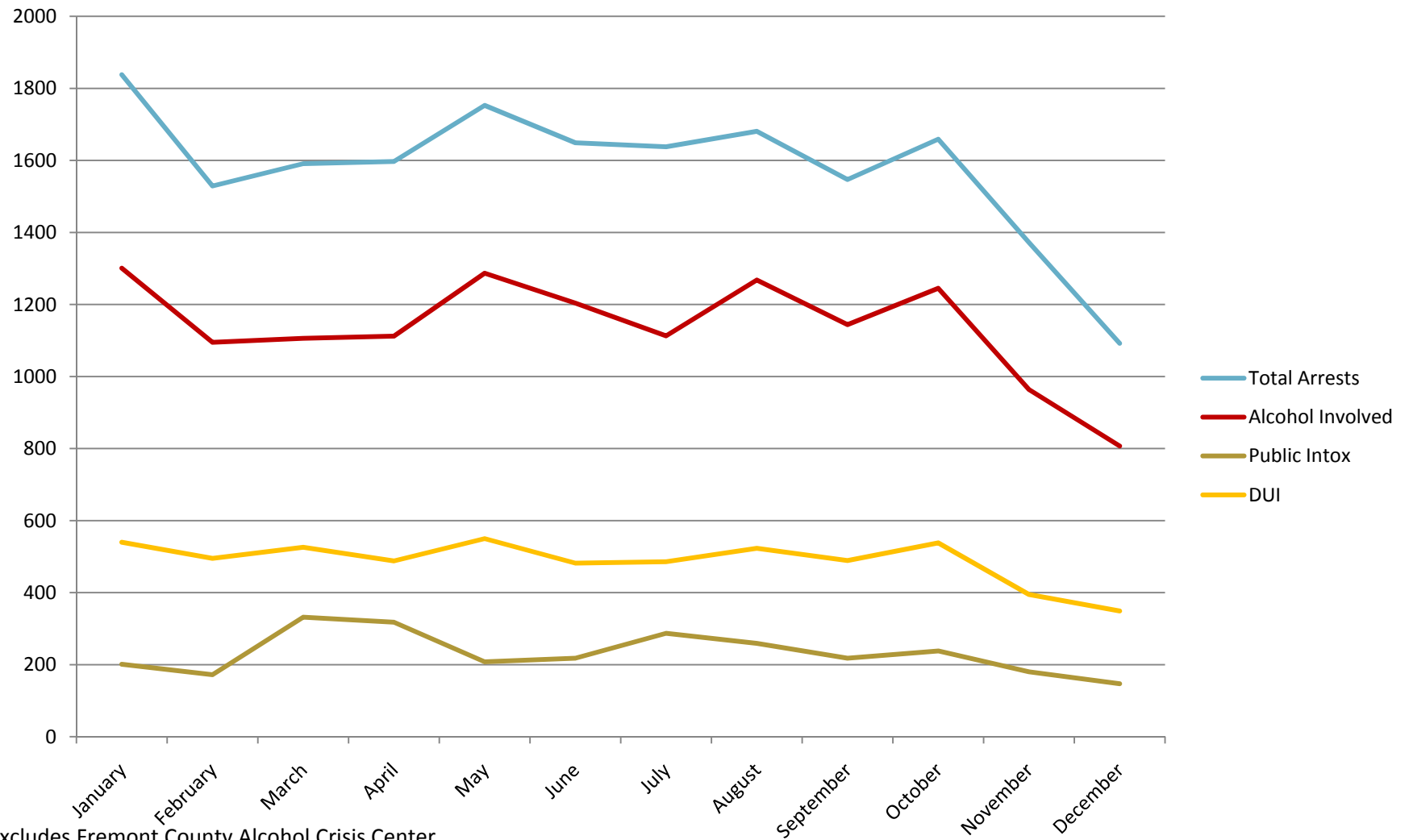
Red line indicates statewide average - 0.1525



Excludes Fremont Alcohol Crisis Center.



## Total Arrests, Alcohol Involved Arrests, DUI Arrests and Public Intoxication Arrests - Statewide January - December 2010



\* Excludes Fremont County Alcohol Crisis Center.

### ***Location of Alcohol Consumption and Point of Sale by Department***

Department	Alcohol Involved	Location of Consumption						Point of Sale					
		Home	Bar	Party	Car	Other	No Response	Home	Bar	Drive Up	Party	Liquor Store	No Response
Albany	734	100	298	73	23	30	142	57	290		51	47	180
Big Horn	103	22	34	1	12	9	11	14	33	1	2	6	16
Campbell	1,307	291	531	56	36	85	276	168	543	11	47	101	321
Carbon	292	55	96	9	14	14	39	36	85		6	23	54
Converse	322	86	106	21	37	14	37	30	109	3	7	22	83
Crook	79	7	25		10	25	12	5	28	1	2	13	22
FCACC	2,453	254	119	82	28	1022	937	52	126	7	23	1186	993
Fremont	1,881	364	232	53	78	302	658	112	211	7	31	384	804
Goshen	176	7	28	1		2	108	3	28		1		107
Hot Springs	44	12	13	4	5	1	5	3	14	1	1	7	6
Johnson	112	21	34	10	7	7	14	4	29		4	14	20
Laramie	1,222	272	366	48	47	126	90	152	367	5	42	157	132
Lincoln	188	28	58	7	8	23	46	14	58		1	9	71
Natrona	1,602	313	481	105	56	128	289	143	433	1	68	93	434
Niobrara	34	3	3	6	1		2	3	3		3	1	2
Park	369	96	145	25	18	22	26	50	140	5	17	22	43
Platte	73	21	20	6	7	10	5	10	20	2	5	13	14
Sheridan	452	56	146	25	7	22	155	17	146	2	12	42	169
Sublette	181	18	72	4	3	7	48	10	67		2	10	51
Sweetwater	1,165	11	105	44	60	3	936	1	108		44	1	1004
Teton	412	55	189	39	10	49	57	25	180	1	38	58	58
Uinta	260	62	89	13	20	26	37	25	93	2	5	26	73
Washakie	134	13	24	14	14	7	44	4	25	4	9	10	62
Weston	51	10	11	1	2	3	21	4	16		1	4	22
Statewide Totals	13,646	2,177	3,225	647	503	1,937	3,995	942	3,152	53	422	2,249	4741

### ***DUI Arrests***

County Department	Total Offenses	DUI Offenses	% DUI Of Total*	Ave. BAC	DUI Involving Drugs	% DUI Involving Drugs
Statewide	18,946	5,862	35.83%	0.1525	492	2.60%
Albany	877	442	50.40%	0.1510	44	5.02%
Big Horn	132	72	54.55%	0.1803	11	8.33%
Campbell	1,659	823	49.61%	0.1471	44	2.65%
Carbon	567	193	34.04%	0.1608	30	5.29%
Converse	491	173	35.23%	0.1550	27	5.50%
Crook	83	64	77.11%	0.1290	5	6.02%
FCACC	2,593	1	0.04%	0.1592	1	0.04%
Fremont	2,294	453	19.75%	0.1570	23	1.00%
Goshen	249	124	49.80%	0.1679	5	2.01%
Hot Springs	64	29	45.31%	0.1718	2	3.13%
Johnson	229	55	24.02%	0.1581	11	4.80%
Laramie	1,851	728	39.33%	0.1453	46	2.49%
Lincoln	278	137	49.28%	0.1567	17	6.12%
Natrona	2,641	798	30.22%	0.1372	78	2.95%
Niobrara	52	14	26.92%	0.1499	1	1.92%
Park	648	226	34.88%	0.1464	24	3.70%
Platte	101	47	46.53%	0.1441	12	11.88%
Sheridan	603	268	44.44%	0.1481	22	3.65%
Sublette	258	128	49.61%	0.1513	8	3.10%
Sweetwater	2,062	597	28.95%	0.1527	41	1.99%
Teton	515	239	46.41%	0.1501	13	2.52%
Uinta	444	139	31.31%	0.1475	16	3.60%
Washakie	188	74	39.36%	0.1358	8	4.26%
Weston	67	38	56.72%	0.1344	3	4.48%

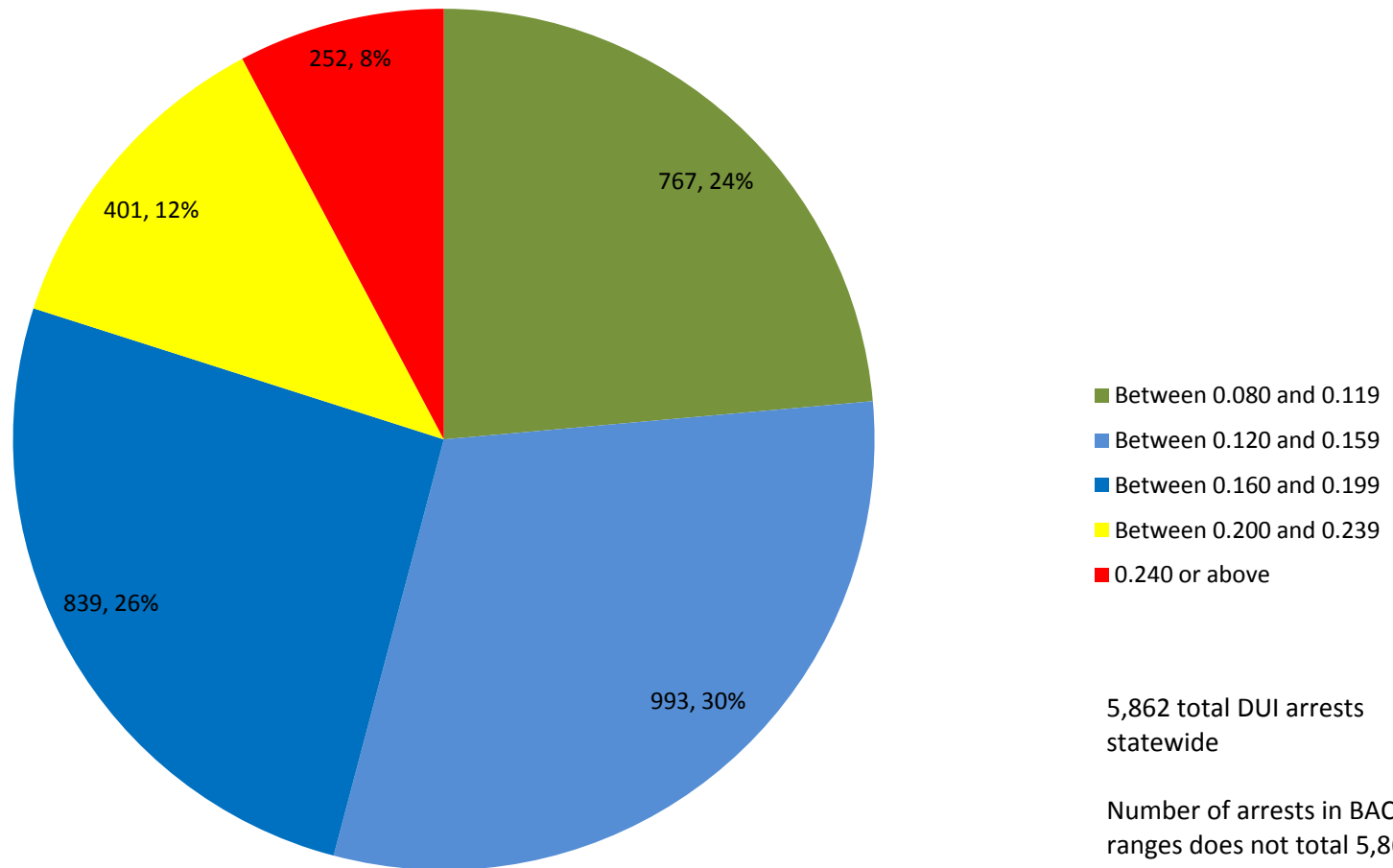
\* FCACC not included in DUI as percent of the total.

### ***Traffic Crashes***

County Department	Traffic Crashes	Alcohol Involved	% Alcohol Involved	Average BAC	Drugs Involved	% Drugs Involved
Statewide	686	564	82.22%	0.1659	89	12.97%
Albany	54	48	88.89%	0.1469	5	9.26%
Big Horn	10	5	50.00%	0.1340	3	30.00%
Campbell	66	57	86.36%	0.1618	7	10.61%
Carbon	22	15	68.18%	0.1483	7	31.82%
Converse	18	16	88.89%	0.1808	2	11.11%
Crook	5	5	100.00%	0.1885	1	20.00%
FCACC	3	3	100.00%	0.2000	1	33.33%
Fremont	60	53	88.33%	0.1781	7	11.67%
Goshen	16	13	81.25%	0.1966	2	12.50%
Hot Springs	5	4	80.00%	0.2293	1	20.00%
Johnson	11	10	90.91%	0.1670		
Laramie	63	49	77.78%	0.1775	6	9.52%
Lincoln	15	14	93.33%	0.1893	2	13.33%
Natrona	142	112	78.87%	0.1680	24	16.90%
Niobrara						
Park	29	24	82.76%	0.1357	6	20.69%
Platte	6	6	100.00%	0.1925	1	16.67%
Sheridan	36	30	83.33%	0.1711	5	13.89%
Sublette	8	6	75.00%	0.1696	1	12.50%
Sweetwater	55	39	70.91%	0.1550	2	3.64%
Teton	30	27	90.00%	0.1681	2	6.67%
Uinta	25	21	84.00%	0.1704	4	16.00%
Washakie	3	3	100.00%	0.2033		
Weston	4	4	100.00%	0.1110		

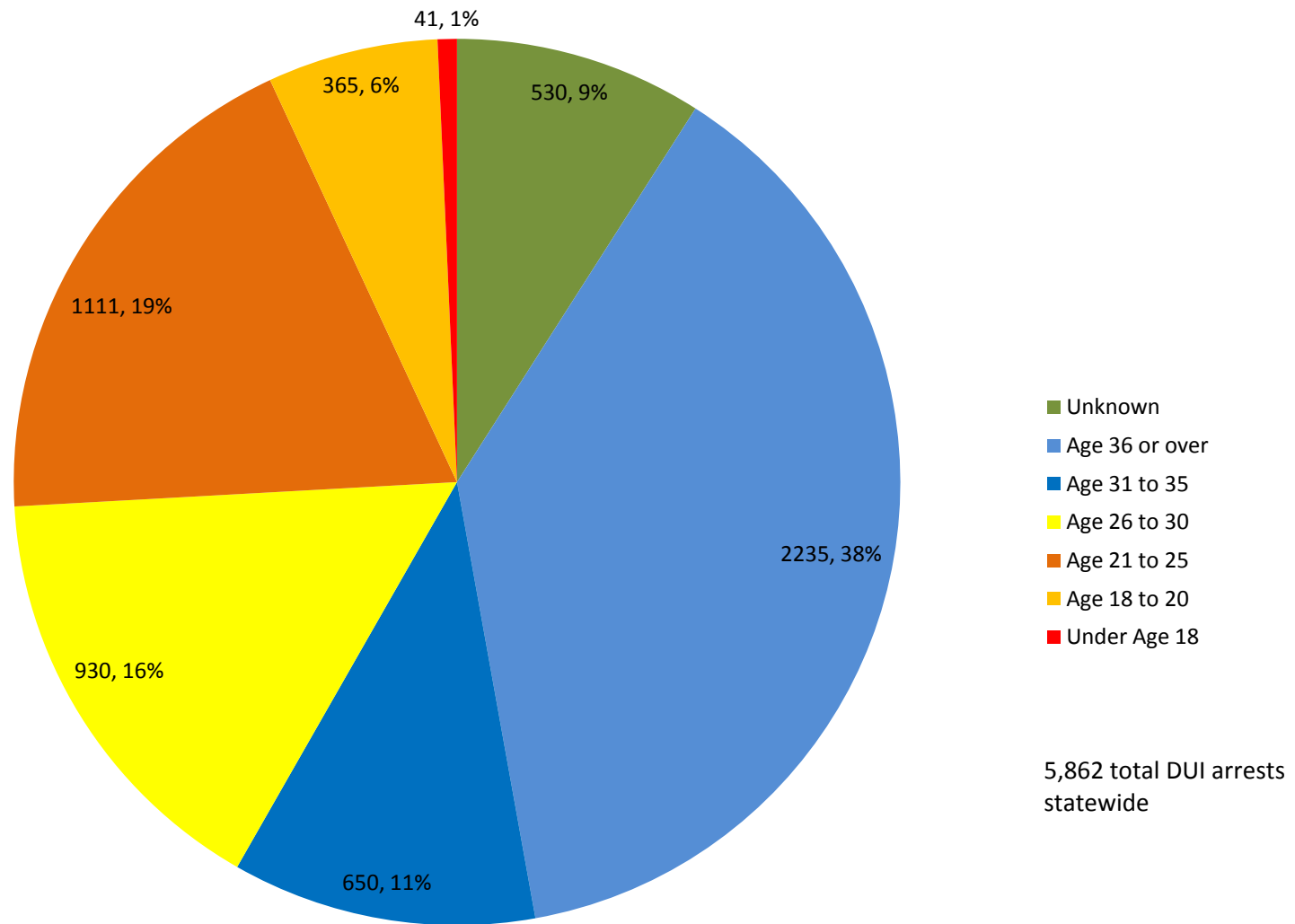
## DUI Arrests with Reported BAC in Each Range

Number of DUI Arrests with BAC in each Range



Given: Number of DUI arrests in range, percent of all DUI arrests with BAC reported

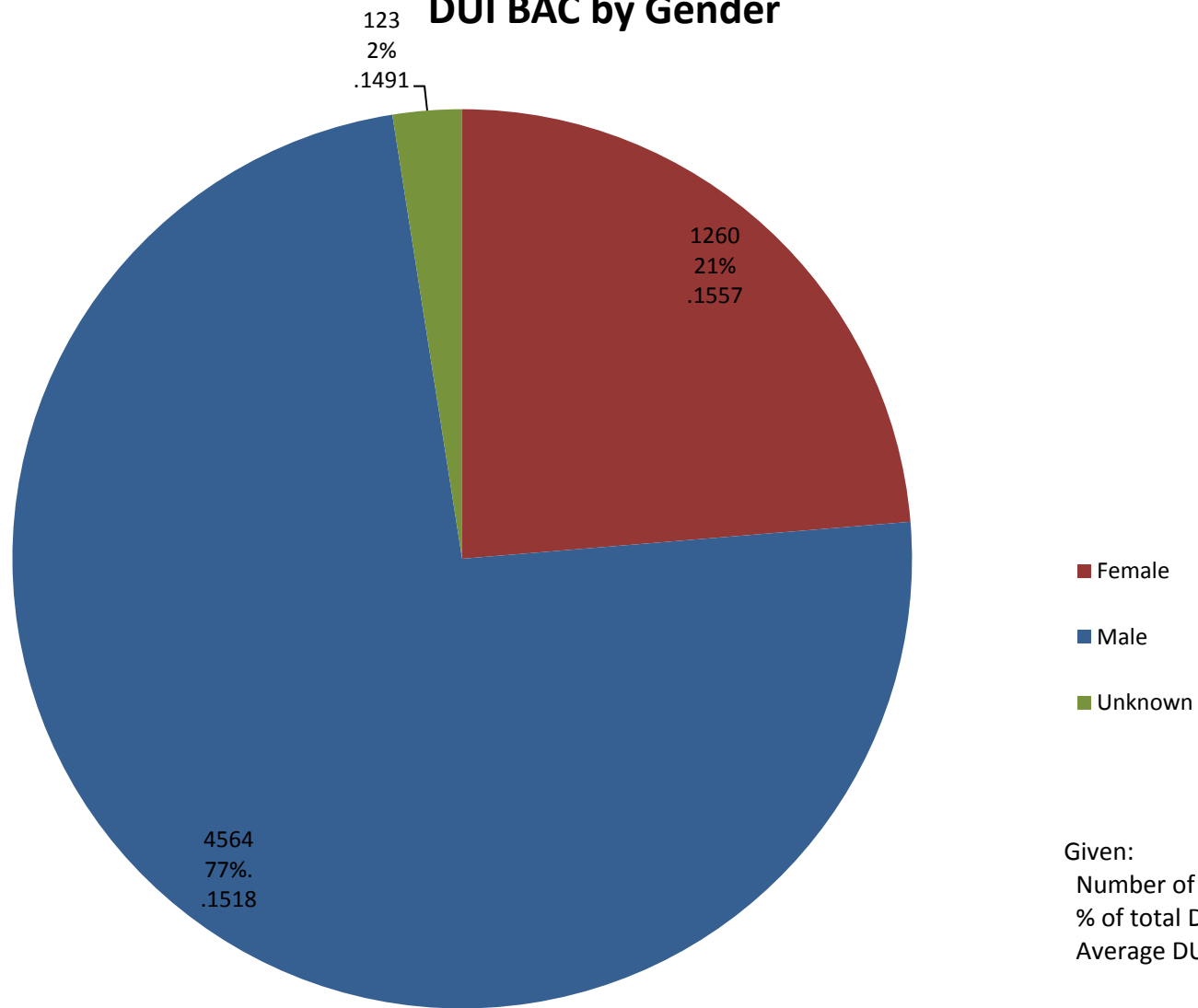
## DUI Arrests by Age



Given: Number of DUI arrests in range, percent of all DUI arrests



## DUI BAC by Gender



Given: Number of DUI arrests in range, percent of all DUI arrests

**Statewide Juvenile Arrests**  
**January 1, 2010 - December 31, 2010**

**Numbers by Department**

County	Total Offenses	Misde-meanor	Felony	Domestic Violence	Resist Arrest	Assault	Public Intox	Alcohol Involved	Drugs Involved
Statewide	349	277	55	14	21	33	32	169	53
Albany	2	2						2	
Big Horn									
Campbell	30	21	1	1	1	3		13	5
Carbon	26	12	13		1	5		4	5
Converse	22	16	5					9	3
Crook									
FCACC									
Fremont	137	124	5	5	14	16	25	96	17
Goshen	6	5	2	1	3	1		1	1
Hot Springs									
Johnson									
Laramie									
Lincoln									
Natrona	1	1							1
Niobrara									
Park	16	6	5			1		3	1
Platte	1	1		1		1		1	
Sheridan	2		2			1			
Sublette	2	2		2					
Sweetwater	99	85	19	4	2	4	7	39	19
Teton	3		3			1			
Uinta	2	2						1	1
Washakie									
Weston									

**Percents by Department \***

County	Total Offenses	Misde-meanor	Felony	Domestic Violence	Resist Arrest	Assault	Public Intox	Alcohol Involved	Drugs Involved
Statewide	349	79.37%	15.76%	4.01%	6.02%	9.46%	9.17%	48.42%	15.19%
Albany	2	100.00%	0.00%	0.00%	0.00%	0.00%	0.00%	100.00%	0.00%
Big Horn									
Campbell	30	70.00%	3.33%	3.33%	3.33%	10.00%	0.00%	43.33%	16.67%
Carbon	26	46.15%	50.00%	0.00%	3.85%	19.23%	0.00%	15.38%	19.23%
Converse	22	72.73%	22.73%	0.00%	0.00%	0.00%	0.00%	40.91%	13.64%
Crook									
FCACC									
Fremont	137	90.51%	3.65%	3.65%	10.22%	11.68%	18.25%	70.07%	12.41%
Goshen	6	83.33%	33.33%	16.67%	50.00%	16.67%	0.00%	16.67%	16.67%
Hot Springs									
Johnson									
Laramie									
Lincoln									
Natrona	1	100.00%	0.00%	0.00%	0.00%	0.00%	0.00%	0.00%	100.00%
Niobrara									
Park	16	37.50%	31.25%	0.00%	0.00%	6.25%	0.00%	18.75%	6.25%
Platte	1	100.00%	0.00%	100.00%	0.00%	100.00%	0.00%	100.00%	0.00%
Sheridan	2	0.00%	100.00%	0.00%	0.00%	50.00%	0.00%	0.00%	0.00%
Sublette	2	100.00%	0.00%	100.00%	0.00%	0.00%	0.00%	0.00%	0.00%
Sweetwater	99	85.86%	19.19%	4.04%	2.02%	4.04%	7.07%	39.39%	19.19%
Teton	3	0.00%	100.00%	0.00%	0.00%	33.33%	0.00%	0.00%	0.00%
Uinta	2	100.00%	0.00%	0.00%	0.00%	0.00%	0.00%	50.00%	50.00%
Washakie									
Weston									

\* Total percents may not equal 100 due to lack of information, or a single arrest involving multiple crimes.

**Statewide Juvenile Arrests - Demographics**  
**January 1, 2010 - December 31, 2010**

**Numbers by Department**

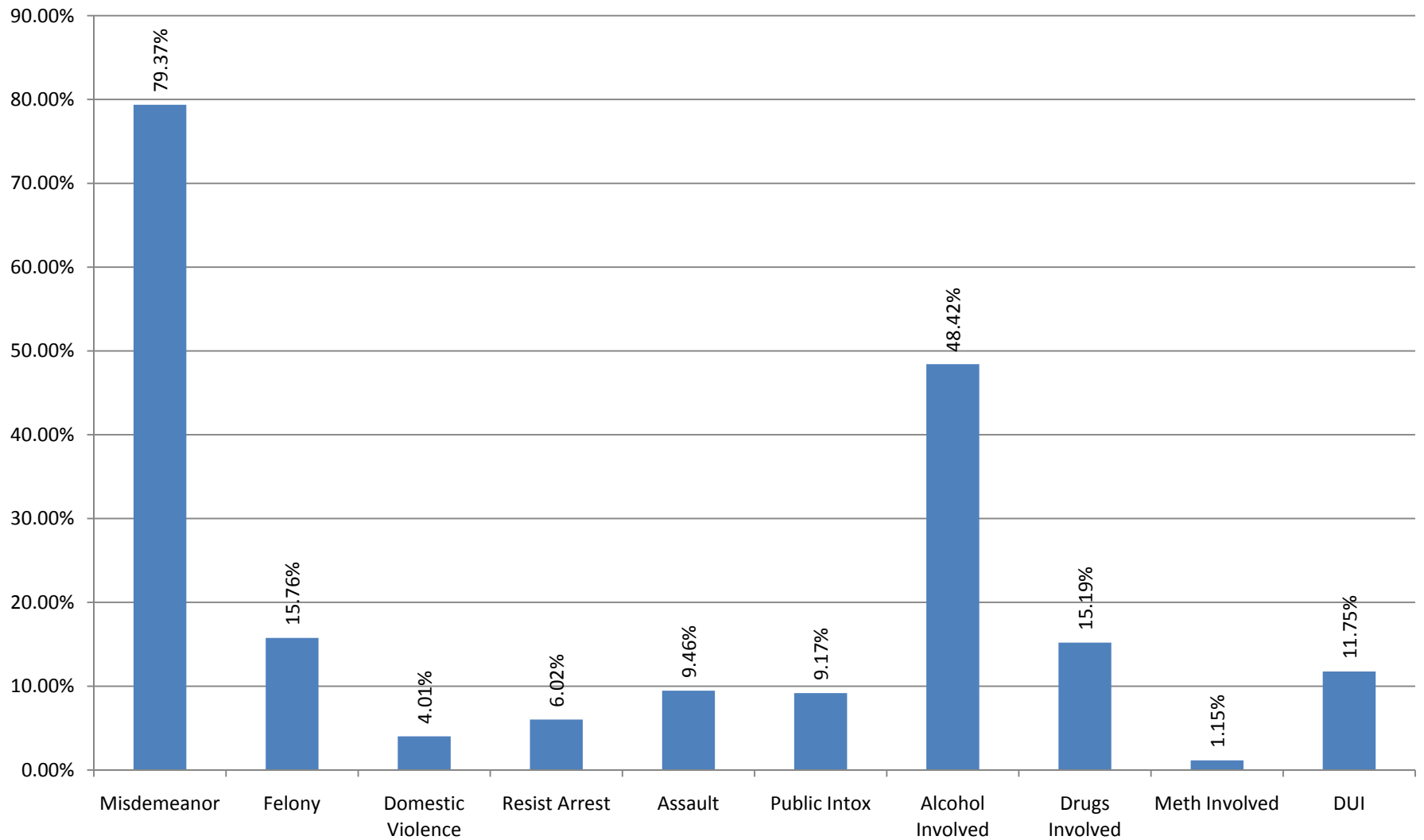
County	Total Offenses	Misdemeanor	Felony	Residency			Female	Male	Unknown Gender	Average Age
				In County	In-State Visitor	Out of State				
Statewide	349	277	55	271	9	9	92	257	0	15.96
Albany	2	2		2				2		15.50
Big Horn										
Campbell	30	21	1	2			15	15		16.27
Carbon	26	12	13	24		1	1	25		15.88
Converse	22	16	5	18	1	1	4	18		16.05
Crook										
FCACC										
Fremont	137	124	5	110	1	2	50	87		15.94
Goshen	6	5	2	4		1		6		16.17
Hot Springs										
Johnson										
Laramie										
Lincoln										
Natrona	1	1		1			1			13.00
Niobrara										
Park	16	6	5	10	3		2	14		15.88
Platte	1	1		1				1		9.00
Sheridan	2		2	2				2		16.50
Sublette	2	2		1			1	1		16.00
Sweetwater	99	85	19	91	4	4	18	81		16.00
Teton	3		3	3				3		17.00
Uinta	2	2		2				2		15.00
Washakie										
Weston										

**Percents by Department \***

County	Total Offenses	Misdemeanor	Felony	Residency			Female	Male	Unkown Gender
				In County	In-State Visitor	Out of State			
Statewide	349	79.37%	15.76%	77.65%	2.58%	2.58%	26.36%	73.64%	0.00%
Albany	2	100.00%	0.00%	100.00%	0.00%	0.00%	0.00%	100.00%	0.00%
Big Horn									
Campbell	30	70.00%	3.33%	6.67%	0.00%	0.00%	50.00%	50.00%	0.00%
Carbon	26	46.15%	50.00%	92.31%	0.00%	3.85%	3.85%	96.15%	0.00%
Converse	22	72.73%	22.73%	81.82%	4.55%	4.55%	18.18%	81.82%	0.00%
Crook									
FCACC									
Fremont	137	90.51%	3.65%	80.29%	0.73%	1.46%	36.50%	63.50%	0.00%
Goshen	6	83.33%	33.33%	66.67%	0.00%	16.67%	0.00%	100.00%	0.00%
Hot Springs									
Johnson									
Laramie									
Lincoln									
Natrona	1	100.00%	0.00%	100.00%	0.00%	0.00%	100.00%	0.00%	0.00%
Niobrara									
Park	16	37.50%	31.25%	62.50%	18.75%	0.00%	12.50%	87.50%	0.00%
Platte	1	100.00%	0.00%	100.00%	0.00%	0.00%	0.00%	100.00%	0.00%
Sheridan	2	0.00%	100.00%	100.00%	0.00%	0.00%	0.00%	100.00%	0.00%
Sublette	2	100.00%	0.00%	50.00%	0.00%	0.00%	50.00%	50.00%	0.00%
Sweetwater	99	85.86%	19.19%	91.92%	4.04%	4.04%	18.18%	81.82%	0.00%
Teton	3	0.00%	100.00%	100.00%	0.00%	0.00%	0.00%	100.00%	0.00%
Uinta	2	100.00%	0.00%	100.00%	0.00%	0.00%	0.00%	100.00%	0.00%
Washakie									
Weston									

\* Total percents may not equal 100 due to lack of information, or a single arrest involving multiple crimes.

## Crimes as a Percent of all Juvenile Arrests



Juvenile arrests involve persons age 17 and below

**Statewide Juvenile Arrests**  
**January 1, 2010 - December 31, 2010**

***Meth, Drugs & Public Intoxication***

County Department	Total Offenses	Meth Involved	% Meth of Total	Drugs Involved	% Drugs of Total	Public Intox.	% PI of Total	Pub. Intox. Ave. BAC
Statewide	349	4	1.15%	53	15.19%	32	15.63%	0.144
Albany	2							
Big Horn								
Campbell	30			5	16.67%			
Carbon	26			5	19.23%			
Converse	22			3	13.64%			
Crook								
FCACC								
Fremont	137			17	12.41%	25	18.25%	0.162
Goshen	6			1	16.67%			
Hot Springs								
Johnson								
Laramie								
Lincoln								
Natrona	1			1	100.00%			
Niobrara								
Park	16			1	6.25%			
Platte	1							
Sheridan	2							
Sublette	2							
Sweetwater	99	4	4.04%	19	19.19%	7	7.07%	0.081
Teton	3							
Uinta	2			1	50.00%			
Washakie								
Weston								

**Statewide Juvenile Arrests**  
**January 1, 2010 - December 31, 2010**

**Juvenile DUI Arrests**

County Department	Total Offenses	Underage DUI Offenses	% DUI Of Total	Ave. BAC	Drugs Involved	% DUI Drugs Inv.
Statewide	349	41	11.75%	0.111	9	2.58%
Albany	2	2	100.00%	0.141		
Big Horn						
Campbell	30	4	13.33%	0.085	1	3.33%
Carbon	26	1	3.85%	0.039		
Converse	22	3	13.64%	0.110	1	4.55%
Crook						
FCACC						
Fremont	137	16	11.68%	0.116	4	2.92%
Goshen	6					
Hot Springs						
Johnson						
Laramie						
Lincoln						
Natrona	1	1	100.00%		1	100.00%
Niobrara						
Park	16	1	6.25%			
Platte	1					
Sheridan	2					
Sublette	2					
Sweetwater	99	13	13.13%	0.118	2	2.02%
Teton	3					
Uinta	2					
Washakie						
Weston						

**Juvenile MIP Arrests**

County Department	Total Offenses	MIP Arrests	% MIP to Total	Ave. MIP BAC
Statewide	349	85	24.36%	0.129
Albany	2	1	50.00%	0.141
Big Horn				
Campbell	30	7	23.33%	0.075
Carbon	26	3	11.54%	0.147
Converse	22	7	31.82%	0.074
Crook				
FCACC				
Fremont	137	60	43.80%	0.143
Goshen	6	1	16.67%	0.280
Hot Springs				
Johnson				
Laramie				
Lincoln				
Natrona	1			
Niobrara				
Park	16	1	6.25%	0.014
Platte	1			
Sheridan	2			
Sublette	2			
Sweetwater	99	14	14.14%	0.062
Teton	3			
Uinta	2	1	50.00%	0.170
Washakie				
Weston				

**Statewide Underage Arrests for DUI and MIP**  
**January 1, 2010 - December 31, 2010**

**Underage DUI Arrests**

County	DUI	Underage	% DUI	Ave.	Drugs	% DUI
Department	Offenses	Offenses	Of Total	BAC	Involved	Drugs Inv.
Statewide	4,795	316	6.59%	0.0730	52	1.08%
Albany	354	44	12.43%	0.0972	4	1.13%
Big Horn	57	3	5.26%	0.0333	1	1.75%
Campbell	678	27	3.98%	0.0940	1	0.15%
Carbon	179	10	5.59%	0.1222	3	1.68%
Converse	141	12	8.51%	0.0694	5	3.55%
Crook	51	1	1.96%			
FCACC	1					
Fremont	349	25	7.16%	0.0707	2	0.57%
Goshen	103	7	6.80%	0.0613	1	0.97%
Hot Springs	26	1	3.85%	0.1700		
Johnson	50	2	4.00%	0.0500	1	2.00%
Laramie	576	34	5.90%	0.0487	4	0.69%
Lincoln	125	6	4.80%	0.0415	1	0.80%
Natrona	670	50	7.46%	0.0576	7	1.04%
Niobrara	11					
Park	186	13	6.99%	0.0914	4	2.15%
Platte	39	4	10.26%	0.0430	2	5.13%
Sheridan	231	17	7.36%	0.0625	4	1.73%
Sublette	109	6	5.50%	0.0450		
Sweetwater	482	38	7.88%	0.0824	8	1.66%
Teton	185	6	3.24%	0.0393		
Uinta	107	4	3.74%	0.0835	2	1.87%
Washakie	59	4	6.78%	0.0925	2	3.39%
Weston	26	2	7.69%	0.0425		

**MIP Arrests**

County	Total	MIP	% MIP	Ave. MIP
Department	Offenses	Arrests	to Total	BAC
Statewide	15,914	465	2.92%	0.0923
Albany	735	85	11.56%	0.0880
Big Horn	112	3	2.68%	0.0833
Campbell	1,337	25	1.87%	0.0764
Carbon	536	9	1.68%	0.0584
Converse	380	31	8.16%	0.0663
Crook	67	1	1.49%	
FCACC	2,759	12	0.43%	0.1333
Fremont	1,444	115	7.96%	0.1255
Goshen	211	5	2.37%	0.1440
Hot Springs	54	1	1.85%	0.0700
Johnson	201	5	2.49%	0.1070
Laramie	1,544	4	0.26%	
Lincoln	242	8	3.31%	0.0674
Natrona	2,250	45	2.00%	0.0854
Niobrara	41	5	12.20%	0.1042
Park	521	20	3.84%	0.0689
Platte	87	9	10.34%	0.1057
Sheridan	519	6	1.16%	0.1245
Sublette	216	10	4.63%	0.0142
Sweetwater	1,700	26	1.53%	0.0308
Teton	400	6	1.50%	0.1040
Uinta	355	22	6.20%	0.1295
Washakie	152	11	7.24%	0.0855
Weston	51	1	1.96%	

\* Involves all arrests ages 20 and under.

**Statewide Juvenile Arrests**  
**January 1, 2010 - December 31, 2010**

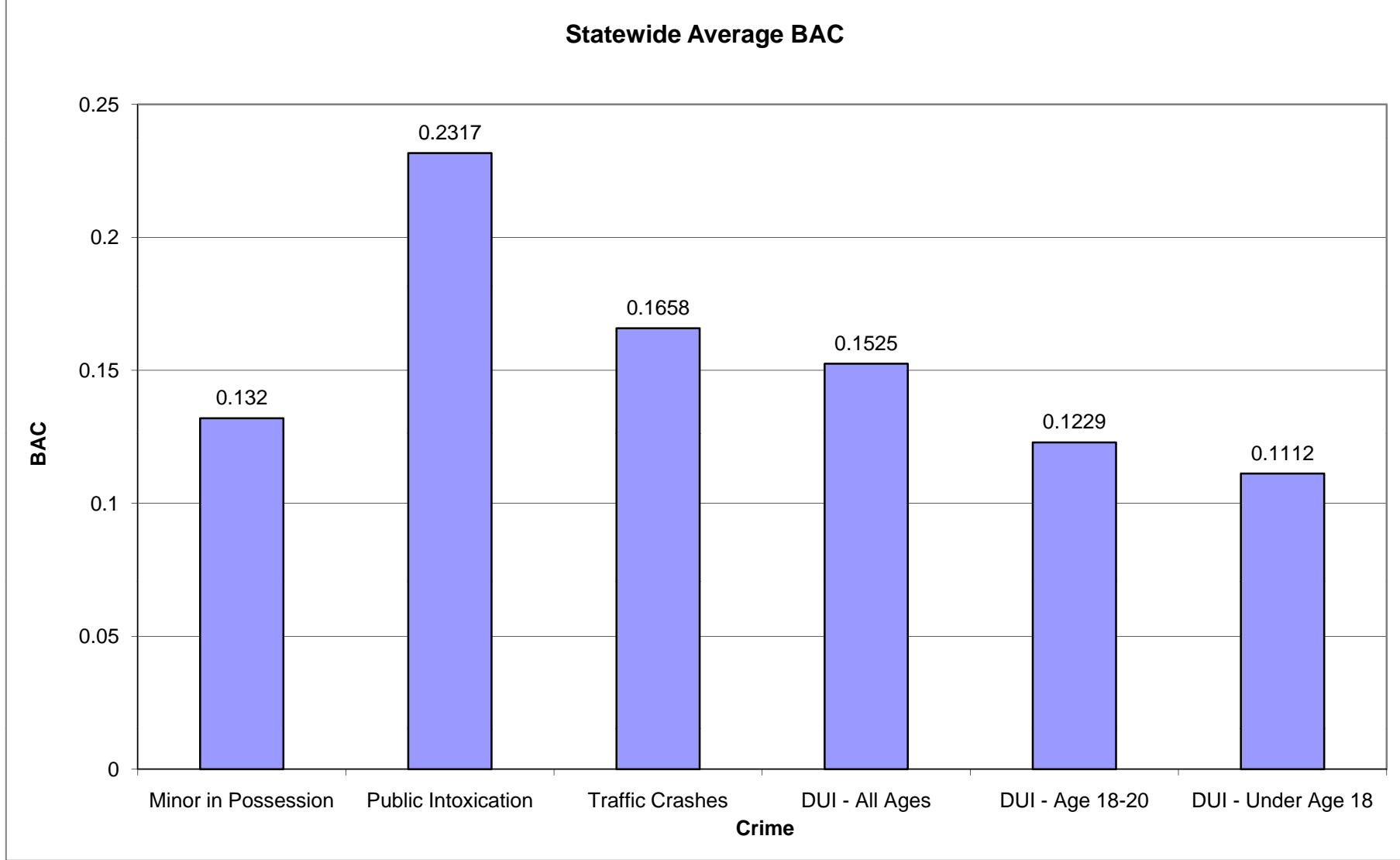
**DUI Arrests**

County Department	Total Offenses	DUI Offenses	% DUI Of Total	Ave. BAC	DUI Involving Drugs	% DUI Involving Drugs
Statewide	349	41	11.75%	0.111	9	2.58%
Albany	2	2	100.00%	0.141		
Big Horn						
Campbell	30	4	13.33%	0.085	1	3.33%
Carbon	26	1	3.85%	0.039		
Converse	22	3	13.64%	0.110	1	4.55%
Crook						
FCACC						
Fremont	137	16	11.68%	0.116	4	2.92%
Goshen	6					
Hot Springs						
Johnson						
Laramie						
Lincoln						
Natrona	1	1	100.00%		1	100.00%
Niobrara						
Park	16	1	6.25%			
Platte	1					
Sheridan	2					
Sublette	2					
Sweetwater	99	13	13.13%	0.118	2	2.02%
Teton	3					
Uinta	2					
Washakie						
Weston						

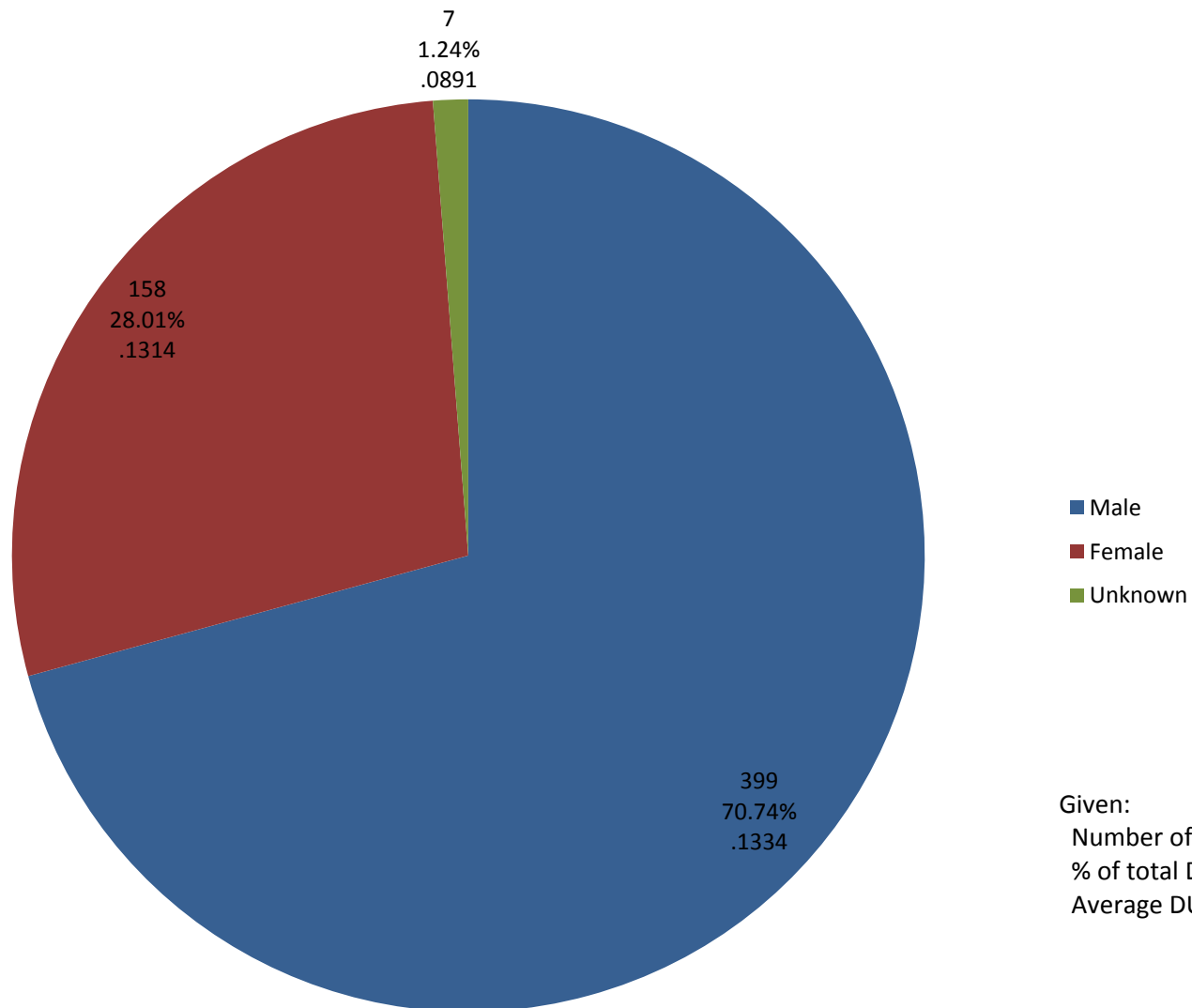
**Traffic Crashes**

County Department	Traffic Crashes	Alcohol Involved	% Alcohol Involved	Average BAC	Drugs Involved
Statewide	5	3	60.00%	0.185	0
Albany					
Big Horn					
Campbell					
Carbon					
Converse					
Crook					
FCACC					
Fremont	3	3	100.00%	0.210	
Goshen					
Hot Springs					
Johnson					
Laramie					
Lincoln					
Natrona					
Niobrara					
Park					
Platte					
Sheridan					
Sublette					
Sweetwater	2				
Teton					
Uinta					
Washakie					
Weston					





## MIP BAC by Gender

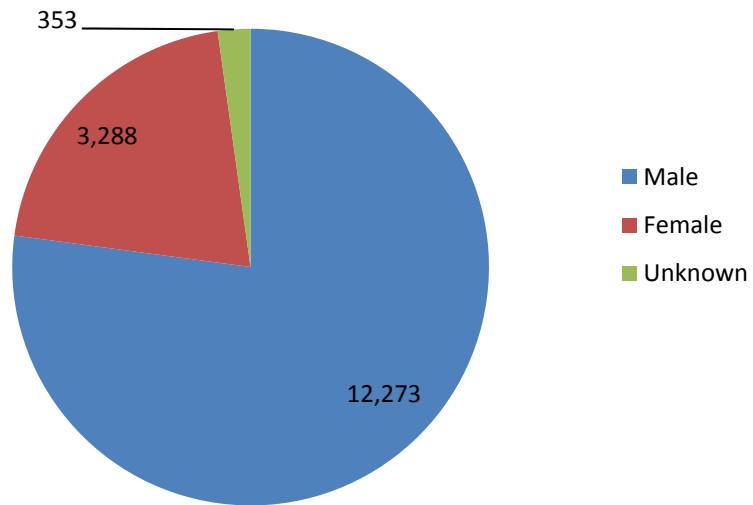


Given:  
Number of Arrests  
% of total DUIs  
Average DUI BAC

## Demographics

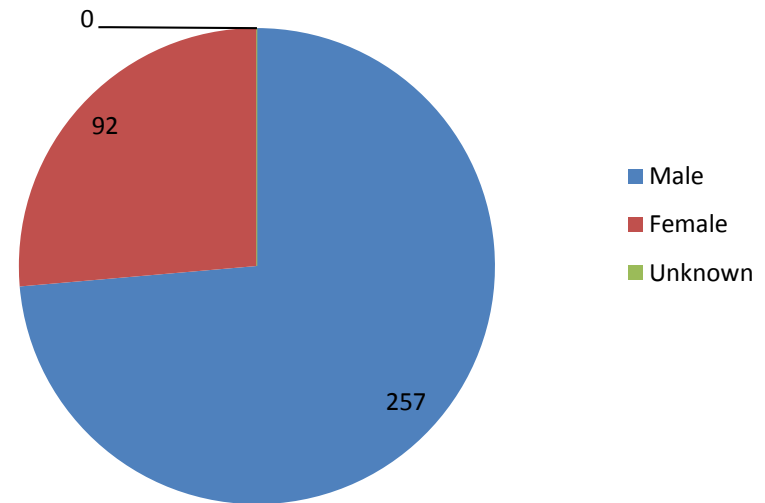
### All Arrests

Average Age: 34.37

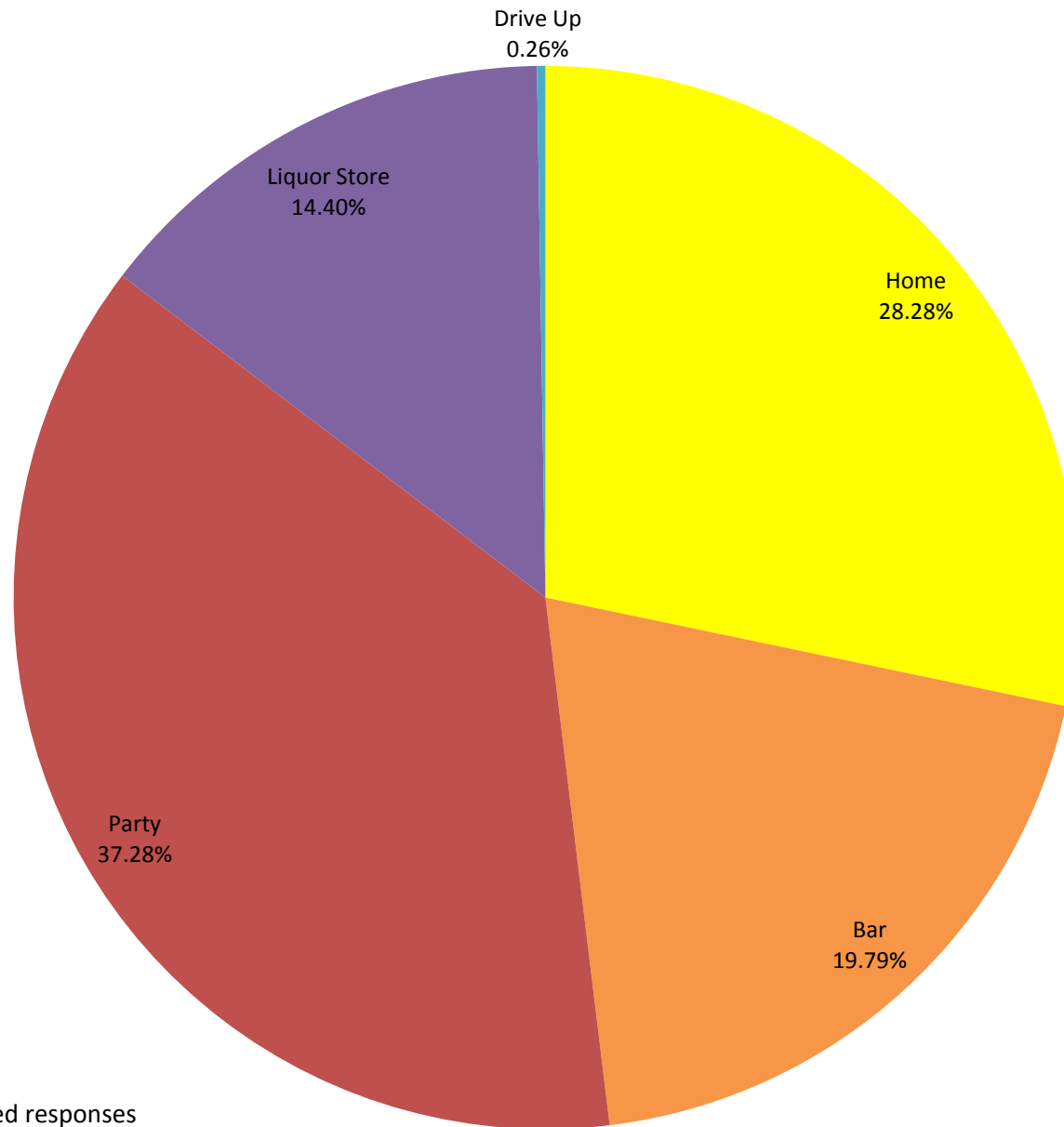


### Juvenile Arrests

Average Age: 15.96



## Where Minors Obtained Alcohol



Based on 389 reported responses

**Natrona County Arrests**  
**January 1, 2010 - December 31, 2010**

**Numbers by Department**

County	Total Offenses	Misdemeanor	Felony	Domestic Violence	Resist Arrest	Assault	Public Intox	Alcohol Involved	Drugs Involved	Residency			Female	Male	Unknown Gender	Average Age
										In County	Other WY	Out of State				
Natrona County	2641	2183	215	120	40	59	520	1602	272	2105	130	174	593	1950	98	32.97
Casper PD	1866	1534	160	90	33	44	454	1141	198	1508	94	121	449	1355	62	32.67
Evansville PD	86	76	2	3	1	1	7	36	5	71	5	7	19	67	0	31.28
Midwest PD	3	3			1			3		3				3	0	50.33
Mills PD	266	217	13	7	3	7	29	149	24	203	5	10	42	197	27	34.88
Natrona SO	286	235	29	14		7	22	181	20	226	17	18	63	216	7	33.67
Other	37	26	7	5			8	17	12	28		4	7	28	2	29.07
WHP	97	92	4	1	2			75	13	66	9	14	13	84	0	33.41

**Percents by Department \***

County	Total Offenses	Misdemeanor	Felony	Domestic Violence	Resist Arrest	Assault	Public Intox	Alcohol Involved	Drugs Involved	Residency			Female	Male	Unkown Gender
										In County	Other WY	Out of State			
Natrona County	2641	82.66%	8.14%	4.54%	1.51%	2.23%	19.69%	60.66%	10.30%	79.70%	4.92%	6.59%	22.45%	73.84%	3.71%
Casper PD	1866	82.21%	8.57%	4.82%	1.77%	2.36%	24.33%	61.15%	10.61%	80.81%	5.04%	6.48%	24.06%	72.62%	3.32%
Evansville PD	86	88.37%	2.33%	3.49%	1.16%	1.16%	8.14%	41.86%	5.81%	82.56%	5.81%	8.14%	22.09%	77.91%	0.00%
Midwest PD	3	100.00%	0.00%	0.00%	33.33%	0.00%	0.00%	100.00%	0.00%	100.00%	0.00%	0.00%	0.00%	100.00%	0.00%
Mills PD	266	81.58%	4.89%	2.63%	1.13%	2.63%	10.90%	56.02%	9.02%	76.32%	1.88%	3.76%	15.79%	74.06%	10.15%
Natrona SO	286	82.17%	10.14%	4.90%	0.00%	2.45%	7.69%	63.29%	6.99%	79.02%	5.94%	6.29%	22.03%	75.52%	2.45%
Other	37	70.27%	18.92%	13.51%	0.00%	0.00%	21.62%	45.95%	32.43%	75.68%	0.00%	10.81%	18.92%	75.68%	5.41%
WHP	97	94.85%	4.12%	1.03%	2.06%	0.00%	0.00%	77.32%	13.40%	68.04%	9.28%	14.43%	13.40%	86.60%	0.00%

\* Total percents may not equal 100 due to lack of information, or a single arrest involving multiple crimes.

### ***MIP Arrests***

County Department	DUI Offenses	MIP Arrests	% MIP to DUI	Average MIP BAC
Natrona County	798	53	6.64%	0.137
Casper PD	477	37	7.76%	0.131
Evansville PD	16	2	12.50%	0.220
Midwest PD	1			
Mills PD	101	4	3.96%	
Natrona SO	126	7	5.56%	0.166
Other	7			
WHP	70	3	4.29%	0.120

### ***Meth, Drugs & Public Intoxication***

County Department	Total Offenses	Meth Involved	Drugs Involved	Public Intox.	Pub. Intox. Ave. BAC
Natrona County	2641	93	272	520	0.219
Casper PD	1866	63	198	454	0.220
Evansville PD	86	1	5	7	0.090
Midwest PD	3				
Mills PD	266	13	24	29	0.170
Natrona SO	286	8	20	22	0.209
Other	37	4	12	8	0.207
WHP	97	4	13		

### ***DUI Arrests***

County Department	Total Offenses	DUI Offenses	% DUI Of Total	Ave. BAC	DUI Involving Drugs	% DUI Involving Drugs
Natrona County	2641	798	30.22%	0.157	78	9.77%
Casper PD	1866	477	25.56%	0.148	54	11.32%
Evansville PD	86	16	18.60%	0.170	2	12.50%
Midwest PD	3	1	33.33%			
Mills PD	266	101	37.97%	0.138	6	5.94%
Natrona SO	286	126	44.06%	0.189	8	6.35%
Other	37	7	18.92%	0.170	1	14.29%
WHP	97	70	72.16%	0.179	7	10.00%

### ***Traffic Crashes***

County Department	Traffic Crashes	Alcohol Involved	% Alcohol Involved	Average BAC	Drugs Involved	% Drugs Involved
Natrona County	142	112	78.87%	0.161	24	16.90%
Casper PD	104	80	76.92%	0.159	17	16.35%
Evansville PD	6	5	83.33%	0.139	2	33.33%
Midwest PD						
Mills PD	8	5	62.50%	0.160	1	12.50%
Natrona SO	11	10	90.91%		2	18.18%
Other	2	1	50.00%		1	50.00%
WHP	11	11	100.00%	0.172	1	9.09%

### ***Underage DUI Arrests***

County Department	DUI Offenses	Underage Offenses	% DUI Of Total	Ave. BAC	Drugs Involved	% DUI Drugs Inv.
Natrona County	798	58	7.27%	0.121	8	13.79%
Casper PD	477	44	9.22%	0.116	6	13.64%
Evansville PD	16	3	18.75%	0.186	1	33.33%
Midwest PD	1					
Mills PD	101	4	3.96%	0.130		
Natrona SO	126	6	4.76%		1	16.67%
Other	7					
WHP	70	1	1.43%	0.128		

### *Alcohol and Drug Involvement*

#### **Total Offenses**

County Department	Total Offenses	Number Involving Alcohol	Percent Involving Alcohol	Number Involving Drugs	Percent Involving Drugs
Natrona County	2641	1602	60.66%	272	10.30%
Casper PD	1866	1141	61.15%	198	10.61%
Evansville PD	86	36	41.86%	5	5.81%
Midwest PD	3	3	100.00%		
Mills PD	266	149	56.02%	24	9.02%
Natrona SO	286	181	63.29%	20	6.99%
Other	37	17	45.95%	12	32.43%
WHP	97	75	77.32%	13	13.40%

#### **Felony Offenses**

County Department	Felony Offenses	Number Involving Alcohol	Percent Involving Alcohol	Number Involving Drugs	Percent Involving Drugs
Natrona County	215	58	26.98%	64	29.77%
Casper PD	160	45	28.13%	46	28.75%
Evansville PD	2				
Midwest PD					
Mills PD	13	5	38.46%	4	30.77%
Natrona SO	29	7	24.14%	6	20.69%
Other	7			5	71.43%
WHP	4	1	25.00%	3	75.00%

#### **Misdemeanor Offenses**

County Department	Misdemeanor Offenses	Number Involving Alcohol	Percent Involving Alcohol	Number Involving Drugs	Percent Involving Drugs
Natrona County	2183	1415	64.82%	185	8.47%
Casper PD	1534	1000	65.19%	136	8.87%
Evansville PD	76	31	40.79%	3	3.95%
Midwest PD	3	3	100.00%		
Mills PD	217	132	60.83%	17	7.83%
Natrona SO	235	162	68.94%	11	4.68%
Other	26	15	57.69%	6	23.08%
WHP	92	72	78.26%	12	13.04%

#### **Domestic Violence**

County Department	Domestic Violence Offenses	Number Involving Alcohol	Percent Involving Alcohol	Number Involving Drugs	Percent Involving Drugs
Natrona County	120	61	50.83%	7	5.83%
Casper PD	90	48	53.33%	6	6.67%
Evansville PD	3	1	33.33%		
Midwest PD					
Mills PD	7	3	42.86%		
Natrona SO	14	7	50.00%		
Other	5	2	40.00%	1	20.00%
WHP	1				

#### **Resisting Arrest**

County Department	Resisting Arrest Offenses	Number Involving Alcohol	Percent Involving Alcohol	Number Involving Drugs	Percent Involving Drugs
Natrona County	40	28	70.00%	7	17.50%
Casper PD	33	23	69.70%	7	21.21%
Evansville PD	1	1	100.00%		
Midwest PD	1	1	100.00%		
Mills PD	3	2	66.67%		
Natrona SO					
Other					
WHP	2	1	50.00%		

#### **Assault**

County Department	Assault Offenses	Number Involving Alcohol	Percent Involving Alcohol	Number Involving Drugs	Percent Involving Drugs
Natrona County	59	32	54.24%	4	6.78%
Casper PD	44	24	54.55%	4	9.09%
Evansville PD	1				
Midwest PD					
Mills PD	7	2	28.57%	1	14.29%
Natrona SO	7	6	85.71%		
Other					
WHP					

### **Location of Alcohol Consumption and Point of Sale by Department**

Department	Location of Consumption							Point of Sale					
	Alcohol Involved	Home	Bar	Party	Car	Other	No Response	Home	Bar	Drive Up	Party	Liquor Store	No Response
Casper PD	1141	229	305	85	26	108	238	114	277		53	65	357
Evansville PD	36	6	7	1		1	8	2	6		1		9
Midwest PD	3		2						2				
Mills PD	149	32	64	7	7		13	13	50		6	3	16
Natrona SO	181	35	73	9	7	5	23	11	63	1	6	11	34
Other	17	2	6	1		1	2	1	3		1	1	3
WHP	75	9	24	2	16	13	5	2	32		1	13	15
Natrona County Totals	1602	313	481	105	56	128	289	143	433	1	68	93	434

Department	Bar Name	No. of Reports
Casper PD	3 Crowns	1
	Alibi	27
	Armor's	1
	Backdoor Lounge	1
	Baja	1
	Beacon	9
	Butch's	17
	Chatter's	2
	Cowboy's	4
	CY Liquors	4
	Downtown Grill	2
	Drake's	5
	Eagle's	3
	El Marko	7
	Fire Rock	2
	Fireside	15
	Guadalajara	1
	Hideaway	1
	Hooter's	1
	Hoseshoe	1
	Johnny O's	3
	Moonlight	33
	Old Chicago	5
	Paradise Liquors	3
	Parkway Plaza	1
	Poor Boys	1

Dept.	Bar Name	No. of Reports
Casper PD	Royal Inn	1
	Sandbar	51
Evansville PD	Sanford's	6
	Sidelines	33
	Sunrise Bowling	2
	Taylor's	1
	TJ's	2
	VFW	6
	Vintage	2
	Wonder Bar	14
Midwest PD	Butch's	4
	Horseshoe	1
Mills PD	Taylor's	1
	Prairie Schooner	1
	Rimrock	1
	Alibi	2
	Baja	1
	Beacon	25
	Butch's	2
	Chatters	1
	Cowboy's	9
	Eagle	1
	Fireside	1
	Hideaway	1
	Johnny O's	1
	OT	3
	Sandbar	3
	Sidelines	1

Dept.	Bar Name	No. of Reports
Mills PD	Taylor's	2
	VFW	8
Natrona SO	Alibi	5
	American Legion	1
	Beacon	5
	Butch's	6
	Chatter's	3
	Cowboy's	22
	Drake's	1
	El Marko	1
	Hideaway	2
	Moonlight	3
	Old Chicago	1
	On the Border	1
Other	Sandbar	2
	Sidelines	10
	Taylor's	2
	Alibi	1
	Butch's	1
WHP	Beacon	4
	Butch's	1
	Cowboy's	4
	Drake's	2
	Firerock	1
	Horseshoe	1
	Old Chicago	1
	Sandbar	2
	Sidelines	2
	VFW	1

\* Total of percents in Location of Consumption and Point of Sale categories may exceed 100% due to single arrests involving more than one location or point of sale.



### ACKNOWLEDGEMENTS

This project was accomplished due to the committed support of all the law enforcement administrators in Wyoming, and in particular, the Sheriffs' generous commitment of agency resources. The day-to-day supervision and weekly submittal of the project reporting forms and the individual efforts of the hundreds of arresting/detention officers who filled out the reporting forms should be acknowledged as well. Their collective efforts were absolutely essential to the overall success of this project.

#### Albany

Jim Pond – Sheriff

Gary Wilken

#### Big Horn

Ken Blackburn – Sheriff

Debbie Cook

Deb Rathbun

#### Campbell

Bill Pownall – Sheriff

Tom O'Neal

#### Carbon

Jerry Colson – Sheriff

Becky George

#### Converse

Clint Becker – Sheriff

Jan Dillon

#### Crook

Steve Stahla – Sheriff

John Rice

Peggy Boardman

#### Fremont

Skip Hornecker – Sheriff

Kathy Mosbrucker

Ron Blumenshine

#### Fremont County ACC

Lisa Amos - Director

David Tappe

#### Goshen

Don Murphy – Sheriff

Bryan Morehouse

Brenda Sishc

#### Hot Springs

Lou Falgoust – Sheriff

Dan Pebbles

#### Johnson

Steve Kozisek – Sheriff

Kevin Filbert

#### Laramie

Danny Glick – Sheriff

Bill Long

Jay Stewart

#### Lincoln

Shane Johnson – Sheriff

Bill Thek

#### Natrona

Mark Benton – Sheriff

John Becker

Tammy Britton

#### Niobrara

Rick Zerbe – Sheriff

Lori Doyle

Gayle Santistevan

#### Park

Scott Steward – Sheriff

Steve Oliver

#### Platte

Steve Keigley – Sheriff

Tiffany Duncan

#### Sheridan

Dave Hofmeier – Sheriff

Jane Gale

#### Sublette

Wayne Bardin – Sheriff

Wes Johnston

DeeDee Barta

#### Sweetwater

Richard Haskell – Sheriff

Shelli Kleinlein

#### Teton

Jim Whalen – Sheriff

Troy Sutton

#### Uinta

Lou Napoli – Sheriff

Sarah Jeffers

#### Washakie

Steve Rakness – Sheriff

Marilyn Keuntjes

Wanda Richards

#### Weston

Bill Ware - Sheriff

Jamie Stith

---

Database Manager:

Data Entry:

Data Entry:

Data Entry:

Cover Design:

Association Liaison:

Project Manager:

Highway Safety Grants Supervisor:

Highway Safety Grant Manager:

Erin Maggard - Johnson and Associates

Angela Hill – Johnson and Associates

Andrew Hill – Johnson and Associates

Christina Hill – Johnson and Associates

Susan Johnson - Johnson and Associates

Lori Emmert – Johnson and Associates

Ernest L. Johnson - Johnson and Associates

Dee West Peterson – WYDOT

Anna Thompson - WYDOT

## 2009-2010 - EVALUATION OF ALCOHOL FACTORS IN CUSTODIAL ARRESTS

### Albany County Sheriff's Department

OFFICER or CR NUMBER \_\_\_\_\_ DATE \_\_\_\_\_

*The following information is being collected in an effort to evaluate alcohol factors in custodial and DUI arrests in all twenty-three counties in Wyoming. This data will be collected for a period of 12 months (July 1, 2009 through June 30, 2010) and will be used for statistical analysis purposes only. Please fill out a separate form for every person being booked into your facility.*

*Please fill in the information based on your knowledge of the case, personal observations, and/or questioning of the person arrested. The person should be advised that no case sensitive information is being recorded and that this information is being collected for statistical purposes only. A copy of the final report will be provided to every participating agency. Thanks for your help.*

**DEPARTMENT** (Circle agency affecting arrest; if agency is not listed please fill in "Other")

Albany      Laramie      UW PD      WHP      G&F      Other: \_\_\_\_\_

**GENDER** (Circle one):    Male            Female            **AGE:** \_\_\_\_\_

**STATUS** (Circle one):    County Resident            In-State Visitor            Out-of-State Visitor

**OFFENSE CHARGED** (Circle all that apply):    Misdemeanor            Felony

**TYPE of CRIME** (Circle all that apply):

Domestic Violence            Assault            Resisting Arrest  
Public Intoxication            DUI            MIP

**TRAFFIC CRASH INVOLVED** (Circle one): Yes      No

**DRUGS INVOLVED** (Circle one): Yes      No

**METH INVOLVED** (Circle one): Yes      No

**ALCOHOL INVOLVED** (Note if you detect the odor of alcohol or if you have knowledge that the person had been drinking prior to being arrested) (Circle one): **Yes**      **No**

**If yes** (Fill in all that apply):

Intoximeter BAC: \_\_\_\_\_

Blood Test BAC: \_\_\_\_\_

UA BAC: \_\_\_\_\_

PBT BAC: \_\_\_\_\_

Refused all testing (Circle if applicable): Yes

**LOCATION OF LAST CONSUMPTION** (Circle all that apply):

Home            Bar (Name: \_\_\_\_\_)      Car      Party/Event

Other: \_\_\_\_\_      Did not respond

**POINT OF SALE OR WHERE ALCOHOL WAS OBTAINED** (Circle all that apply):

Home            Bar            Party/Event      Liquor Store      Drive-up Window

Other: \_\_\_\_\_      Did not respond

# WYOMING'S ALCOHOL IMPAIRMENT EDUCATIONAL GUIDE

## MALES - APPROXIMATE ALCOHOL CONCENTRATION (AC) PERCENTAGE

Estimates based on physically fit adult males who consume the alcohol over a one hour period.

DRINKS	BODY WEIGHT IN POUNDS								Nov-06
	100	120	140	160	180	200	220	240	
0	0.00	0.00	0.00	0.00	0.00	0.00	0.00	0.00	The <b>Only</b> Safe Driving Limit
1	0.04	0.03	0.03	0.02	0.02	0.02	0.02	0.02	Impairment Begins
2	0.08	0.06	0.05	0.05	0.04	0.04	0.03	0.03	
3	0.11	0.09	0.08	0.07	0.06	0.06	0.05	0.05	Driving Skills Significantly Affected
4	0.15	0.12	0.11	0.09	0.08	0.08	0.07	0.06	
5	0.19	0.16	0.13	0.12	0.11	0.09	0.09	0.08	Legally Intoxicated Criminal Penalties
6	0.23	0.19	0.16	0.14	0.13	0.11	0.10	0.09	
7	0.26	0.22	0.19	0.16	0.15	0.13	0.12	0.11	
8	0.30	0.25	0.21	0.19	0.17	0.15	0.14	0.13	
9	0.34	0.28	0.24	0.21	0.19	0.17	0.15	0.14	
10	0.37	0.31	0.27	0.23	0.21	0.19	0.17	0.16	
11	0.41	0.34	0.29	0.26	0.23	0.21	0.18	0.17	
12	0.45	0.37	0.32	0.28	0.25	0.23	0.20	0.19	
13	0.48	0.40	0.35	0.30	0.27	0.25	0.22	0.20	
14	0.52	0.44	0.37	0.33	0.30	0.26	0.24	0.22	
15	0.56	0.47	0.40	0.35	0.32	0.28	0.25	0.23	
16	0.60	0.50	0.43	0.37	0.34	0.30	0.27	0.25	
17	0.63	0.53	0.45	0.40	0.36	0.32	0.29	0.27	
18	0.67	0.56	0.48	0.42	0.38	0.34	0.30	0.28	
19	0.71	0.59	0.51	0.44	0.40	0.36	0.32	0.30	Possible Coma or Death from Respiratory Paralysis
20	0.74	0.62	0.53	0.49	0.42	0.38	0.33	0.31	
21	0.78	0.65	0.56	0.51	0.44	0.40	0.35	0.33	

**DRIVING IMPAIRED**  
AC = .05% - .07%

Subtract .01% for each 40 minutes of drinking.  
One drink is 1.25 ounces of 80 proof liquor,  
12 ounces of beer, or 5 ounces of table wine.

**LEGALLY INTOXICATED**  
AC = .08% AND UP

**NOTE: PERSONS UNDER THE AGE OF 21 CAN FACE CRIMINAL PENALTIES IF CAUGHT DRIVING WITH A DETECTABLE ALCOHOL CONCENTRATION OF 0.02% OR MORE.**

\* Guide developed by J.Anderle, Laramie PD and Mike Moore, Wyoming Chemical Testing

ATTACHMENT "B"

# WYOMING'S ALCOHOL IMPAIRMENT EDUCATIONAL GUIDE

## FEMALES - APPROXIMATE ALCOHOL CONCENTRATION (AC) PERCENTAGE

Estimates based on physically fit adult females who consume the alcohol over a one hour period.

DRINKS	BODY WEIGHT IN POUNDS								Nov-06
	90	100	120	140	160	180	200	220	
0	0.00	0.00	0.00	0.00	0.00	0.00	0.00	0.00	The <b>Only</b> Safe Driving Limit
1	0.05	0.05	0.03	0.03	0.03	0.03	0.02	0.02	Impairment Begins
2	0.10	0.09	0.08	0.07	0.06	0.05	0.05	0.04	
3	0.15	0.14	0.11	0.10	0.09	0.08	0.07	0.06	Driving Skills Significantly Affected
4	0.20	0.18	0.15	0.13	0.11	0.10	0.09	0.08	
5	0.25	0.23	0.19	0.16	0.14	0.13	0.11	0.10	Legally Intoxicated Criminal Penalties
6	0.30	0.27	0.23	0.19	0.17	0.15	0.14	0.12	
7	0.35	0.32	0.27	0.23	0.20	0.18	0.16	0.14	
8	0.40	0.36	0.30	0.26	0.23	0.20	0.18	0.17	
9	0.45	0.41	0.34	0.29	0.26	0.23	0.20	0.19	
10	0.51	0.46	0.37	0.32	0.29	0.26	0.22	0.21	
11	0.56	0.50	0.42	0.36	0.32	0.28	0.25	0.23	
12	0.61	0.55	0.45	0.39	0.35	0.31	0.27	0.25	
13	0.66	0.59	0.49	0.42	0.37	0.33	0.29	0.27	
14	0.71	0.64	0.53	0.45	0.40	0.36	0.31	0.29	
15	0.76	0.68	0.57	0.48	0.43	0.38	0.34	0.31	
16	0.81	0.73	0.61	0.52	0.46	0.41	0.36	0.33	
17	0.86	0.77	0.64	0.55	0.49	0.43	0.38	0.36	
18	0.91	0.82	0.68	0.58	0.52	0.46	0.40	0.38	
19	0.96	0.87	0.71	0.61	0.55	0.49	0.42	0.40	Possible Coma or Death from Respiratory Paralysis
20	1.02	0.91	0.76	0.65	0.58	0.54	0.45	0.42	
21	1.07	0.96	0.79	0.69	0.61	0.56	0.47	0.44	

**DRIVING IMPAIRED**  
AC = .05% - .07%

Subtract .01% for each 40 minutes of drinking.  
One drink is 1.25 ounces of 80 proof liquor,  
12 ounces of beer, or 5 ounces of table wine.

**LEGALLY INTOXICATED**  
AC = .08% AND UP

**NOTE: PERSONS UNDER THE AGE OF 21 CAN FACE CRIMINAL PENALTIES IF CAUGHT DRIVING WITH A DETECTABLE ALCOHOL CONCENTRATION OF 0.02% OR MORE.**

\* Guide developed by J.Anderle, Laramie PD and Mike Moore, Wyoming Chemical Testing

## PROJECT MANAGER VITA

### CONTACT INFORMATION:

Ernest L. Johnson, Director of Services  
Johnson & Associates  
1036 Durango  
Douglas, WY 82633  
Phone: (307) 351-8614  
Fax: (800) 954-0778  
E-mail: [janda@communicomm.com](mailto:janda@communicomm.com)

### RELATED EDUCATION & EXPERIENCE:

- Twenty-four years experience as an administrator of a state agency with direct responsibility for budget development and administration, planning, organizing, directing, staffing, and program services delivery.
- Masters degree in Public Administration; over twenty years experience training and working with executives to achieve excellence in government, manage and implement change, increase organizational effectiveness and maximize program efficiency.
- Conducted in-depth management studies for criminal justice agencies for the states of Massachusetts and New Hampshire. These studies assessed the delivery of program services by agencies with statewide responsibilities and provided recommendations for increasing organizational efficiency and agency credibility.
- Over thirty-five years of experience in researching, writing, and administering a variety of federal and state grants. Grants involved in excess of several million dollars for a wide variety of purposes: personnel, equipment, training, research and providing services with targeted priorities.
- Extensive experience in researching, evaluating and implementing a wide variety of projects. These projects varied in scope and duration, and many required the involvement and partnership of multiple agencies and personnel throughout the state, as well as the enactment of state legislation.
  - Evaluation performed for the Substance Abuse Division - WDH – “Responsible Server Training Program” – October 2002
  - Managed the Wyoming First Lady’s Initiative to Reduce Underage Drinking – November 2004 to September 2006
  - Currently serving as the Facilitator for the Wyoming Seat Belt Coalition
  - Managed project and authored report: A Comprehensive Review of Alcohol State Statutes: Findings and Recommendations for Reducing Underage and Binge Drinking in Wyoming - 2008

---

## Alcohol and Crime in Wyoming - 2010

---

- Thirty years of experience in conducting a variety of feasibility studies
  - Conducted numerous feasibility studies for the Wyoming Legislature
  - Most recent feasibility study conducted for the Town of Wright: “Should the Town of Wright create its own Police Department?” May 2004
- Conducted executive level training for the US Department of Justice/ State Department:
  - Instructed a 40-hour training course entitled “The Office of Professional Responsibility” for the Lithuania National Police command staff - 2001
  - Instructed an 80-hour training course entitled “Sex Crimes Investigations” for Investigators and Prosecutors in Lithuania - 2001
- Faculty - Criminal Justice Department - University of Wyoming (September 2000 to present)
  - Currently teaching the following courses: Criminal Justice Management, Concepts of Modern Policing, Ethics in the Administration of Justice, Criminal Justice Civil Liability, Politics and the Judicial Process, Criminal Courts and Processes, and Police Deviance.
- Management consultant for the Wyoming Association of Sheriffs and Chiefs of Police - Projects completed or currently in progress:
  - Evaluation of Alcohol Factors in Custodial Arrest in Wyoming – May 2005
  - Statewide Public Opinion Survey: Alcohol Issues and Policies (phone survey of 4,600 residents of Wyoming – Report released November 2006
  - Evaluation of Alcohol Factors in Custodial Arrests in Wyoming - 2006: Phase I (data collection), Phase II (Analysis, Findings and Strategies)
  - Evaluation of Alcohol Factors in Custodial Arrests in Wyoming – 2007, 2008, 2009
  - Project Manager for the Enforcing Underage Drinking Laws Program – September 2007 to May 2009
  - Project Manager for WY-CIA Wyoming Communities in Action – Phase I, Phase II – September 2007 to May 2009
  - Project Manager for Reducing Underage Drinking and Driving – October 2007 to September 2009
  - Project Coordinator for Project Safe Neighborhoods in Wyoming: A national initiative directed by the US Department of Justice aimed at reducing gun crimes and violence in this country. Initiative is currently in its sixth year of operation in Wyoming.
- Facilitator/Coordinator for the Wyoming Seat Belt Coalition – December 2006 to present
- Administration and coordination of WYDOT-Highway Safety’s Selective Traffic Enforcement Program Grants for Wyoming law enforcement agencies– December 2008 to present