

Array of Services and the New Continuum

New Comprehensive and Supports Waiver

PART 1



Behavioral
Health
Division

April 17, 2014

Training Agenda

2

- The New continuum
- Why the focus needs to change
- New array of services
- Living Options and the possibilities for increasing outcomes and independence



What is a Continuum of Services?

3

- Range of services available
- More integrated care along a continuum that offers a combination of better quality services and more efficient ways of providing services.
- New ways of coordinating and linking resources
- Flexibility to change services and move toward more independent settings

What Does a Continuum of Services Look Like?

4



Active Participation



Time with Friends



Healthy Choices



Learning



Working



Supported Living

What Does a Continuum of Services Look Like?

5



Family Support



Preferred Activities



Self-Sufficiency



Independence



Active Participation



Community Membership



Building Relationships



Why the focus of services needs to change

6

Legislative Requirement



7

Wyoming Legislature Passed Senate Enrolled Act 82 in 2013

It also required “Replacement where possible of higher cost residential and day habilitation services with lower cost, more integrated services.”

More Reasons for the Changes

8

- Growing waiting list for services
- Growing costs per person on the waiver
- Requirement to be more efficient to serve more people



Wyoming Waiver Reality

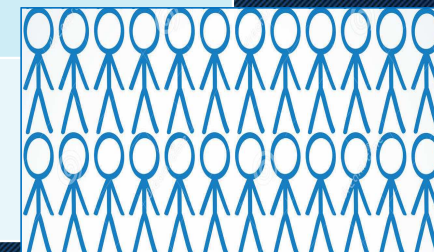
9



Serving More People, Long Term and Costs

10

Type of Service	Cost per Person	20 yrs. Cost	30 yrs. Cost
ICF/MR Institution	\$238,500	\$4,770,000	\$7,155,000
HCBS 24 hr. staffed Residential	\$150,000	\$3,000,000	\$4,500,000
Shared Living	\$50,000	\$1,000,000	\$1,500,000
Support in Own or Family Home	\$25,000	\$500,000	\$750,000



Reducing Per Person Expenditures, Serving More People

11

Institutions

\$\$\$

**Highest Cost
Old Model**

Community
Institution-like homes

HCBS Comprehensive
Waivers – group homes,
family supports &
supported living

A system that is person-centered,
to support families, and involve
people in their community.

Supports
Waivers

Services for Family
and Independent
living Support

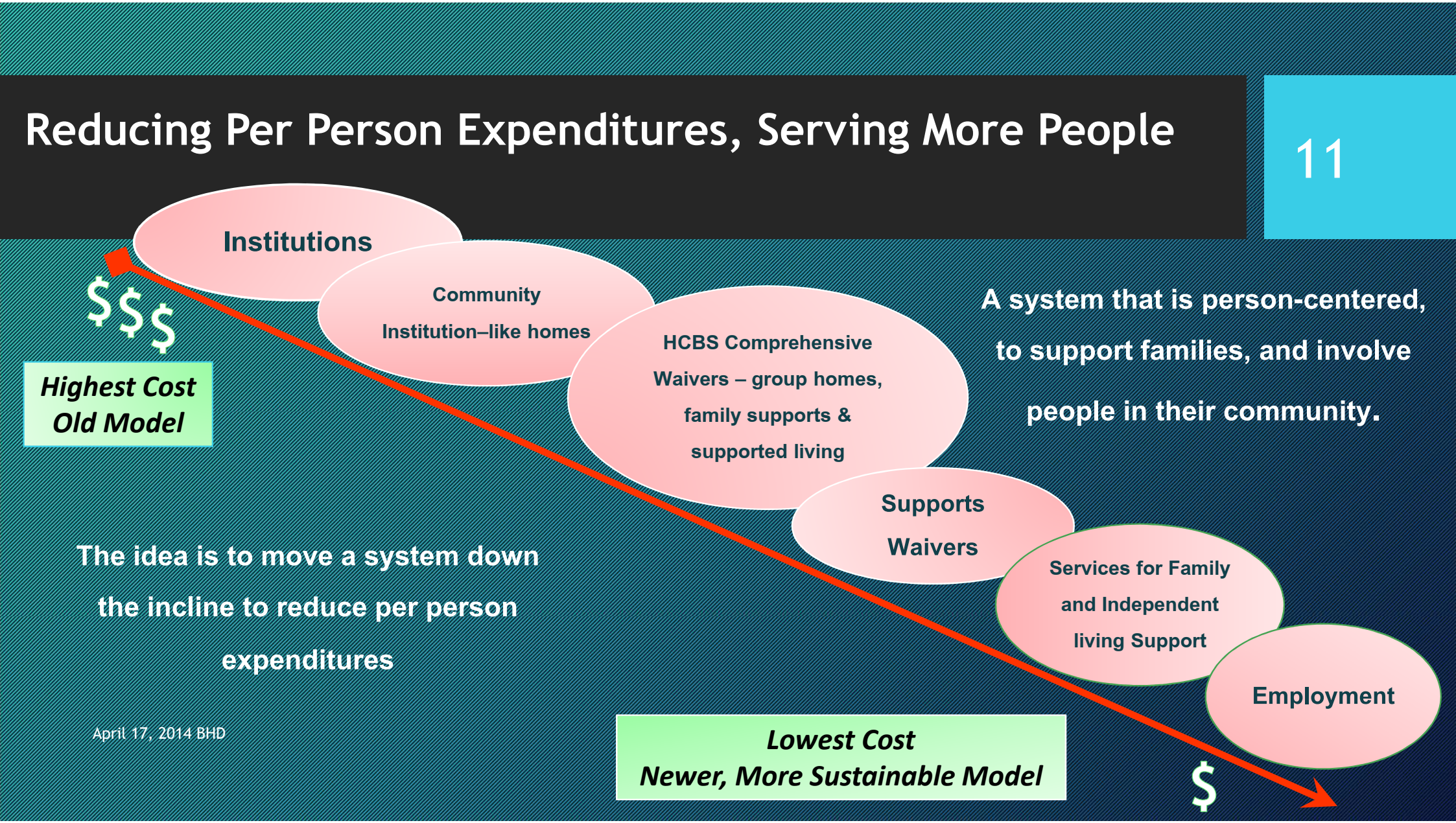
Employment

The idea is to move a system down
the incline to reduce per person
expenditures

April 17, 2014 BHD

**Lowest Cost
Newer, More Sustainable Model**

\$



Long Term Costs and Employment

12

Type of Service	1 yr. Cost	3 yr. Cost	10 yr. Cost
Sheltered Work/Day Habilitation	\$20,000	\$60,000	\$200,000
Supported Employment Services	\$20,000	\$50,000 <ul style="list-style-type: none">• \$20,000 yr. 1• \$20,000 yr. 2• \$10,000 yr. 3	\$85,000 <ul style="list-style-type: none">• \$50,000 1-3 yrs.• \$35,000 4-10 yrs.

Estimated figures from NASDDDS 3/13

April 17, 2014 BHD



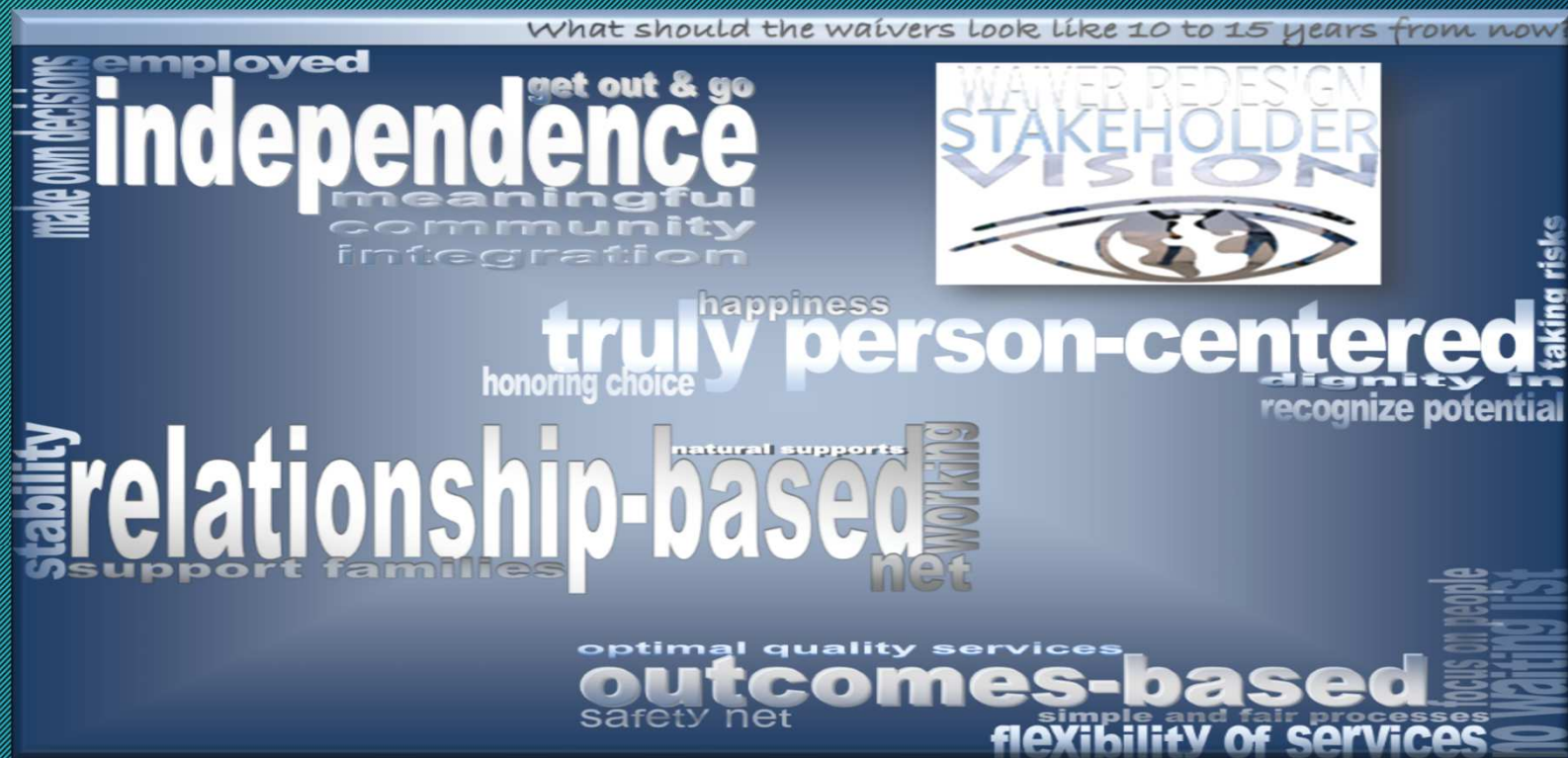
Vision for the New Waivers

13

April 17, 2014 BHD

Vision for the new waivers

14



A Vision That People Will.....

15

- Be healthy, happy and safe
- Have family and friends in their lives
- Go to school and be fully involved
- Work at a good paying job
- Make decisions about their life – both major and minor
- Be contributing citizens of their community
- Have dreams that come true



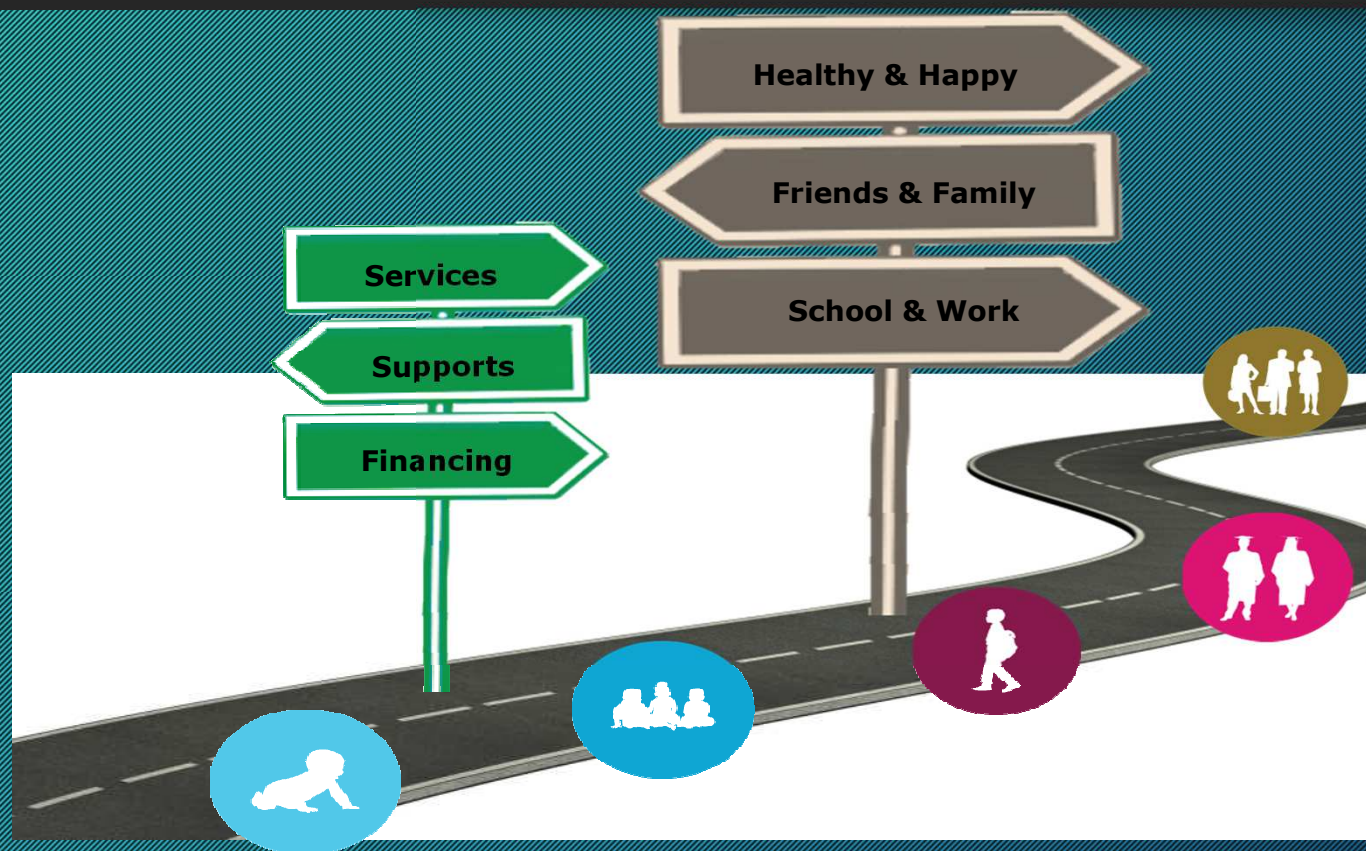
How Do You Make this Vision a Reality?

16

- **Supports and services chosen by the participant**
- **Services that fit the needs and goals of the of the participant**
- **Services that are least restrictive**
- **Services that promote independence and self-sufficiency**

It is About The Full Course of Life

17

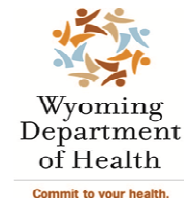


Sheli Reynolds UMKC

Array of Services and the New Continuum

New Comprehensive and Supports Waiver

PART 2



Behavioral
Health
Division

April 17, 2014

New Services Available



19

**Behavioral
Support
Services**

**Employment
Discovery &
Customization**

**Community
Integration**

**Supported
Employment
Follow Along**

Transportation

**Adult Day
Services**

Prevocational

**Res Hab
Shared
Living** (added to
Self-direction)

Homemaker
(added to
Self-direction)

Array of Employment Services



20

Employment Discovery and Customization

- 1:1 support service
- Limited time frame of 12 months –additional 12 months can be added upon review of progress
- Employment developed through job carving, self-employment, or other job restructuring strategies

Prevocational Services

- Designed to create a path to integrated employment
- Enable a participant to attain the highest level of work in the most integrated setting
- Tiered service

Supported Employment Follow Along

- Provided for or on behalf of the participant
- Intermittent and occasional job support, communicating with the participants supervisor
- Support phone calls between support staff and managerial staff

Array of Employment Services

21

Individual Supported Employment

- May be self-directed
- 1:1 support
- Can be provided in a variety of settings
- Supervision and training

Small Group Supported Employment

- Groups ranging from 2-9 persons
- Can be provided in a variety of settings
- Intensive ongoing support

Transportation

22



NEW!

- Gap service
- Non-medical transportation only
- Participant should use other resources that are free of charge whenever possible
- Capped at \$2000 per year

Array of In Home Support Services

23

Companion

- May be self-directed
- Relative providers may provide (excluding parents/stepparents)
- Safety in the home and community

Respite

- May be self-directed
- Provide caregiver relief
- Can be provided in the caregivers home, provider's home, or in the community

Personal Care

- May be self-directed
- Hands on or cuing to perform tasks
- ADL's
 - Bathing, Dressing
 - Toileting
 - Transferring
 - Light housework
 - Laundry
 - Meal prep

Homemaker

24



- Can be self-directed
- General household activities
- Comprehensive Waiver - Capped 3 hours per week per household or 624 units
- No cap on Supports Waiver
- Not available to participants who receive residential habilitation or special family habilitation home on the waiver

Adult Day Services

NEW!

- Tiered service
- Maximize skills
- Keep participants engaged in their environment and community
- Provided in a congregate setting



- ❖ Basic Level of Care
- ❖ Intermediate Level of Care
- ❖ High Level of Care

Community Integration

26

NEW!

- May be self-directed
- Greater independence
- Making connections with the community
- Tiered service

- ❖ Basic Level of Care
- ❖ Intermediate Level of Care
- ❖ High Level of Care

Residential Habilitation Services

27

April 17, 2014 BHD

Residential Habilitation Services

28

- Ongoing 24-hour support and supervision
- Daily rate based on tiered Level of Service Need
- Requiring at least 8 hours of support per daily unit billed

Level Of Service Tiers - Level 1

29

- High level of independence and functioning with no significant behavioral or medical needs.
- Supports require staff on site (within the home or apartment) meeting periodically with the participant to provide monitoring, training, and on-call support.
- At least 8 hours of direct support and supervision is required for billing.

Level Of Service Tiers - Level 2

30

- Similar to Level 1 but requires support for some behavioral or medical needs.
- Staff must be available on site (within the home or apartment) and with close proximity and on-call support to the residence when not directly involved in immediate support.

Level Of Service Tiers - Level 3

31

- Requires staff support due to moderate functional limitations in activities of daily living and/or behavioral support needs.
- Requires staff available on-site (within the home or apartment) for a minimum of eight (8) hours per day, and within hearing distance or readily available for ongoing personal care, behavioral support, training, and supervision.

Level Of Service Tiers - Level 4

32

- Requires consistent, ongoing, full-time staff support on site (within the home or apartment) with staff present throughout the night.
- Direct support and supervision is provided for regular and consistent personal care needs, behavioral and medical support not generally intense, and can be provided in a shared staffing setting.

Level Of Service Tiers - Level 5

33

- Provides supervision and supports due to significant and intensive functional limitations, medical and/or behavioral support needs.
- Requires one or more staff members on site or in line of sight during awake hours, providing frequent personal care and attention.

Level Of Service Tiers - Level 6

34

- Provides frequent personal support and supervision with full-time staff on site.
- Requires full attention of one (1) staff member on site during awake hours and hours of sleep depending on the scope and frequency of supports needed during the night.

Residential Host Home

35

- More personalized
- Less restrictive
- Only one or two participants
- Build relationships

Residential Shared Living

36

- May be self-directed
- Promotes community inclusion
- Assist with acquisition, retention, and improvement in skills related to living in the community.
- Individually tailored supports
- Tiered service

Supported Living

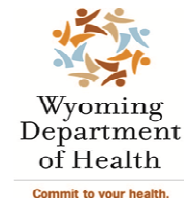
37

- May be self-directed
- In a home or apartment leased by the participant or guardian
- Can be in family home
- Individually tailored supports

Array of Services and the New Continuum

New Comprehensive and Supports Waiver

PART 3



Behavioral
Health
Division

April 17, 2014

Living Options

39

Residential Habilitation

- Requires the highest amount of funding
- Least Independent setting
- Needs 24 hour paid supports - more than a participant living with family or in supported living

With Family

- Requires less paid supports than residential habilitation
- Participants live with family members
- Not as independent as Supported Living

Independent or Semi-Independent

- Requires less paid supports than residential habilitation
- Participant lives in an apartment or home
- A more active and independent setting

Living Options

40

- Family
- Extended Family
- Friends
- Shared Living
- Independently or with a friend

Least Restrictive Settings

41

Residential Habilitation Supports

Residential Habilitation Services are reimbursed at a daily rate based on the tiered Level of Supports needed by each individual. Residential Habilitation services provide ongoing 24-hour services and supports and require a minimum of eight hours of service per daily unit billed.

Group Home

More Restrictive

Special Family Habilitation Home

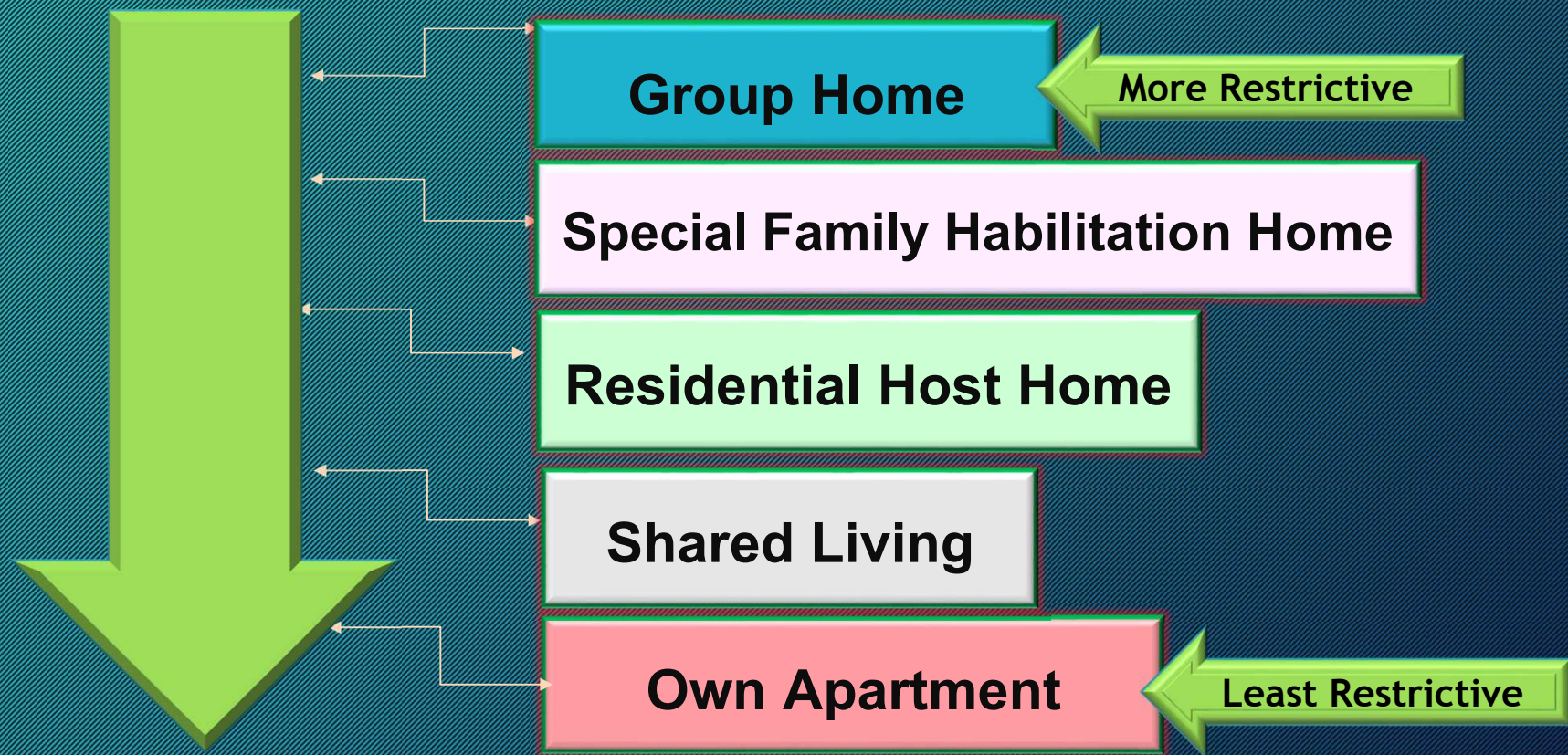
Residential Host Home

**Residential Shared
Living**

Least Restrictive

Least Restrictive Settings

42



Array of Services

Living with Family

43

In-home supports with family members

Includes the full array of waiver services designed to support the participant in the family home.

Personal Care Services

Supported Living

Homemaker

Companion

Respite

Array of Services

Supported Living

44

Supported living services assist a participant to live in a home or apartment receiving individually tailored supports to assist with the acquisition, retention, or improvement in skills related to living successfully in the community.

Own Home/Apartment

With Family

Array of Services

Own Home or Apartment

45

In-home supports with family members

Includes the full array of waiver services designed to support the participant in the family home.

Supported Employment

Personal Care Services

Transportation

Homemaker

Companion

Array of Services

Own Home or Apartment

46



April 17, 2014 BHD

Supported Employment

Transportation

Homemaker

Companion

Creating a New Service Paradigm that is Built on Relationships

47

- Sustainability depends
- on how well we support families, promote independence
- and get people jobs.



April 17, 2014 BHD

Recognize the Possibilities

48



Family



Positive Outcomes for

PEOPLE

49

**Belong to
their
community**

**Have valued
roles in their
family and
community**

**Have control
of their lives**

**Have a variety
of personal
relationships**

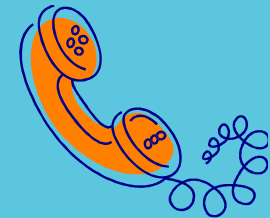
**Receive support
in a manner that
creates a
positive image**

**Have freedom
and
independence**

Questions



If you have questions regarding the training topic that was covered, please join us for the conference call to discuss this training topic on:



May 6, 1:00 – 2:00 p.m.

Call in number is 1-877-278-8686 Code 252484

Printable PowerPoint

51

<http://health.wyo.gov/ddd/CompandSupptraining.html>

The PowerPoint for this training can be found on our website under “Recorded Trainings and Supplemental Materials.”